



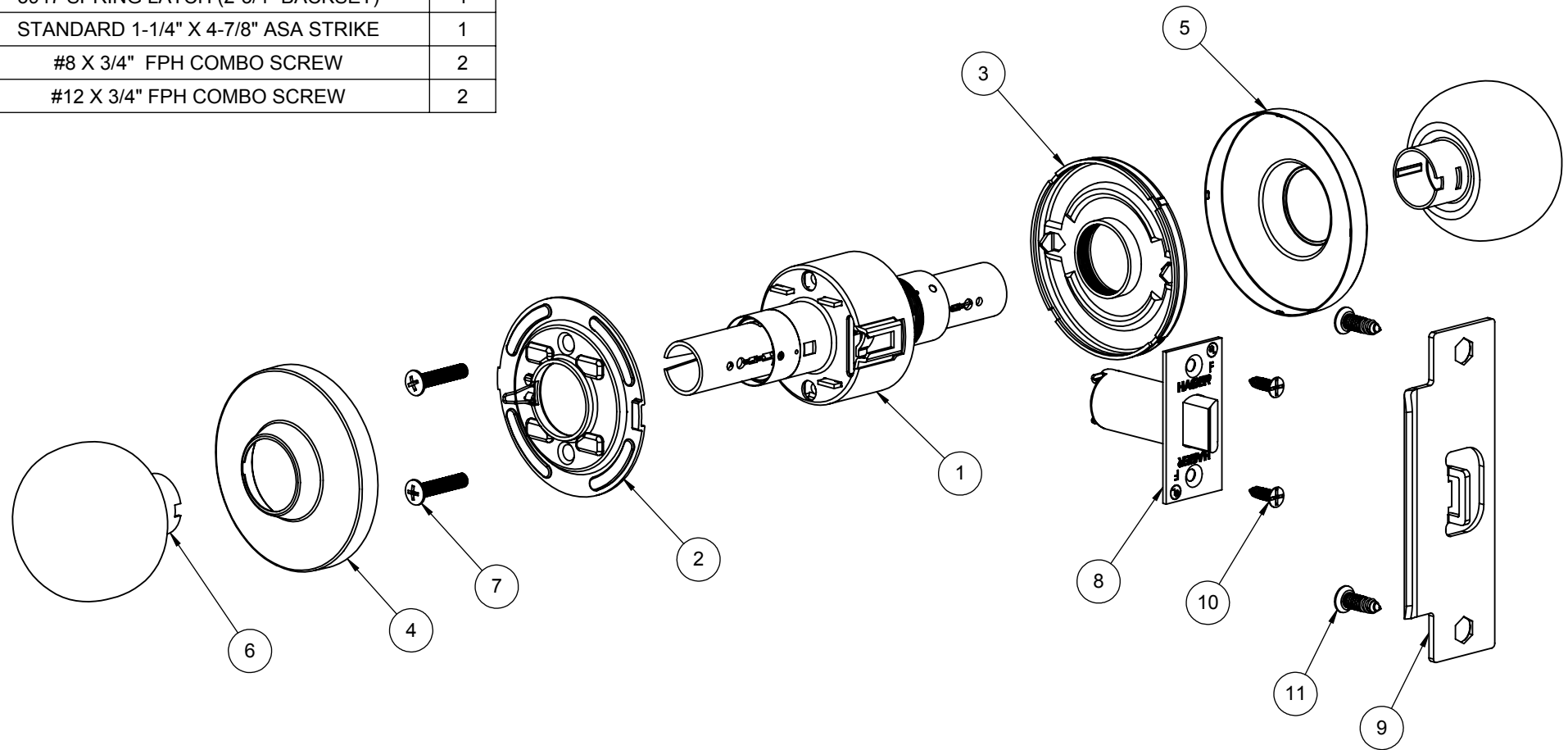
3500 Series Knob


Description: Cylindrical Locks - Grade 2 > 3500 Series Knob



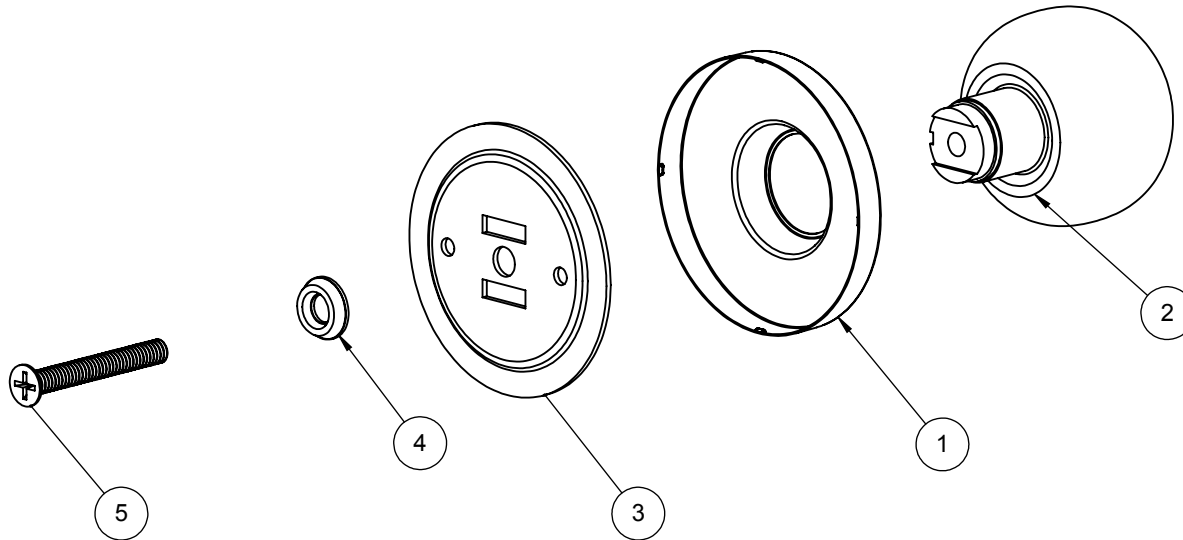
| | | | |
|----------------|--|----------------|--|
| Applications | <ul style="list-style-type: none"> - Standard Duty Commercial - Standard Door Prep - 2 1/8" Diameter (Cross Bore) - Latch Hole - 1" Diameter (Edge Bore) | Door Thickness | <ul style="list-style-type: none"> - 1 3/8" - 1 3/4" |
| Certifications | <ul style="list-style-type: none"> - BHMA Certified ANSI A156.2, Series 4000, Grade 2 - UL/cUL Listed for all functions up to 3 hours for "A" label single doors - UL10C/UBC 7-2 (1997) Positive Pressure Rated - UL10B Neutral Pressure Rated | Backset | <ul style="list-style-type: none"> - 2 3/4" - 2 3/8" - Optional |
| Knob Diameter | <ul style="list-style-type: none"> - 2-9/32" (58 mm) | Latchbolt | <ul style="list-style-type: none"> - 1/2" Throw - Stainless Steel - 2 1/4" x 1 1/8" Faceplate - Deadlocking latchbolt prevents manipulation when door is closed; keyed functions only |
| Rose Diameter | <ul style="list-style-type: none"> - 3" (76 mm) | Strikes | <ul style="list-style-type: none"> - ANSI 4-7/8" x 1-1/4" strike - standard - Optional strikes available |
| Exposed Trim | <ul style="list-style-type: none"> - Wrought Brass or Stainless Steel | Functions | <ul style="list-style-type: none"> - 53 Entry - 70 Classroom - 80 Storeroom - 40 Privacy - 10 Passage - 17 Dummy |
| Lock Chassis | <ul style="list-style-type: none"> - Heavy guage steel, zinc dichromated for corrosion resistance | Finishes | <ul style="list-style-type: none"> - US3, US32D |
| Keys | <ul style="list-style-type: none"> - Two brass keys per lock | | |
| Cylinders | <ul style="list-style-type: none"> - Brass 6-pin - Keyed Different - C Keyway - Other keying options available from the factory | | |


| ITEM NO. | FILE NUMBER | DESCRIPTION | QTY. |
|----------|--------------|-------------------------------------|------|
| 1 | S-LS00960 | KNOBSET CHASSIS - 10 FUNCTION | 1 |
| 2 | S-LS00966 | INSIDE ROSE LINER | 1 |
| 3 | S-LS00962 | OUTSIDE ROSE LINER | 1 |
| 4 | S-LS00952 | INSIDE ROSE (KNOB) | 1 |
| 5 | S-LS00952 | OUTSIDE ROSE (KNOB) | 1 |
| 6 | S-LS00953 | APOLLO PASSAGE KNOB | 2 |
| 7 | Oval Head_AM | M5x25mm OPHMS | 2 |
| 8 | S-LS00306 | 3947 SPRING LATCH (2-3/4" BACKSET) | 1 |
| 9 | S-LS00236 | STANDARD 1-1/4" X 4-7/8" ASA STRIKE | 1 |
| 10 | S-LS00882 | #8 X 3/4" FPH COMBO SCREW | 2 |
| 11 | S-LS00882 | #12 X 3/4" FPH COMBO SCREW | 2 |



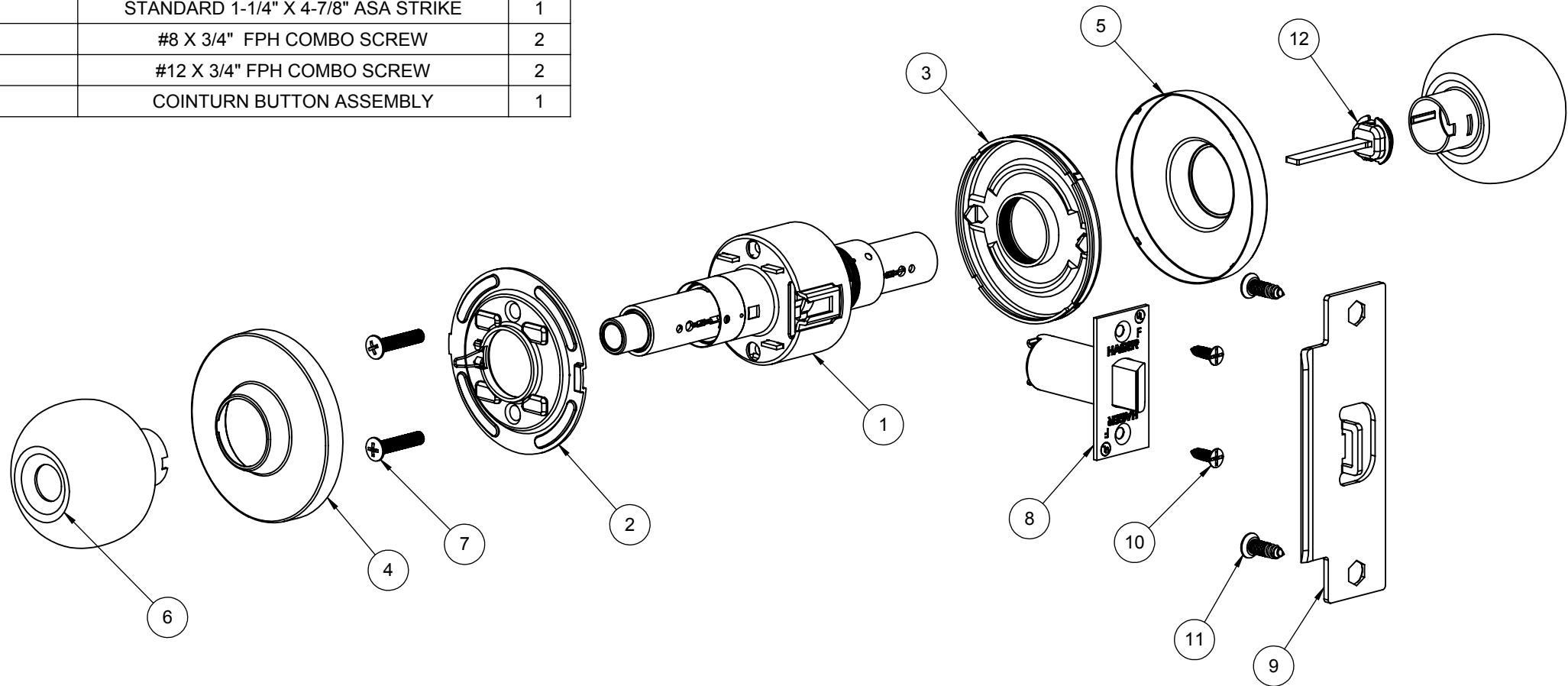
| | | | | | | | |
|---|--|------------|--------------------------|------------|---|---|--|
|  PROPRIETARY & CONFIDENTIAL THE INFORMATION CONTAINED IN THIS DRAWING IS THE SOLE PROPERTY OF HAGER COMPANIES. ANY REPRODUCTION IN PART OR AS A WHOLE WITHOUT THE WRITTEN PERMISSION OF HAGER COMPANIES IS PROHIBITED. | HAGER RESERVES THE RIGHT TO MAKE DESIGN CHANGES WITHOUT NOTICE. CALL HAGER ENGINEERING AT 1-800-325-9995 FOR THE LATEST REVISION DATE OF TEMPLATE. | DRAWN | MRJ | 11/22/2010 | 3510 GRADE 2 - PASSAGE KNOBSET | | |
| | | ENG. APPR. | - | - | | | |
| | | MATERIAL | Material <not specified> | | | Q.A. | |
| | | FINISH | - | | | TOLERANCES: FRACTIONAL: ±0.015" ANGULAR: MACH: ±1° BEND: ±1° TWO PLACE DECIMAL: ±0.01" THREE PLACE DECIMAL: ±0.004" | |
| DO NOT SCALE DRAWING | | SIZE | DWG. NO. | | REV. | | |
| | | B | S-LS01049 | | 01 | | |
| | | SCALE:1:4 | WEIGHT: 1.31 | | SHEET 1 OF 1 | | |


| ITEM NO. | FILE NUMBER | DESCRIPTION | QTY. |
|----------|------------------------|---------------------------|------|
| 1 | S-LS00952 | OUTSIDE ROSE (KNOB) | 1 |
| 2 | S-LS01058 | DUMMY KNOB ASSEMBLY | 1 |
| 3 | S-LS00444 | KNOB DUMMY MOUNTING PLATE | 1 |
| 4 | S-LS00448 | FINISH WASHER | 1 |
| 5 | Flat Head 100 Screw_AI | 1/4-20 x 2" FPHMS | 1 |



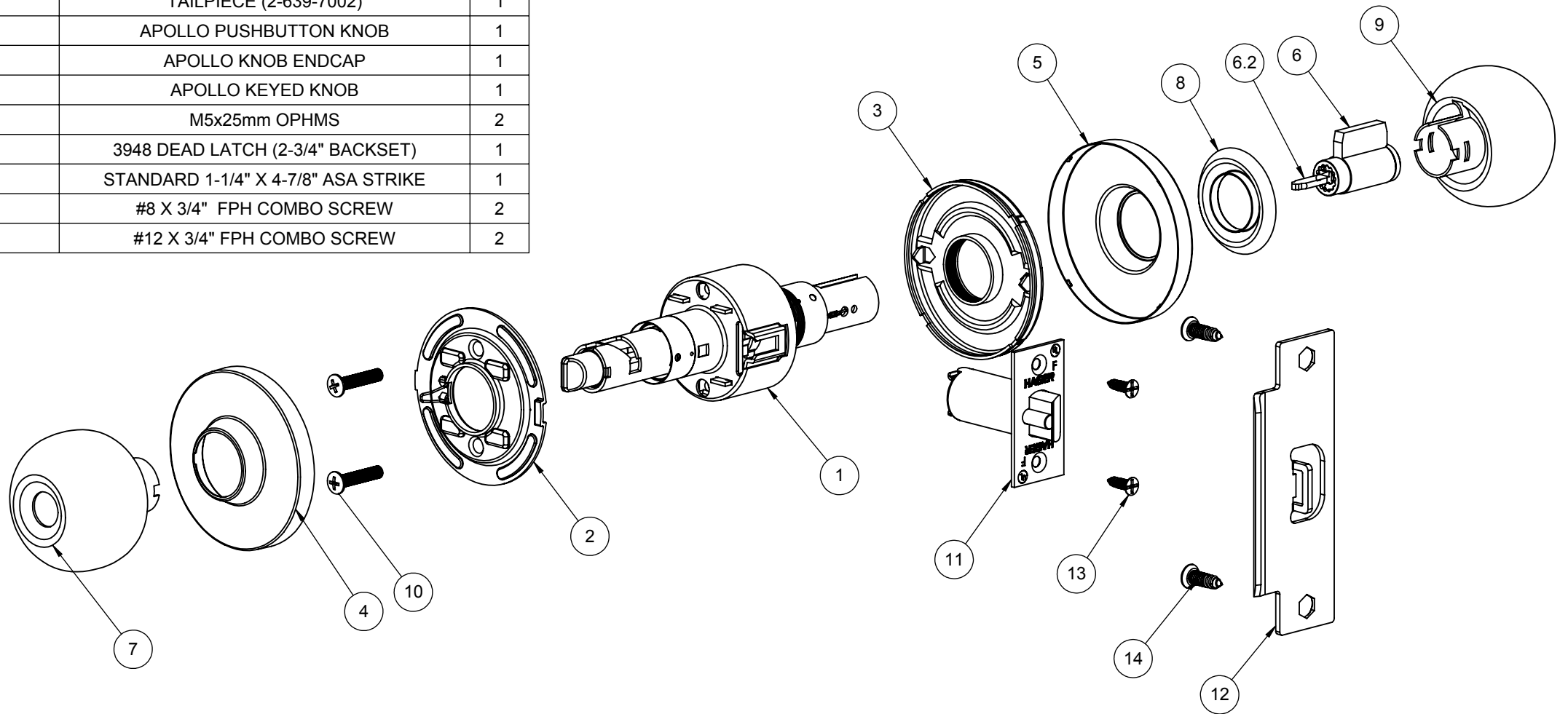
| | | | | | | | |
|---|--|----------------------|--------------------------|------------|--|--|--------------|
|  PROPRIETARY & CONFIDENTIAL THE INFORMATION CONTAINED IN THIS DRAWING IS THE SOLE PROPERTY OF HAGER COMPANIES. ANY REPRODUCTION IN PART OR AS A WHOLE WITHOUT THE WRITTEN PERMISSION OF HAGER COMPANIES IS PROHIBITED. | HAGER RESERVES THE RIGHT TO MAKE DESIGN CHANGES WITHOUT NOTICE. CALL HAGER ENGINEERING AT 1-800-325-9995 FOR THE LATEST REVISION DATE OF TEMPLATE. | DRAWN | MRJ | 11/22/2010 | 3517 GRADE 2 - DUMMY KNOBSET | | |
| | | MATERIAL | Material <not specified> | | | | ENG. APPR. |
| | | FINISH | - | | Q.A. | | |
| | | DO NOT SCALE DRAWING | | | TOLERANCES: FRACTIONAL: $\pm 0.015"$ ANGULAR: MACH: $\pm 1^\circ$ BEND: $\pm 1^\circ$ TWO PLACE DECIMAL: $\pm 0.01"$ THREE PLACE DECIMAL: $\pm 0.004"$ | | SIZE |
| | | | A | | S-LS01060 | | 02 |
| | | | SCALE: 1:4 | | WEIGHT: 0.06 | | SHEET 1 OF 1 |

| ITEM NO. | FILE NUMBER | DESCRIPTION | QTY. |
|----------|--------------|-------------------------------------|------|
| 1 | S-LS00960 | KNOBSET CHASSIS - 40 FUNCTION | 1 |
| 2 | S-LS00966 | INSIDE ROSE LINER | 1 |
| 3 | S-LS00962 | OUTSIDE ROSE LINER | 1 |
| 4 | S-LS00952 | INSIDE ROSE (KNOB) | 1 |
| 5 | S-LS00952 | OUTSIDE ROSE (KNOB) | 1 |
| 6 | S-LS00953 | APOLLO PUSHBUTTON KNOB | 2 |
| 7 | Oval Head_AM | M5x25mm OPHMS | 2 |
| 8 | S-LS00306 | 3965 SPRING LATCH (2-3/4" BACKSET) | 1 |
| 9 | S-LS00236 | STANDARD 1-1/4" X 4-7/8" ASA STRIKE | 1 |
| 10 | S-LS00882 | #8 X 3/4" FPH COMBO SCREW | 2 |
| 11 | S-LS00882 | #12 X 3/4" FPH COMBO SCREW | 2 |
| 12 | S-LS01042 | COINTURN BUTTON ASSEMBLY | 1 |




| | | | | | | | | | | |
|--|---|----------------------|--------------------------|------------|---|------------|--|--------------|------------------|-----------|
|  <p>PROPRIETARY & CONFIDENTIAL</p> <p>THE INFORMATION CONTAINED IN THIS DRAWING IS THE SOLE PROPERTY OF HAGER COMPANIES. ANY REPRODUCTION IN PART OR AS A WHOLE WITHOUT THE WRITTEN PERMISSION OF HAGER COMPANIES IS PROHIBITED.</p> | <p>HAGER RESERVES THE RIGHT TO MAKE DESIGN CHANGES WITHOUT NOTICE. CALL HAGER ENGINEERING AT 1-800-325-9995 FOR THE LATEST REVISION DATE OF TEMPLATE.</p> | MATERIAL | Material <not specified> | DRAWN | MRJ | 11/22/2010 | <p align="center">3540 GRADE 2 - PRIVACY KNOBSET</p> | | | |
| | | FINISH | - | ENG. APPR. | - | - | | | Q.A. | |
| | | DO NOT SCALE DRAWING | | | <p>TOLERANCES:</p> <p>FRACTIONAL: ±0.015"</p> <p>ANGULAR: MACH: ± 1° BEND: ±1°</p> <p>TWO PLACE DECIMAL: ±0.01"</p> <p>THREE PLACE DECIMAL: ±0.004"</p> | | | SIZE | DWG. NO. | REV. |
| | | | | | | | | B | S-LS01050 | 01 |
| | | | | | | SCALE:1:4 | WEIGHT: 1.31 | SHEET 1 OF 1 | | |

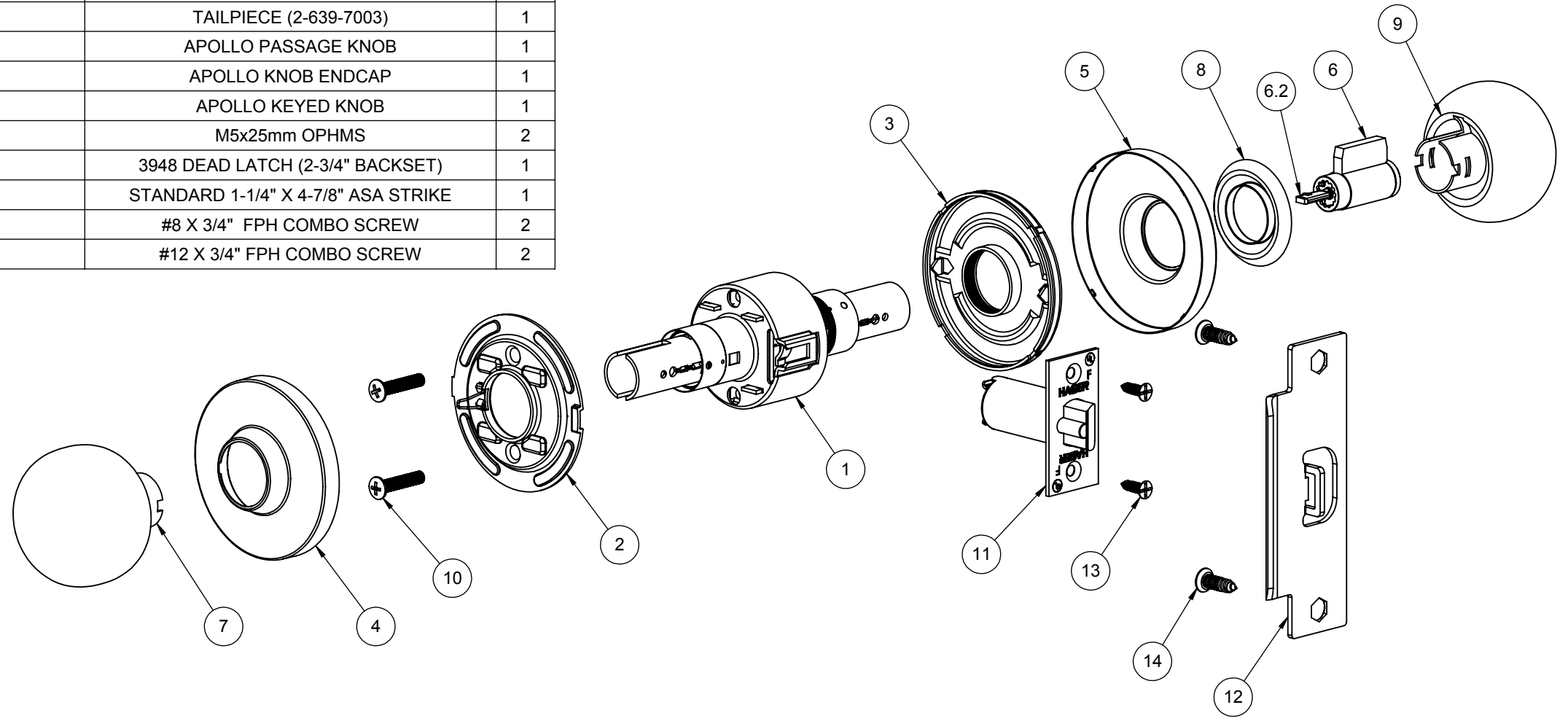
| ITEM NO. | FILE NUMBER | DESCRIPTION | QTY. |
|----------|--------------|-------------------------------------|------|
| 1 | S-LS00960 | KNOBSET CHASSIS - 53 FUNCTION | 1 |
| 2 | S-LS00966 | INSIDE ROSE LINER | 1 |
| 3 | S-LS00962 | OUTSIDE ROSE LINER | 1 |
| 4 | S-LS00952 | INSIDE ROSE (KNOB) | 1 |
| 5 | S-LS00952 | OUTSIDE ROSE (KNOB) | 1 |
| 6 | S-LS00617 | 6-PIN DRILLED CYLINDER | 1 |
| 6.2 | S-LS00214 | TAILPIECE (2-639-7002) | 1 |
| 7 | S-LS00953 | APOLLO PUSHBUTTON KNOB | 1 |
| 8 | S-LS00954 | APOLLO KNOB ENDCAP | 1 |
| 9 | S-LS00953 | APOLLO KEYED KNOB | 1 |
| 10 | Oval Head_AM | M5x25mm OPHMS | 2 |
| 11 | S-LS00306 | 3948 DEAD LATCH (2-3/4" BACKSET) | 1 |
| 12 | S-LS00236 | STANDARD 1-1/4" X 4-7/8" ASA STRIKE | 1 |
| 13 | S-LS00882 | #8 X 3/4" FPH COMBO SCREW | 2 |
| 14 | S-LS00882 | #12 X 3/4" FPH COMBO SCREW | 2 |




NOTE: (2) KEYS PROVIDED

| | | | | | | | | | | |
|---|--|----------------------|--------------------------|------------|---|------------|---|--------------|-----------|-----------|
|  PROPRIETARY & CONFIDENTIAL THE INFORMATION CONTAINED IN THIS DRAWING IS THE SOLE PROPERTY OF HAGER COMPANIES. ANY REPRODUCTION IN PART OR AS A WHOLE WITHOUT THE WRITTEN PERMISSION OF HAGER COMPANIES IS PROHIBITED. | HAGER RESERVES THE RIGHT TO MAKE DESIGN CHANGES WITHOUT NOTICE. CALL HAGER ENGINEERING AT 1-800-325-9995 FOR THE LATEST REVISION DATE OF TEMPLATE. | MATERIAL | Material <not specified> | DRAWN | MRJ | 11/22/2010 | 3553 GRADE 2 - ENTRY KNOBSET | | | |
| | | FINISH | - | ENG. APPR. | - | - | | | Q.A. | |
| | | DO NOT SCALE DRAWING | | | TOLERANCES: FRACTIONAL: ±0.015" ANGULAR: MACH: ±1° BEND: ±1° TWO PLACE DECIMAL: ±0.01" THREE PLACE DECIMAL: ±0.004" | | | SIZE | DWG. NO. | REV. |
| | | | | | | | | B | S-LS01051 | 01 |
| | | | | | | SCALE:1:4 | WEIGHT: 1.25 | SHEET 1 OF 1 | | |

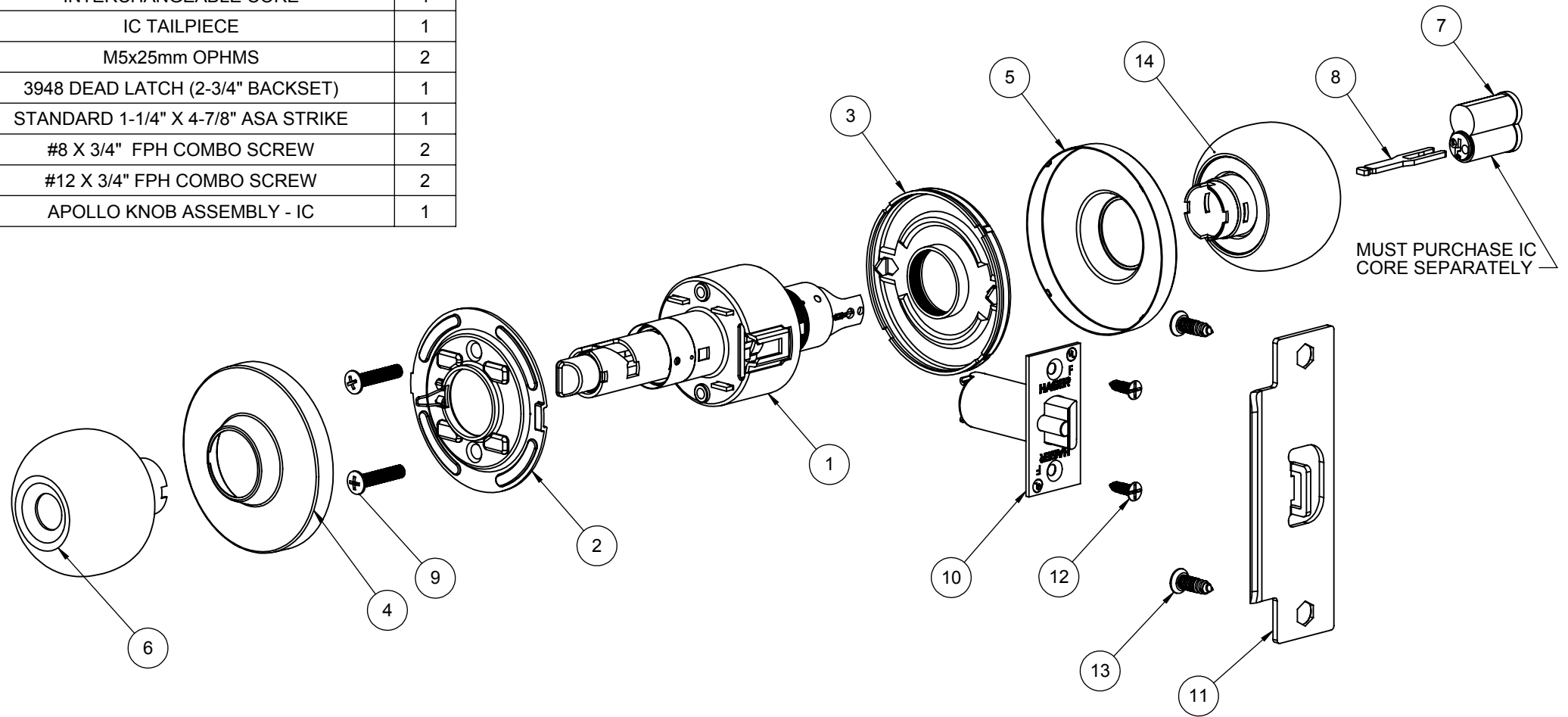
| ITEM NO. | FILE NUMBER | DESCRIPTION | QTY. |
|----------|--------------|-------------------------------------|------|
| 1 | S-LS00960 | KNOBSET CHASSIS - 70 FUNCTION | 1 |
| 2 | S-LS00966 | INSIDE ROSE LINER | 1 |
| 3 | S-LS00962 | OUTSIDE ROSE LINER | 1 |
| 4 | S-LS00952 | INSIDE ROSE (KNOB) | 1 |
| 5 | S-LS00952 | OUTSIDE ROSE (KNOB) | 1 |
| 6 | S-LS00617 | 6 PIN DRILLED CYLINDER | 1 |
| 6.2 | S-LS00215 | TAILPIECE (2-639-7003) | 1 |
| 7 | S-LS00953 | APOLLO PASSAGE KNOB | 1 |
| 8 | S-LS00954 | APOLLO KNOB ENDCAP | 1 |
| 9 | S-LS00953 | APOLLO KEYED KNOB | 1 |
| 10 | Oval Head_AM | M5x25mm OPHMS | 2 |
| 11 | S-LS00306 | 3948 DEAD LATCH (2-3/4" BACKSET) | 1 |
| 12 | S-LS00236 | STANDARD 1-1/4" X 4-7/8" ASA STRIKE | 1 |
| 13 | S-LS00882 | #8 X 3/4" FPH COMBO SCREW | 2 |
| 14 | S-LS00882 | #12 X 3/4" FPH COMBO SCREW | 2 |




NOTE: (2) KEYS PROVIDED

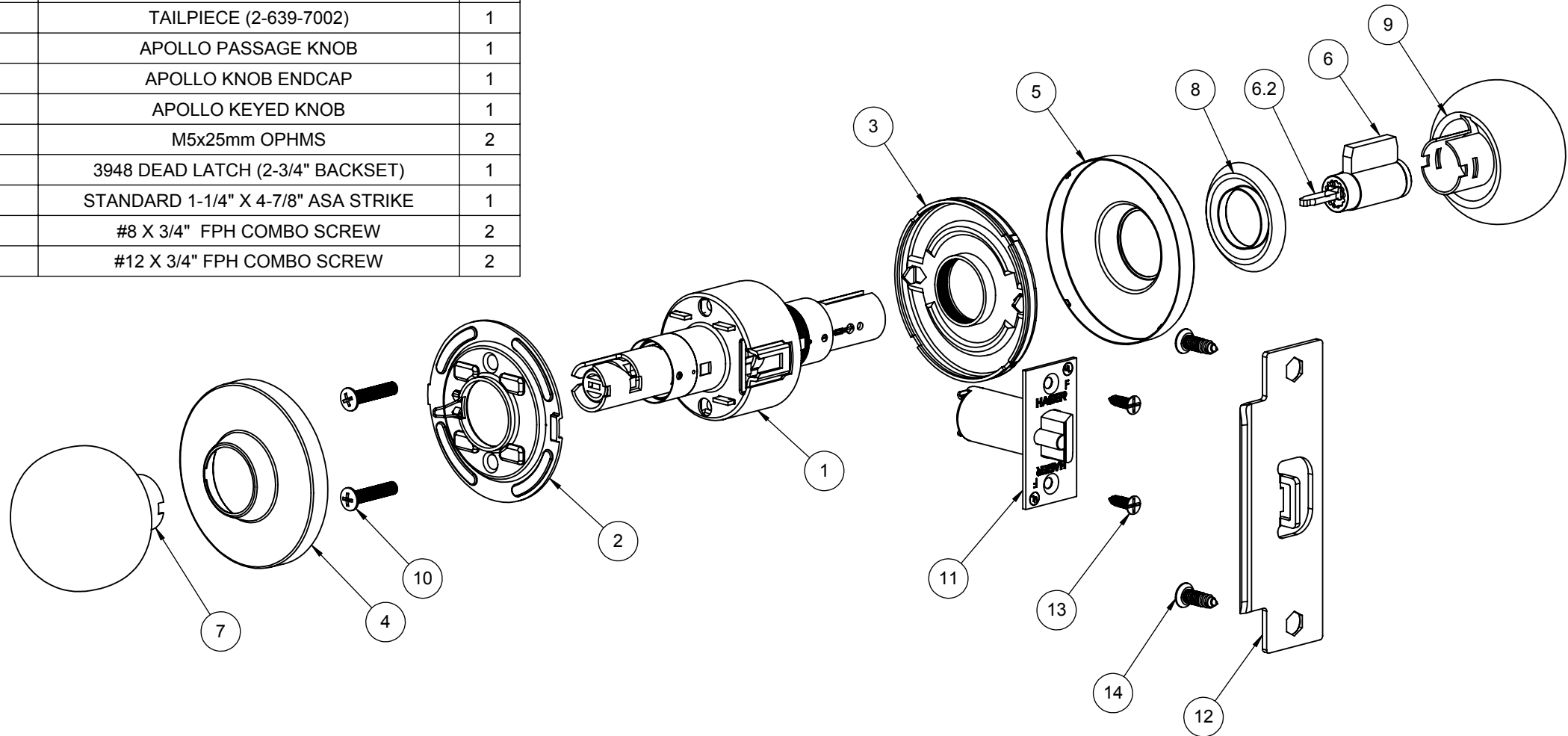
| | | | | | | | | | | |
|---|--|----------------------|--------------------------|------------|---|------------|---|--------------|------------------|-----------|
|  PROPRIETARY & CONFIDENTIAL THE INFORMATION CONTAINED IN THIS DRAWING IS THE SOLE PROPERTY OF HAGER COMPANIES. ANY REPRODUCTION IN PART OR AS A WHOLE WITHOUT THE WRITTEN PERMISSION OF HAGER COMPANIES IS PROHIBITED. | HAGER RESERVES THE RIGHT TO MAKE DESIGN CHANGES WITHOUT NOTICE. CALL HAGER ENGINEERING AT 1-800-325-9995 FOR THE LATEST REVISION DATE OF TEMPLATE. | MATERIAL | Material <not specified> | DRAWN | MRJ | 11/22/2010 | 3570 GRADE 2 - CLASSROOM KNOBSET | | | |
| | | FINISH | - | ENG. APPR. | - | - | | | Q.A. | |
| | | DO NOT SCALE DRAWING | | | TOLERANCES: FRACTIONAL: ±0.015" ANGULAR: MACH: ±1° BEND: ±1° TWO PLACE DECIMAL: ±0.01" THREE PLACE DECIMAL: ±0.004" | | | SIZE | DWG. NO. | REV. |
| | | | | | | | | B | S-LS01053 | 01 |
| | | | | | | SCALE:1:4 | WEIGHT: 1.31 | SHEET 1 OF 1 | | |

| ITEM NO. | FILE NUMBER | DESCRIPTION | QTY. |
|----------|--------------|-------------------------------------|------|
| 1 | S-LS00960 | KNOBSET CHASSIS - 53 FUNCTION - IC | 1 |
| 2 | S-LS00966 | INSIDE ROSE LINER | 1 |
| 3 | S-LS00962 | OUTSIDE ROSE LINER | 1 |
| 4 | S-LS00952 | INSIDE ROSE (KNOB) | 1 |
| 5 | S-LS00952 | OUTSIDE ROSE (KNOB) | 1 |
| 6 | S-LS00953 | APOLLO PUSHBUTTON KNOB | 1 |
| 7 | S-LS00550 | INTERCHANGEABLE CORE | 1 |
| 8 | S-LS00225 | IC TAILPIECE | 1 |
| 9 | Oval Head_AM | M5x25mm OPHMS | 2 |
| 10 | S-LS00306 | 3948 DEAD LATCH (2-3/4" BACKSET) | 1 |
| 11 | S-LS00236 | STANDARD 1-1/4" X 4-7/8" ASA STRIKE | 1 |
| 12 | S-LS00882 | #8 X 3/4" FPH COMBO SCREW | 2 |
| 13 | S-LS00882 | #12 X 3/4" FPH COMBO SCREW | 2 |
| 14 | S-LS01055 | APOLLO KNOB ASSEMBLY - IC | 1 |




| | | | | | | | |
|---|--|------------|--------------------------|------------|--|---|--|
|  PROPRIETARY & CONFIDENTIAL THE INFORMATION CONTAINED IN THIS DRAWING IS THE SOLE PROPERTY OF HAGER COMPANIES. ANY REPRODUCTION IN PART OR AS A WHOLE WITHOUT THE WRITTEN PERMISSION OF HAGER COMPANIES IS PROHIBITED. | HAGER RESERVES THE RIGHT TO MAKE DESIGN CHANGES WITHOUT NOTICE. CALL HAGER ENGINEERING AT 1-800-325-9995 FOR THE LATEST REVISION DATE OF TEMPLATE. | DRAWN | MRJ | 11/22/2010 | 3553 GRADE 2 - ENTRY KNOBSET - IC | | |
| | | ENG. APPR. | - | - | | | |
| | | MATERIAL | Material <not specified> | | | Q.A. | |
| | | FINISH | - | | | TOLERANCES: FRACTIONAL: ±0.015" ANGULAR: MACH: ±1° BEND: ±1° TWO PLACE DECIMAL: ±0.01" THREE PLACE DECIMAL: ±0.004" | |
| DO NOT SCALE DRAWING | | SIZE | DWG. NO. | | REV. | | |
| | | B | S-LS01052 | | 02 | | |
| | | SCALE:1:4 | WEIGHT: 1.28 | | SHEET 1 OF 1 | | |

| ITEM NO. | FILE NUMBER | DESCRIPTION | QTY. |
|----------|--------------|-------------------------------------|------|
| 1 | S-LS00960 | KNOBSET CHASSIS - 80 FUNCTION | 1 |
| 2 | S-LS00966 | INSIDE ROSE LINER | 1 |
| 3 | S-LS00962 | OUTSIDE ROSE LINER | 1 |
| 4 | S-LS00952 | INSIDE ROSE (KNOB) | 1 |
| 5 | S-LS00952 | OUTSIDE ROSE (KNOB) | 1 |
| 6 | S-LS00617 | 6-PIN DRILLED CYLINDER | 1 |
| 6.2 | S-LS00214 | TAILPIECE (2-639-7002) | 1 |
| 7 | S-LS00953 | APOLLO PASSAGE KNOB | 1 |
| 8 | S-LS00954 | APOLLO KNOB ENDCAP | 1 |
| 9 | S-LS00953 | APOLLO KEYED KNOB | 1 |
| 10 | Oval Head_AM | M5x25mm OPHMS | 2 |
| 11 | S-LS00306 | 3948 DEAD LATCH (2-3/4" BACKSET) | 1 |
| 12 | S-LS00236 | STANDARD 1-1/4" X 4-7/8" ASA STRIKE | 1 |
| 13 | S-LS00882 | #8 X 3/4" FPH COMBO SCREW | 2 |
| 14 | S-LS00882 | #12 X 3/4" FPH COMBO SCREW | 2 |



NOTE: (2) KEYS PROVIDED

| | | | | | | | | | | |
|---|--|----------------------|--------------------------|------------|---|------------|---|--------------|------------------|-----------|
|  PROPRIETARY & CONFIDENTIAL THE INFORMATION CONTAINED IN THIS DRAWING IS THE SOLE PROPERTY OF HAGER COMPANIES. ANY REPRODUCTION IN PART OR AS A WHOLE WITHOUT THE WRITTEN PERMISSION OF HAGER COMPANIES IS PROHIBITED. | HAGER RESERVES THE RIGHT TO MAKE DESIGN CHANGES WITHOUT NOTICE. CALL HAGER ENGINEERING AT 1-800-325-9995 FOR THE LATEST REVISION DATE OF TEMPLATE. | MATERIAL | Material <not specified> | DRAWN | MRJ | 11/22/2010 | 3580 GRADE 2 - STOREROOM KNOBSET | | | |
| | | FINISH | - | ENG. APPR. | - | - | | | Q.A. | |
| | | DO NOT SCALE DRAWING | | | TOLERANCES: FRACTIONAL: ±0.015" ANGULAR: MACH: ±1° BEND: ±1° TWO PLACE DECIMAL: ±0.01" THREE PLACE DECIMAL: ±0.004" | | | SIZE | DWG. NO. | REV. |
| | | | | | | | | B | S-LS01054 | 01 |
| | | | | | | SCALE:1:4 | WEIGHT: 1.31 | SHEET 1 OF 1 | | |



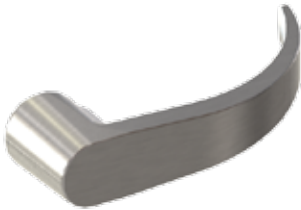
HAGER LOCKSET KNOB AND LEVER OPTIONS



APOLLO KNOB

Available on:

- 3400 Series
- 3500 Series



ARCHER LEVER

Available on:

- 3400 Series
- 3400 Series (Electrified)
- 3500 Series
- 3600 Series
- 3700 Series
- 3800 Series - Escutcheon
- 3800 Series - Sectional
- 3800 Series - Escutcheon (Electrified)
- 3800 Series - Sectional (Electrified)
- 2500 Series



AUGUST LEVER

Available on:

- 3400 Series
- 3400 Series (Electrified)
- 3500 Series
- 3600 Series
- 3700 Series
- 3800 Series - Escutcheon
- 3800 Series - Sectional
- 3800 Series - Escutcheon (Electrified)
- 3800 Series - Sectional (Electrified)



WILLIAM LEVER

Available on:

- 3800 Series - Escutcheon
- 3800 Series - Sectional
- 3800 Series - Escutcheon (Electrified)
- 3800 Series - Sectional (Electrified)



WITHNELL LEVER

Available on:

- 3400 Series
- 3400 Series (Electrified)
- 3500 Series
- 3600 Series
- 3700 Series
- 3800 Series - Escutcheon
- 3800 Series - Sectional
- 3800 Series - Escutcheon (Electrified)
- 3800 Series - Sectional (Electrified)
- 2500 Series





Hager Companies, Inc
139 Victor Street
Saint Louis, MO 63104

HAGER TEST REPORT NO.: LS04001

EVALUATION OF

**Hager Companies
3500 Series Grade 2 Knob Lockset**

TEST PARAMETERS:

This report covers tests and/or evaluations performed using the following standard(s) as a guideline:
ANSI/BHMA A156.2-1996 American National Standard for Bored and Preamsembled Locks & Latches.
Testing was conducted by Intertek Testing Services NA, Inc., at their Middleton, WI facility.

DESCRIPTION OF TEST SAMPLES:

Samples were identified as Model 3500 Grade 2 Knob Cylindrical Lockset.
Samples were received in good condition on 1/12/2004.

TEST DATES: 1/15/2004 – 2/06/2004

RESULTS: COMPLIANT

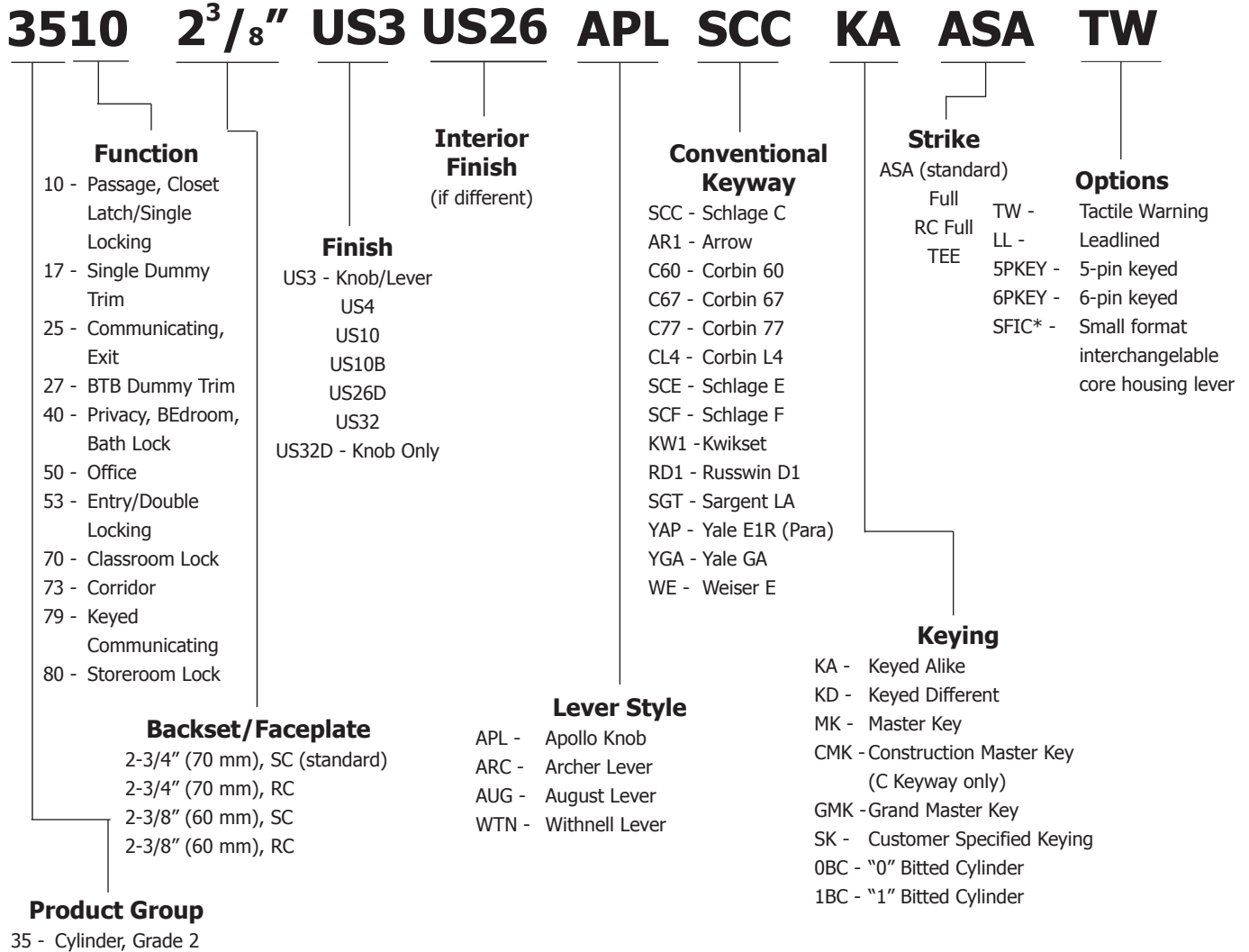
The testing results of specific subsections are summarized below.

| Subsection | Test Description | Test Results |
|-------------------|-------------------------------|---------------------|
| 9.1 | Operational Tests | Compliant |
| 9.2 | Strength Tests | Compliant |
| 9.3 | Qualification Requirements | Compliant |
| 9.4 | Cycle Tests | Compliant |
| 9.5 | Performance after Cycle Tests | Compliant |
| 9.6 | Material Evaluation Tests | Compliant |

This report summary was prepared as an account of work performed by a Third-Party Nationally Recognized Testing Laboratory. The information included in this report is certified extracts from the original test records, as contained in the permanent records of Hager Companies, Inc. Copies of the original third-party test reports are available upon request.



3500 SERIES LOCKS HOW TO ORDER



Notes:

1. If master-keyed, include master key instruction sheet with order (available in catalog or online).

* Small format interchangeable core sold separately. Available in Best Keyways only, A Standard.

Ordering example: 3553 2-3/4" SC US26D WTN NC ASA SFIC





The following products have been approved for statewide acceptance by the Florida Building Commission pursuant to Rule 9B-72.090, F.A.C., for approval of products and systems for use on Exterior Swinging Door Assemblies, in compliance with the structural requirements of the 2007 Florida Building Code. Verification of Florida Statewide acceptance can be found at www.floridabuilding.org under the Product Approval section.

Severe Windstorm Resistant Components for Swinging Door Assemblies
ANSI A250.13 - 2003 Standard

| Certified Hardware | Assembly Configuration | Door Size | Door Stiffness Class | Design Load | Florida Certification Number (FL#) |
|---------------------------------|------------------------|---------------------|----------------------|---|------------------------------------|
| 3100 Series Grade 1 Deadbolt | Single - Out Swing | 3-0 x 7-0 | - | 1150 lbf (100 psf)* | 6118 |
| | Single - Out Swing | 4-0 x 8-0 | - | 1150 lbf (70 psf)* | |
| 3200 Series Grade 2 Deadbolt | Single - Out Swing | 3-0 x 7-0 | - | 1150 lbf (100 psf)* | 6118 |
| | Single - Out Swing | 4-0 x 8-0 | - | 1150 lbf (70 psf)* | |
| 3400 Series Grade 1 Lockset | Single - Out Swing | 3-0 x 7-0 | - | 1150 lbf (100 psf)* | 6118 |
| | Single - Out Swing | 4-0 x 8-0 | - | 1150 lbf (70 psf)* | |
| 3500 Series Grade 2 Lockset | Single - Out Swing | 3-0 x 7-0 | - | 860 lbf (80 psf)* | 7683 |
| | Single - Out Swing | 4-0 x 8-0 | - | 860 lbf (50 psf)* | |
| 3800 Series Grade 1 Mortise | Single - Out Swing | 3-0 x 7-0 | - | 1150 lbf (100 psf)* | 12932 |
| | Single - Out Swing | 4-0 x 8-0 | - | 1150 lbf (70 psf)* | |
| 4500 Rim Exit Device | Single - Out Swing | 4-0 x 8-0 max. | I | +/- 70 psf 350 ft-lbs Impact | 9481 |
| 4500 SVR Exit Device | Out Swing | 8-0 x 8-0 pair max. | I | +/- 50 psf 350 ft-lbs Impact | 13178 |
| 4700 Rim Exit Device | Single - Out Swing | 4-0 x 8-0 max. | I | +/- 40 psf 350 ft-lbs Impact | 8293 |
| 780-112 Roton Hinge | Single Swing | 4-0 x 8-0 max. | I | 1150 lbf (72 psf)* 350 ft-lbs Impact | 6118 |
| BB1191 Hinge | Single - Out Swing | - | - | 1780 lbf** | 6118 |

* Load in parenthesis indicates the equivalent load in pounds per square foot based on indicated door size and door stiffness (if applicable). This load is based on the hardware item taking half of the force applied to the door assembly by the wind load and the hinges taking the other half.

** This load indicates the design load for a single butt hinge. Maximum wind load should be calculated based on door size, number of hinges used, and the other available door hardware on the door assembly.