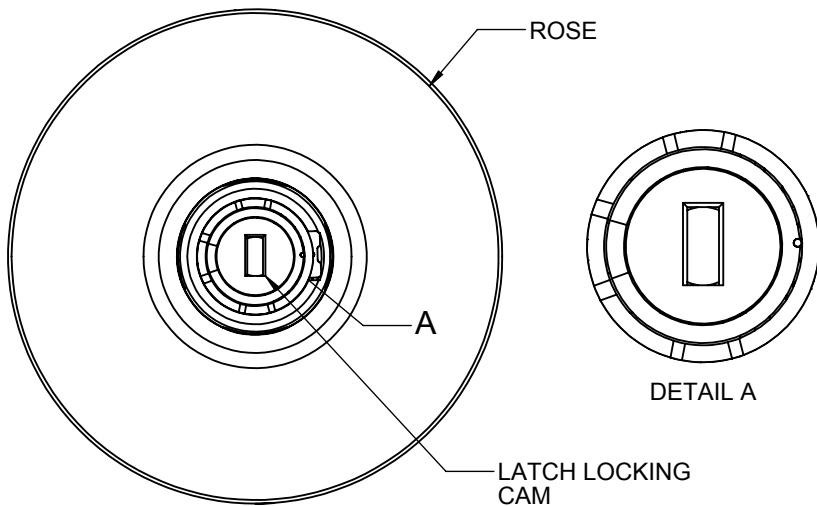


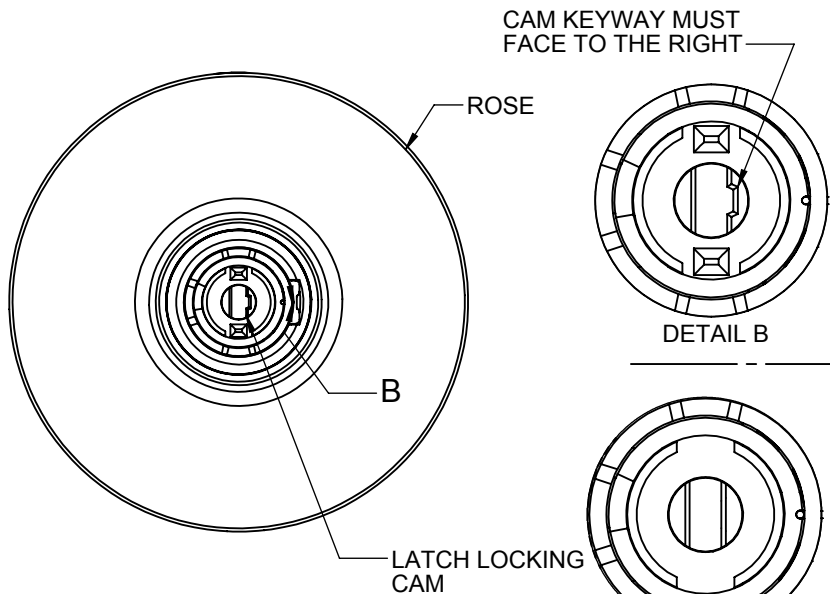
3470/3473/3495/3570/3573/3579/3670 LEVERSET TIMING INSTRUCTIONS

3670 LEVERSET



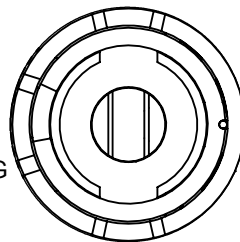
1. USING A SCREWDRIVER, ROTATE THE CAM CLOCKWISE UNTIL IT STOPS. IT SHOULD LOOK LIKE DETAIL "A" INSIDE THE LOCKBODY.
2. INSERT THE KEY INTO THE CYLINDER AND ROTATE THE TAILPIECE 90 DEGREES CLOCKWISE.
3. MAKING SURE THAT THE TAILPIECE ALIGNS WITH THE LOCKING CAM, INSTALL THE LEVER ONTO THE LOCKBODY SHAFT UNTIL THE LEVER SNAPS INTO PLACE.

3470/3570/3473/3573/3579 LEVERSET



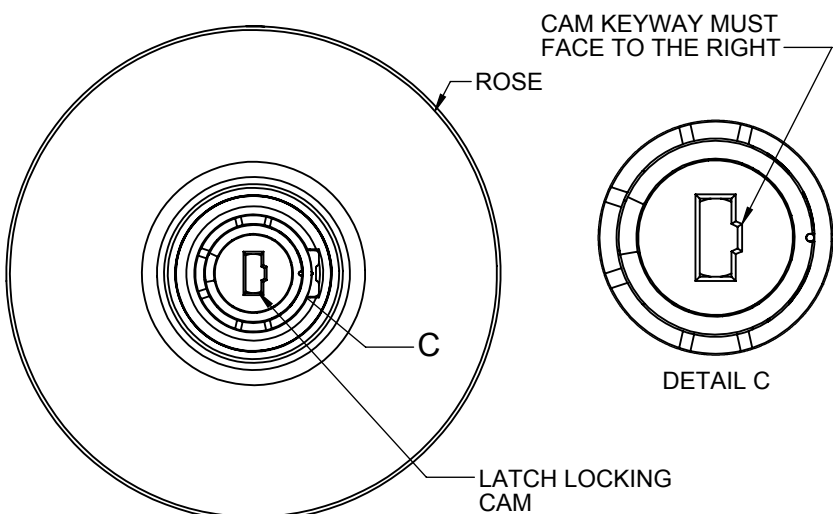
1. USING A SCREWDRIVER, ROTATE THE CAM UNTIL THE KEYWAY FACES TO THE RIGHT AS SHOWN IN DETAIL "B".
2. INSERT THE KEY INTO THE CYLINDER AND ROTATE THE TAILPIECE 90 DEGREES.
3. MAKING SURE THAT THE TAILPIECE ALIGNS WITH THE LOCKING CAM, INSTALL THE LEVER ONTO THE LOCKBODY SHAFT UNTIL IT SNAPS INTO PLACE.

NOTE: USE THE FOLLOWING INSTRUCTIONS ONLY IF THE LOCKING CAM LOOKS LIKE THE PICTURE TO THE LEFT.



1. USING A SCREWDRIVER, ROTATE THE CAM CLOCKWISE UNTIL IT STOPS. ROTATE THE CAM BACK THE OTHER DIRECTION UNTIL IT LOOKS LIKE THE PICTURE TO THE LEFT.
2. INSERT THE KEY INTO THE CYLINDER AND ROTATE THE TAILPIECE CLOCKWISE 90 DEGREES.
3. INSTALL THE LEVER ONTO THE LOCKBODY SHAFT UNTIL IT SNAPS INTO PLACE.

3495 LEVERSET

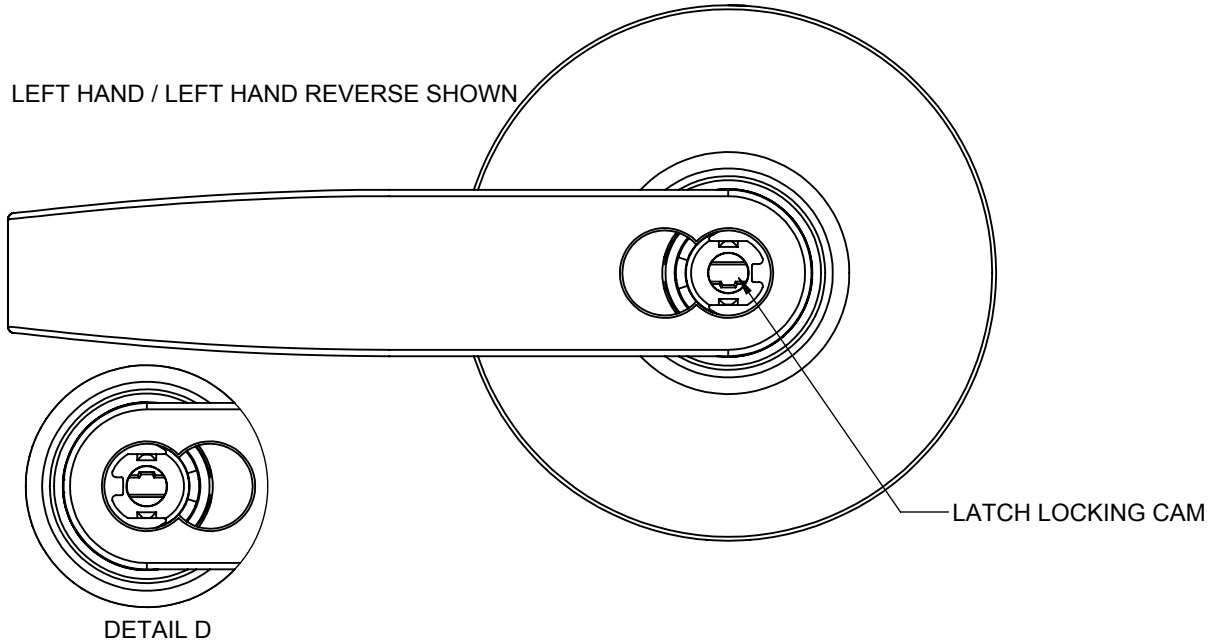


1. **INSIDE LEVER** - USING A SCREWDRIVER, ROTATE THE CAM UNTIL THE KEYWAY FACES TO THE RIGHT AS SHOWN IN DETAIL "C".
2. **OUTSIDE LEVER** - USING A SCREWDRIVER, ROTATE THE CAM UNTIL THE KEYWAY FACES TO THE RIGHT AS SHOWN IN DETAIL "C".
3. INSERT THE KEY INTO THE INSIDE CYLINDER AND ROTATE THE TAILPIECE 90 DEGREES TO MATCH CAM PROFILE. INSERT LEVER UNTIL IT SNAPS INTO PLACE.
4. INSERT THE KEY INTO THE OUTSIDE CYLINDER AND ROTATE THE TAILPIECE 90 DEGREES TO MATCH THE CAM PROFILE. INSTALL THE LEVER UNTIL IT SNAPS INTO PLACE.

3570/3573/3579 IC LEVERSET TIMING INSTRUCTIONS

3570/3573/3579 (UPDATED DESIGN) IC LEVERSET

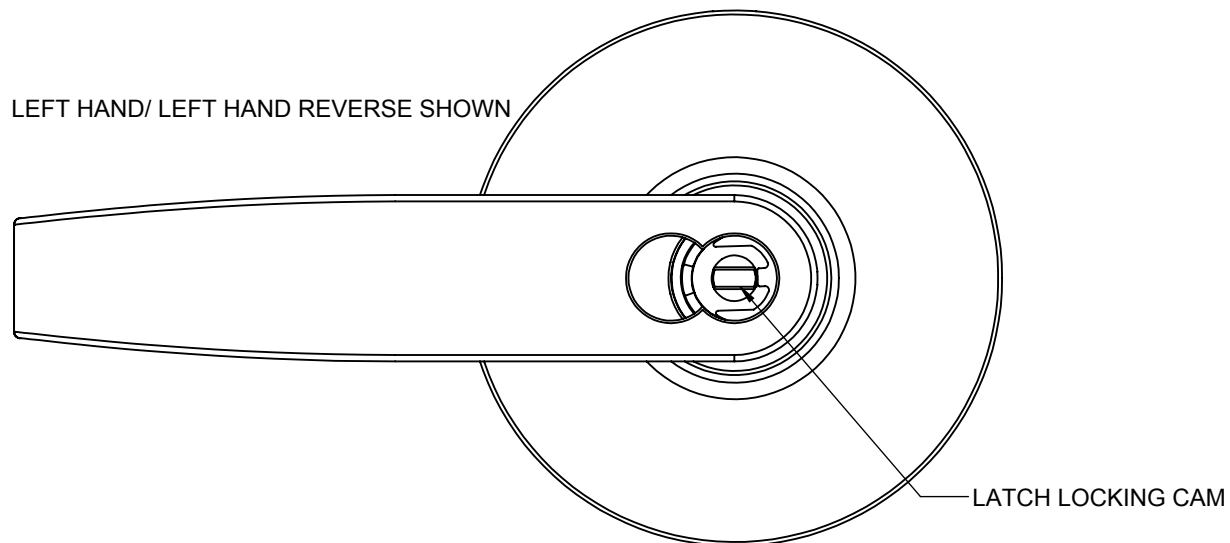
LEFT HAND / LEFT HAND REVERSE SHOWN



1. **LEFT HAND & LEFT HAND REVERSE MOUNTING** - USE A SCREWDRIVER TO ROTATE THE CAM COUNTER-CLOCKWISE UNTIL IT STOPS. ROTATE THE CAM BACK THE OTHER DIRECTION UNTIL IT LOOKS LIKE THE PICTURE ABOVE.
RIGHT HAND & RIGHT HAND REVERSE MOUNTING - USE A SCREWDRIVER TO ROTATE THE CAM CLOCKWISE UNTIL IT STOPS. ROTATE THE CAM BACK THE OTHER DIRECTION UNTIL IT LOOKS LIKE THE PICTURE IN DETAIL "D".
2. INSERT THE PACKAGED TAILPIECE INTO THE IC CORE CYLINDER.
3. INSERT THE IC CORE CYLINDER INTO THE LOCKSET LEVER UNTIL IT SITS FLUSH.
4. REMOVE THE CONTROL KEY

3570/3579 (OLD DESIGN) IC LEVERSET

LEFT HAND/ LEFT HAND REVERSE SHOWN



1. **LEFT HAND & LEFT HAND REVERSE MOUNTING** - USE A SCREWDRIVER TO ROTATE THE CAM COUNTER-CLOCKWISE UNTIL IT STOPS. ROTATE THE CAM BACK THE OTHER DIRECTION UNTIL IT LOOKS LIKE THE PICTURE ABOVE.
RIGHT HAND & RIGHT HAND REVERSE MOUNTING - USE A SCREWDRIVER TO ROTATE THE CAM CLOCKWISE UNTIL IT STOPS. ROTATE THE CAM BACK THE OTHER DIRECTION UNTIL IT LOOKS LIKE THE PICTURE ABOVE.
2. INSERT THE PACKAGED TAILPIECE INTO THE IC CORE CYLINDER.
3. INSERT THE IC CORE CYLINDER INTO THE LOCKSET LEVER UNTIL IT SITS FLUSH.
4. REMOVE THE CONTROL KEY