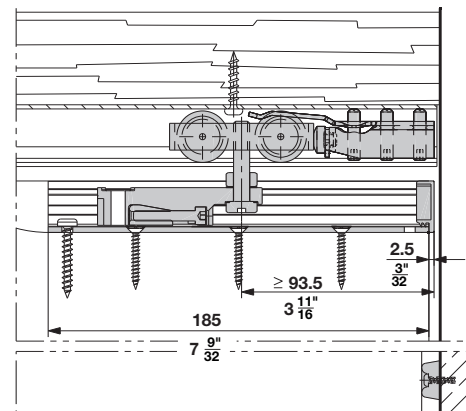
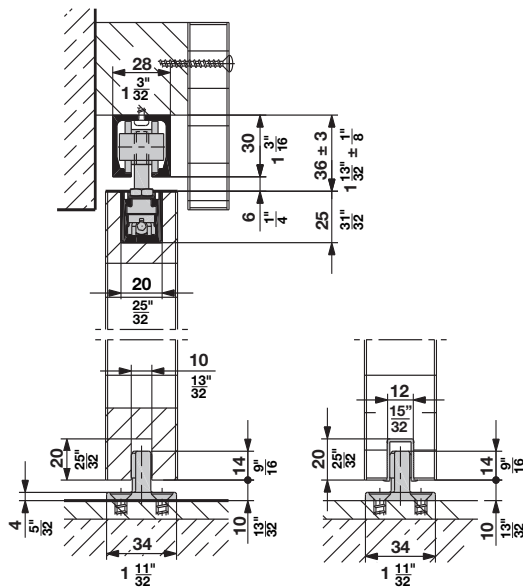
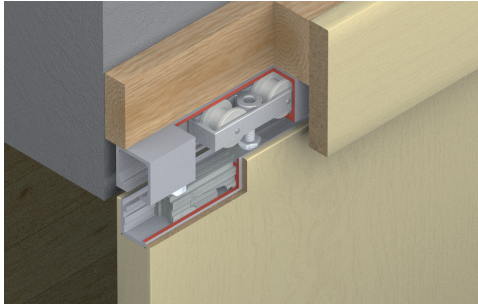


## Top Hung System

### HAWA-Junior 40/B

- For 1 and 2 sliding wood doors
- Minimum installation height
- Outstanding durability
- Rattle-free bottom guide
- Suspension with carrier profile
- Smooth quiet operation
- Heights adjustable
- Door stop with adjustable retention spring
- Maximum door weight: **40 kg** (88 lbs.)
- Minimum door thickness: **25 mm** (1")



Dimensions in mm are exact  
Inches are approximate