

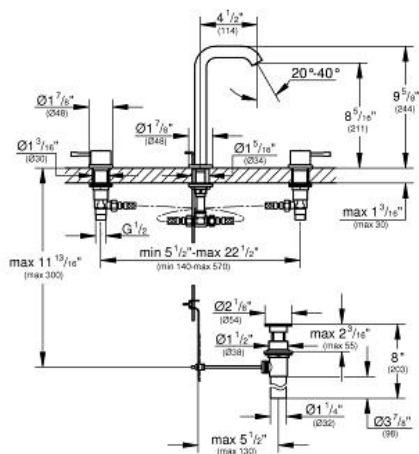
# ESSENCE NEW

MODEL # 20431

Pure Freude an Wasser

**GROHE**

GROHE America, Inc | 200 North Gary Avenue, Suite G, Roselle, IL 60172  
Phone: +1 (800) 444-7643 | Fax: +1 (800) 225-2778 | us-customerservice@grohe.com



## ADA

### Product Description:

#### Standard Specification:

- Metal lever
- 1/2" ceramic cartridges (90° turn)
- GROHE StarLight® finish
- GROHE EcoJoy®
- GROHE QuickFix® rapid installation system
- 1 1/4" pop-up waste set
- Pressure resistant flexible connection hoses (between spout and side valves)
- 1/2" x 7/16" union nut

#### Applicable Codes & Standards:

- Energy Policy Act of 1992
- NSF 61
- ASME A112.18.1/CSA B125.1
- US Federal and State material regulations
- EPA WaterSense®
- ICC/ANSI A117.1

#### Color:

- 20431 001 chrome
- 20431 EN1 brushed nickel