

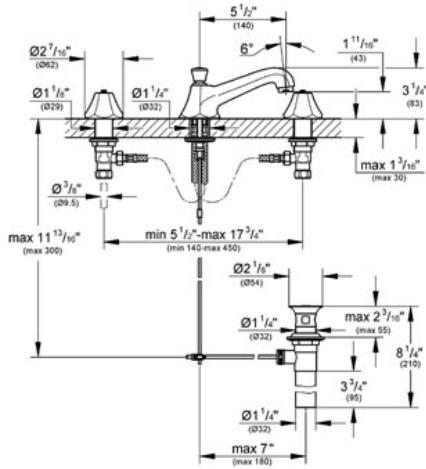
SOMERSET Three-hole basin mixer 1/2"

MODEL # 20133

Pure Freude an Wasser



GROHE America, Inc | 200 North Gary Avenue, Suite G, Roselle, IL 60172
Phone: +1 (800) 444-7643 | Fax: +1 (800) 225-2778 | us-customerservice@grohe.com



Product Description: Three-hole basin mixer 1/2"

Standard Specification:

- GROHE StarLight® finish
- Flow control
- Side valves
- 3/4" ceramic cartridges (90° turn)
- 1 1/4" pop-up waste set
- Pressure resistant flexible connection hoses (between spout and side valves)
- Handles sold separately
- Lever Handles 18 172 000 & 18 172 EN0 (sold separately)
- Max Flow Rate 13.2 gpm (50 L/min)

Applicable Codes & Standards:

- Energy Policy Act of 1992
- NSF 61
- ASME A112.18.1/CSA B125.1
- US Federal and State material regulations
- EPA WaterSense®

Color:

- 20133 000 chrome
- 20133 EN0 Brushed Nickel

