

G-7295-LM55S

Incanto Collection

Full Pressure Balancing System - Shower with Handshower

GRAFF[®]
CUTTING EDGE DESIGN



Product Features

- 1/2" rough valve w/diverter, trim plate and handle
- 8" showerhead with 12" arm & flange
- Flow rates: showerhead ≤ 1.8 max gpm, handshower ≤ 1.5 max gpm
- Wall bracket handshower set with 59" hose
- Showerhead features no-clog, easy-clean spray nozzles
- Optional extension kit

Available Finishes

- Polished Chrome
G-7295-LM55S-PC
- Brushed Nickel
G-7295-LM55S-BNi
- Polished Nickel
G-7295-LM55S-PN
- Olive Bronze*
G-7295-LM55S-OB*
- Brushed Gold*
G-7295-LM55S-BAU*

* Special order finish- call for availability

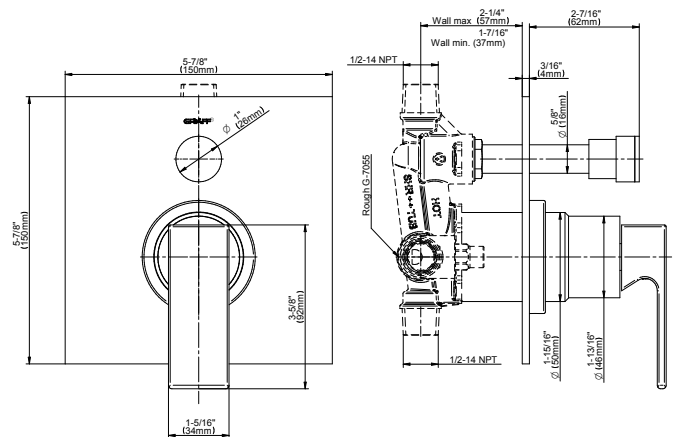
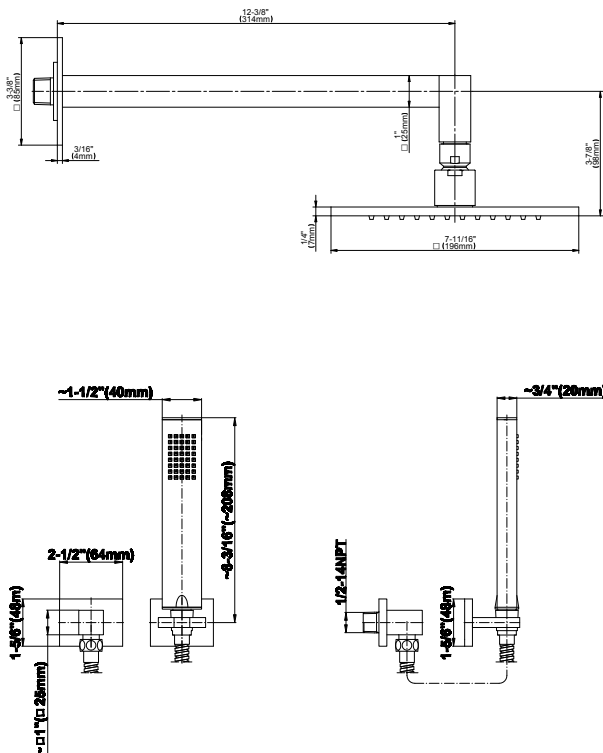
Code Compliance

- CALGreen

Warranty

- Limited lifetime warranty

For complete warranty information go to <https://www.graff-faucets.com/en/info/faqs>



The measurements shown are for reference only. Products and specifications shown are subject to change without notice. Revised 3/2018

www.graff-designs.com | phone: 800-954-4723