

K11 Soap Dispenser Installation Instructions

K11

- Hole diameter should be 1 ¼" to 1 3/8" maximum.
- Maximum deck thickness is 2"
- Basin wrench or pliers will make the installation easier
- Read entire instructions before installing

Step 1- Place the threaded part of the pump base **K11-PBA** through the escutcheon **K11-PESC** and then the black seal washer **K11-PWA**. Then insert through the hole in the top of the sink or counter top.

Note: There is no need to use plumbers putty or a sealant between the **K11-PESC** and the sink or counter top, as the seal washer **K11-PWA** will make a watertight seal.

Step 2- Install the second black seal washer **K11-PWA**, metal washer **K11-LNW** and the brass lock nut **K11-PNUT** from underneath the sink and tighten onto the threaded body of the pump base **K11-PBA**.

Step 3- Screw in the plastic bottle **K11-BOT** from underneath the sink, into the female threads of the pump base **K11-PBA**.

Step 4- Fill the plastic bottle with liquid non-abrasive dish soap, through the top hole in the pump base **K11-PBA** (just to the top of the plastic bottle **K11-BOT** to avoid overflowing when the pump head and pump is inserted).

Step 5- Insert the pump head **K11-PHB** and the metal pump **K11-PUMP** through the top hole in the pump base **K11-PBA**.

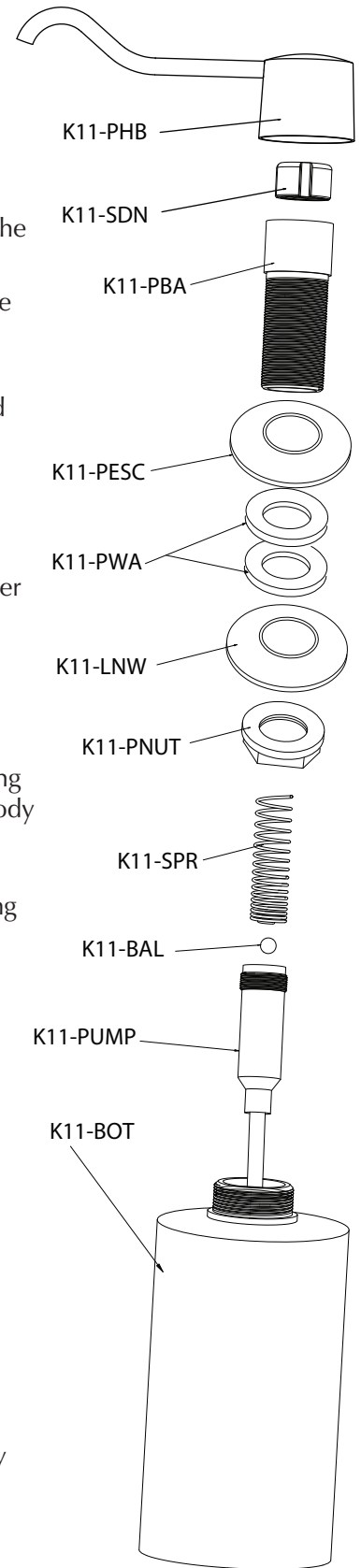
To Refill the bottle when it is empty, lift up on the pump **K11-PHB** head and remove along with the pump **K11-PUMP**. Refill bottle from the top through the hole in pump body **K11-PBA** (same as Step 4).

•**Maintenance:** If the pump **K11-PUMP** should ever clog from either the liquid soap sitting for too long as some soaps tend to coagulate, place the bottom of the pump tube in warm water and "pump" the head up and down until the water comes out freely.

- If the pump will still not clear, clean out the tube with a pipe cleaner and soak in warm water for about 15 minutes and rinse clean.

➤ **To disassemble K11-PUMP pump:**

1. Unscrew top pump locking cap **K11-SDN** underneath the pump head **K11-PHB**.
2. Remove the pump spring **K11-SPR** and the pump ball **K11-BAL** (be careful not to lose pump ball).
3. Clean pump spring, ball and the inside of the pump housing with warm water until all parts are free of soap build up.
4. Place the pump ball **K11-BAL** back inside the pump housing, followed by the small tapered end of the pump spring **K11-SPR**.
5. Attach the pump tube **K11-PUMP** back into the top pump lock nut **K11-SDN** by compressing the spring inside the cap and hand tighten the lock not.
6. After the **K11-PUMP** is attached back on the pump head **K11-PHB**, insert back through the pump base **K11-PBA**.



IMPORTANT CLEANING NOTICE

To maintain your accessories use only mild soap and water

Never use acids, harsh abrasives or detergents.

Giagni
collection

for more information call

888.560.5222 FAX 888.560.8727 Monday - Sunday 8:00am to 6:00pm EST

K11