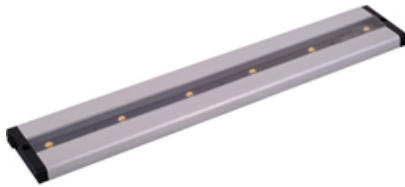




Product Specifications for E59942-AL

Job Name:	Job Type:
Quantity:	Comments:



E59942-AL

CounterMax MX-L-LPC 18" 6-Light LED Under Cabinet

MXInterLink5 technology allows for great flexibility in installation of the CounterMax MX-L-LPC series. Each item in the MX-L-LPC series is sold separately, and the MX-L-LPC under cabinet light will require additional accessories if not being used as an add-on to an existing installation. The MX-L-LPC series features a built-in dimmable driver that can be powered by a corded plug, direct-wire via a direct wire box or by being connected via a connecting cord to another unit. All accessories are sold separately and are available in black or white to better match cabinets and MX-L-LPC finish. Uses MXInterLink5 accessories. Click [here](#) for a complete list of compatible accessories.

Finish

Brushed Aluminum

Glass/Shade

Clear

Product Category

Under Cabinet

Lamping

Number of Bulb(s)	6
Light Type	LED
Bulb Type	Cree® LED
Max Bulb Wattage	2.46
Max Fixture Wattage	14.74
Rated Life	±50,000 Hours
Rated Lumens	±640
Color Temp	±3,000 K
Bulb(s) Included	Integrated
Light Up/Down	N/A
Beam Spread	N/A
CRI	N/A
Photo Cell Included	N/A
Ballast/Driver/Transformer	No
Dimmable	Lutron® or Leviton® LED Dimmer

Measurements

Width	3.00"
Height	0.55"
Length	18.00"
Extension	N/A
Back Plate Width	N/A
Back Plate Height	N/A
HCO	N/A
Min Overall Height	N/A
Max Overall Height	N/A
Hanging Weight	2.20 lb(s)
Height Adjustable	N/A
Slope	N/A
Chain Length	N/A
Wire Length	N/A
Canopy Width	N/A
Canopy Height	N/A
Canopy Length	N/A

Shipping

Carton Weight	2.80 lb(s)
Carton Width	3.94"
Carton Height	1.57"
Carton Length	19.69"
Carton Cubic Feet	N/A
Master Pack	12
Master Pack Weight	33.60 lb(s)
Master Pack Width	13.39"
Master Pack Height	7.87"
Master Pack Length	20.47"
Master Cubic Feet	N/A
UPS Shippable	Yes

Certification

Safety Rating	Dry
Energy Star	No
CA Title 24	No
CA Title 20	No
ADA	No

Other

UPC Code	845094049876
Material	N/A

Equivalents

Incandescent Watts	58.18
Fluorescent Watts	12.8

ET2 Contemporary Lighting and all designs, logos and images © 2014 ET2 Contemporary Lighting. All Rights Reserved. ET2 Contemporary Lighting reserves the right, at any time, to make changes in the design and/or construction of the product including the discontinuation of product without prior notice. Color may vary from what is pictured above due to limitations inherent to photographic processes. Always consult a qualified, licensed electrician before installation of any product weighing 35 pounds or more. We recommend that a qualified, licensed electrician do the installation. Always install to a mechanically sound structure.