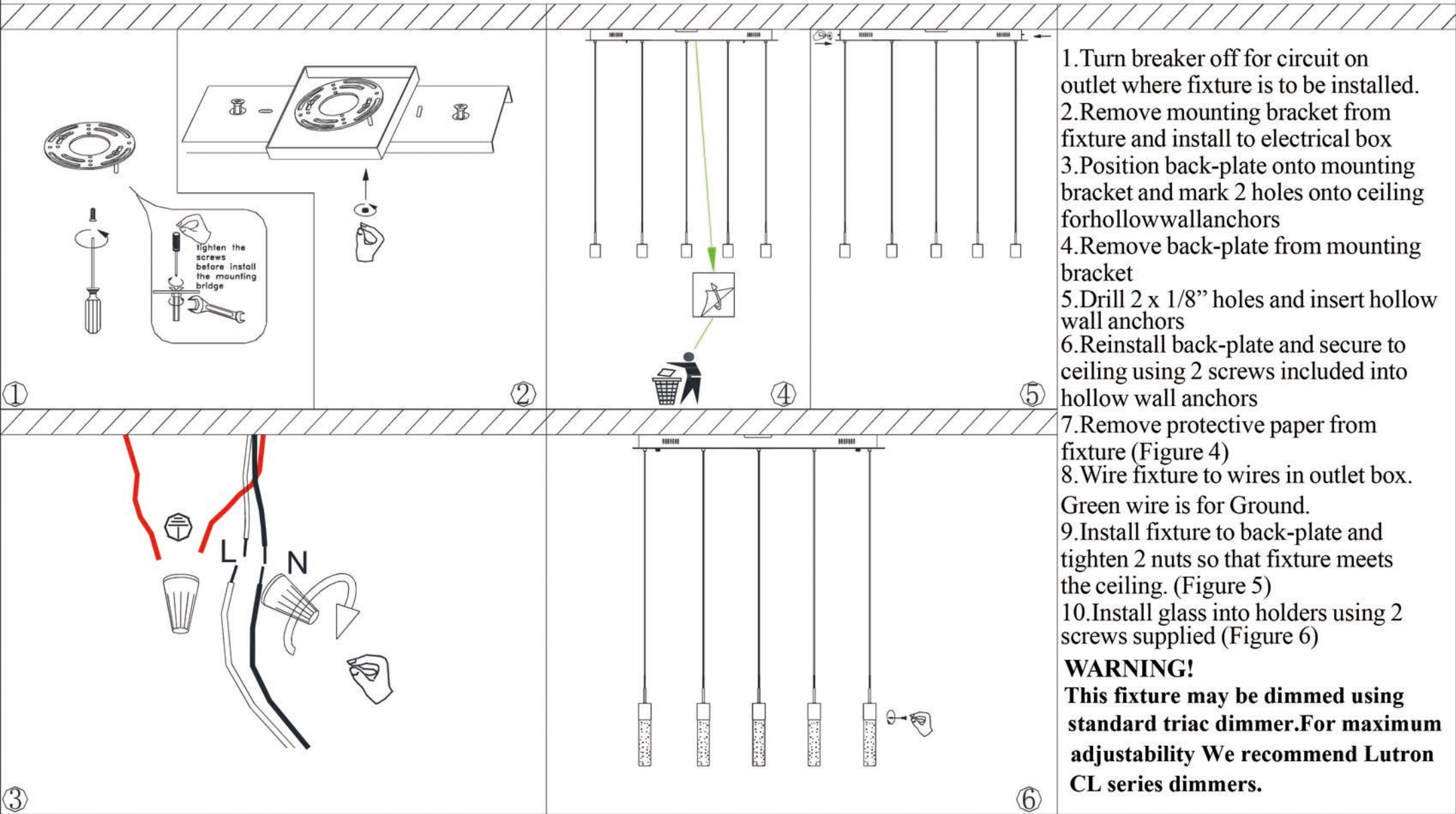




Contemporary
Lighting™

Installation Instructions

Model E22774-91PC



1. Turn breaker off for circuit on outlet where fixture is to be installed.
2. Remove mounting bracket from fixture and install to electrical box
3. Position back-plate onto mounting bracket and mark 2 holes onto ceiling for hollow wall anchors
4. Remove back-plate from mounting bracket
5. Drill 2 x 1/8" holes and insert hollow wall anchors
6. Reinstall back-plate and secure to ceiling using 2 screws included into hollow wall anchors
7. Remove protective paper from fixture (Figure 4)
8. Wire fixture to wires in outlet box. Green wire is for Ground.
9. Install fixture to back-plate and tighten 2 nuts so that fixture meets the ceiling. (Figure 5)
10. Install glass into holders using 2 screws supplied (Figure 6)

WARNING!
This fixture may be dimmed using standard triac dimmer. For maximum adjustability We recommend Lutron CL series dimmers.