

Instructions

80-82011 – Chrome
80-82011-BN – Brushed nickel

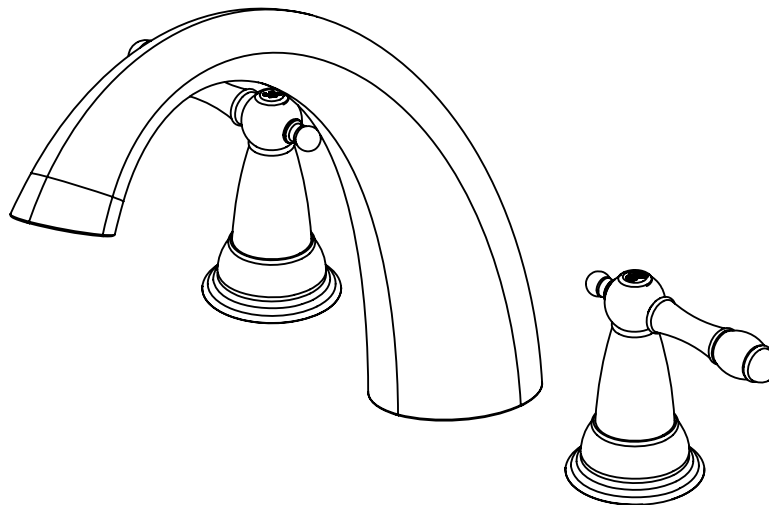


Certifications



Two Handle Roman Tub Trim Kit

Must be used with 900-RTAD Roman tub rough-in.



*Image may vary slightly from actual product

Tools Required

Adjustable Wrench
Groove Joint Pliers
Pipe Wrench
Phillips Screwdriver
Pipe Tape or pipe thread compound



Safety Tips

If you solder the joints during installation of the faucet, the seats, cartridges, and washers must be removed before using a flame or the warranty will be voided on these parts.

Protect your eyes with safety glasses when cutting or soldering water supply lines.

Cover the sink drain to avoid losing parts.

Things You May Need

Installations may vary depending on how the previous faucet was installed. Supplies necessary for the installation of your faucet are not all included; however, they are available wherever plumbing supplies are sold.

Maintenance

Your new Roman tub faucet is designed for years of trouble-free performance.

Keep it looking new by cleaning it periodically with a soft cloth. Avoid abrasive cleaners, steel wool, and harsh chemicals as these will dull the finish and void your warranty.

Important Points

Prior to beginning installation, turn off the hot and cold water lines, then turn on the old faucet to release built-up pressure. When installing your new faucet, turn the connector nuts finger tight, then use one wrench to hold the fitting and a second wrench to tighten the nut. Connections that are too tight will reduce the integrity of the system.

Wrap all threaded connections with PTFE pipe tape available at your local hardware or plumbing supply store. Always wrap in a clock-wise direction.

Contact Us

For Customer Service please call 877-319-3757, or go to homeworksww.com.

Instructions

80-82011 – Chrome
80-82011-BN – Brushed nickel

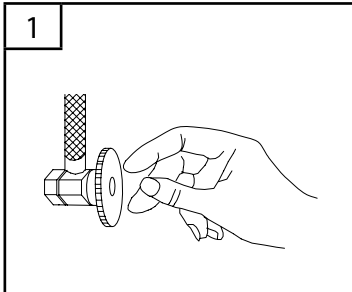


Certifications

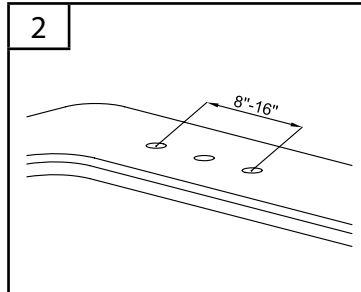


Two Handle Roman Tub Trim Kit

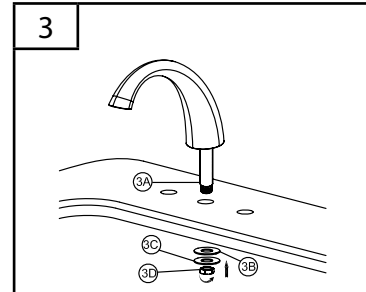
Preparation and Assembly



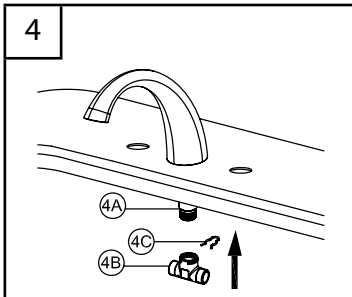
1
Locate water supply inlet and shut off water supply valve. These are usually found under the sink or near the water heater. Remove old faucet. Clean and dry sink surface area where new faucet will be mounted.



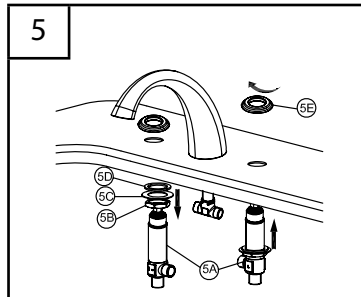
2
Drill three 1-1/2" diameter holes in finished surface. Note: Space holes according to the figure above.



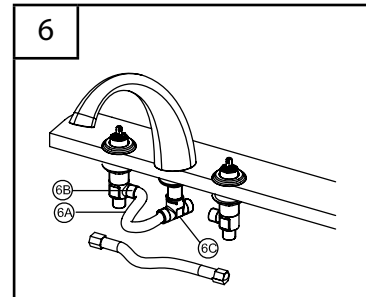
3
Insert spout shank (3A) through the center hole of the tub. Then from underneath, place rubber washer (3B) and metal washer (3C) onto the bottom of the spout body (3A) and tighten with mounting nut (3D).



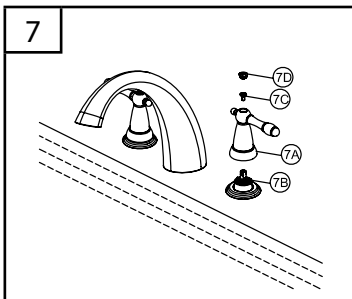
4
Thread the T-tube (4B) onto the end of the spout tube (4A) until it seats. Make sure to place washer (4C) into the T-tube (4B).



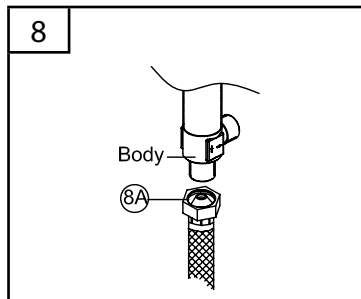
5
Place mounting nut (5B), metal washer (5C) and rubber washer (5D) onto valve body (5A). From underneath the tub, insert valve body (5A) through holes on the right (cold) side. From above, thread flange (5E) onto valve stem (5A). Tighten mounting nut (5B), so that the flange sits flush to the surface of working area. Then, insert the other valve body through hole on the left (hot) side and install in the same way.



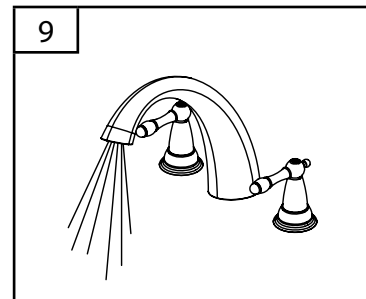
6
Connect the flexible water supply hose (6A) to the bottom of the valve bodies (6B) as shown. Align T-tube (6C) in a position which will allow maximum clearance to connect hoses. Carefully bend the hoses to fit the available space. Carefully thread the hose couplings to the side of the T-tube.



7
Place handle (7A) onto the left (hot) valve stem (7B). Place screw (7C) through the socket on the top of handle and thread until the handle is securely tightened. Attach decorative button (7D) onto the lever socket. Place the other handle assembly onto the right (cold) valve stem and install the same way.



8
Connect water supply lines (8A). Use supply lines with 1/2" IPS faucet connections.



9
Important: After installation is completed, turn on water supply and allow both hot and cold water to run for at least one minute each.

Troubleshooting

80-82011 – Chrome

80-82011-BN – Brushed nickel



Certifications



Two Handle Roman Tub Trim Kit

Troubleshooting

PROBLEM: Leaks underneath handle.

CAUSE: Bonnet has come loose or O-ring on cartridge is dirty or twisted.

ACTION:

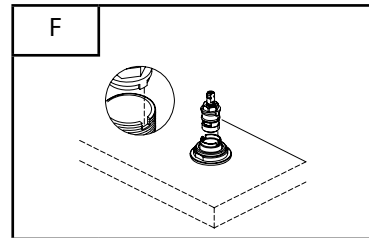
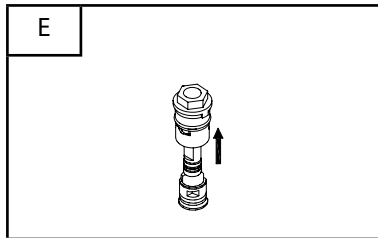
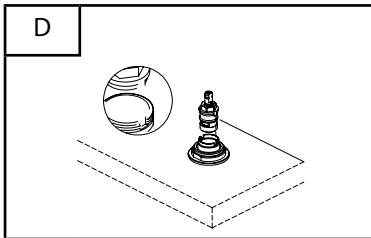
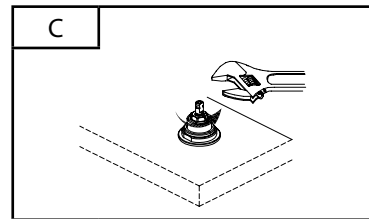
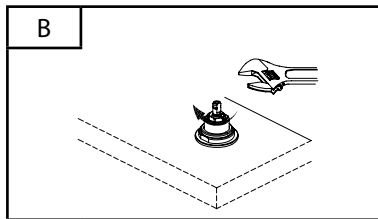
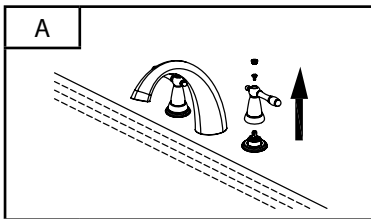
1. Move the handle to the off position. Unscrew the handle screw and remove the handle (Diagram A).
2. Tighten the bonnet by turning it clockwise (Diagram B). Move the cartridge stem to the on position. The leak should stop draining out from around the cartridge stem.
3. If the leak does not stop, shut off the water supply. Remove the bonnet by turning it counter-clockwise. Lift out the cartridge valve (Diagram C). Inspect the larger O-ring on the cartridge stem. Remove any debris from the O-rings. If either O-ring is twisted, straighten it out. If either O-ring is damaged, replace the cartridge by calling customer service.
4. Position the cartridge back into the faucet body (Diagram D). Make sure the ridges on the two sides of the cartridge bonnet fit into the grooves on the two sides of the faucet body. Tightly screw the bonnet onto the faucet body.
5. Re-install the handle.

PROBLEM: Water does not completely shut off.

CAUSE: Rubber valve seat is dirty, stuck or broken.

ACTION:

1. Shut off the cold water supply. If leak stops, the problem is on the cold side. If leak continues, the problem is on the hot side. Shut off the hot water supply to determine if both the cold and hot sides have a problem.
2. Remove the handle on the problem side. Loosen the bonnet by turning it counter-clockwise (Diagram E). Lift out the cartridge assembly.
3. Inspect the rubber valve seat in the faucet body. If there is a rubber seat is stuck tightly in the water inlet hole, push it gently with a fingertip so that it moves up and down smoothly. If the rubber seat is worn out or broken, replace the cartridge by calling customer service.
4. Replace the cartridge into the faucet body. Make sure that the ridges on the two sides of the cartridge bonnet fit into the grooves on the two sides of the faucet body (Diagram F). Tightly screw the bonnet onto the faucet body.
5. Re-install the handle.



Specifications



Certifications

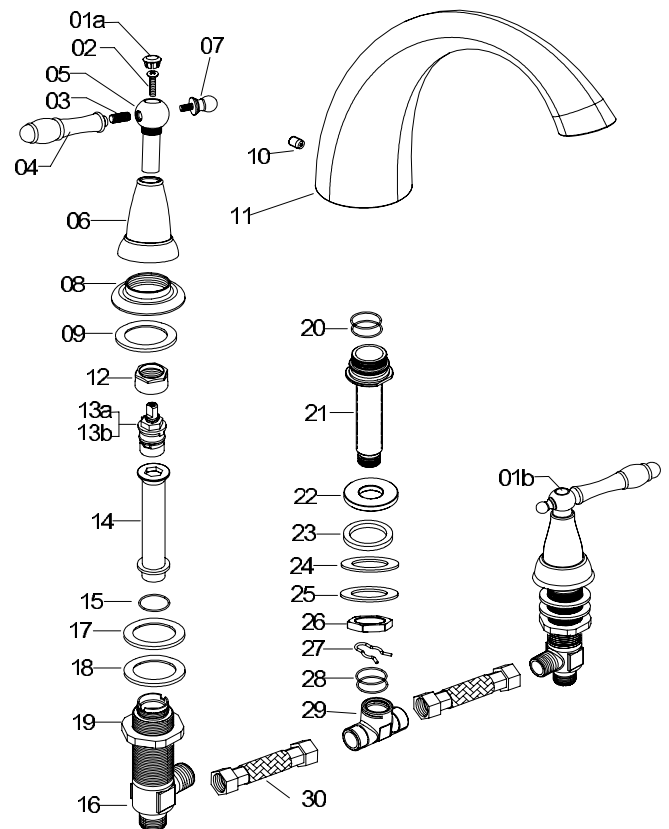


80-82011 – Chrome
80-82011-BN – Brushed nickel

Physical Characteristics

- Description: Roman tub faucet with 2 metal lever handles, 6"-12" center distance, ceramic cartridges and brass waterways
- Roman tub filler
- Decorative "J" spout
- 3-hole installation
- ASME A112.18.1/CSA B125 certified

No.	Part Description	Material
1A	Hot index	Brass C37700
1B	Cold index	Brass C37700
2	Screw	S.S.304
3	Bolt	Steel Q235A
4	Handle	ZZnA14
5	Deck ball	Zinc alloy EZDA 3#
6	Handle Seat	Zinc ZZnA14
7	Cap	ABS PA727
8	Flange	ZZnA14
9	Flange washer	EVA (DV PONT OSA)
10	Set screw	S.S.302/304
11	Spout	Brass C37700
12	Bonnet	Zinc alloy EZDA 3#
13A	Hot cartridge	Brass+POM+S.S.+H65+Silica gel+ Ceramic
13B	Cold cartridge	
14	Housing	Brass C37700
15	O-ring	EPDM E7008F
16	Housing seat	Brass C37700
17	Washer	NBR N7008F
18	Washer	Steel Q235A
19	Mounting nut	Steel Q235A
20	O-Ring	NBR N7008F
21	Long Shank	Brass C37700
22	Fixer	Brass C37700
23	Washer	EVA L-30
24	Washer	EPDM E7008F
25	Washer	Steel Q235A
26	Mounting nut	Steel Q235A
27	C-ring	S.S.304
28	O-ring	NBR N7008F/EPDM E7008F
29	T-tube	Brass C37700
30	Hose	ABS+Brass+Rubber+S.S.



Rough-In

80-82011 – Chrome
80-82011-BN – Brushed nickel



Certifications



Two Handle Roman Tub Trim Kit

