

**Traditional Gourmet Triple Bowl
18 Gauge - Type 302 - Self Rim
Model LGR-4322**



SPECIFICATIONS

GENERAL

Highest quality. Sink bowls are seamlessly drawn of #18 gauge, type 302 (18-8) nickel bearing stainless steel. Self-rimming.

DESIGN FEATURES

Bowl Depth: 10" (Left Bowl), 5-1/8" (Center), 8" (Right).
 Bowl and Faucet Deck Recessed: 3/16" below outside edge of sink.
 Finish: Exposed surfaces are hand blended to a lustrous highlighted Lasting Beauty satin finish.
 Underside: Fully protected by heavy duty Sound Guard undercoating to prevent condensation and deaden sound.

OTHER

Drain opening: 3-1/2".

This sink complies with ANSI Standard A112.19.3m.



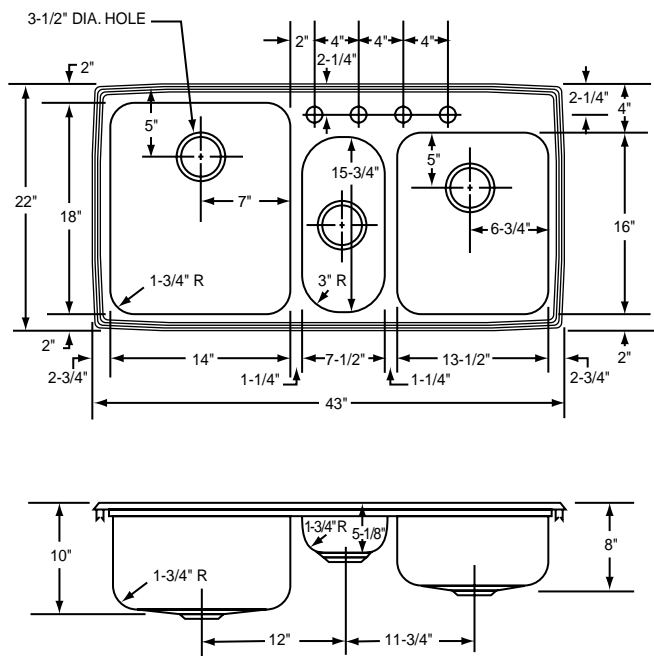
Model LGR-4322-4 Shown



This sink is listed by the International Association of Plumbing and Mechanical Officials as meeting the requirements of the Uniform Plumbing Code.

SINK DIMENSIONS

Model Number	DIMENSIONS IN INCHES												Cutout in Countertop (1 1/2" Radius Corners) L W	No. of 1 1/2" Dia. Faucet Holes 4" Center	Ship. Wt. Lbs.
	Length is left to right. Width is front to back. Inside Each Bowl														
	Overall		Left		Center			Right							
L	W	L	W	D	L	W	D	L	W	D	L	W			
LGR-4322	43	22	14	18	10	7 1/2	15 3/4	5 1/8	13 1/2	16	8	42 3/8	21 3/8	1, 2, 3, 4 or 5	33



Model LGR-4322-4 Illustrated

ALL DIMENSIONS IN INCHES. TO CONVERT TO MILLIMETERS MULTIPLY BY 25.4.

In keeping with our policy of continuing product improvement, Elkay reserves the right to change product specifications without notice.

This specification describes an Elkay product with design, quality and functional benefits to the user. When making a comparison of other producers' offerings, be certain these features are not overlooked.