

ELKAY®

SPECIFICATIONS

No Lead SwirlFlo® Drinking Fountain
Freeze Resistant – Wall Mount – Fully Exposed
Barrier-Free Access
Model EDFPB114FPK

PRODUCT SPECIFICATION

Wall-mounted drinking fountain constructed of #18 gauge, 300 series stainless steel polished to a lustrous satin finish with high shined outer edge. #16 gauge, type 304 tubular stainless steel support arm incorporates a recess to be integrated with basin.

Contoured basin minimizes splashing and has exclusive Flexi-Guard® Safety Bubbler to prevent accidental mouth injuries. Keyed in location to prevent rotation. Fully functional, vandal-resistant front push button is easy to operate. Flow regulator provides constant stream from 20 to 105 psi water pressure.

Complies with the requirements of A.D.A. (American's with Disabilities Act) when properly installed.

NO LEAD DESIGN

THIS DRINKING FOUNTAIN COMPLIES WITH THE LEAD-FREE DEFINITION IN THE SAFE DRINKING WATER ACT OF 1986 AND LEAD CONTAMINATION CONTROL ACT OF 1988.

Elkay Drinking Fountains are manufactured with a waterway system utilizing copper components and completely lead-free material. These waterways have no lead because all leaded materials, such as leaded brass, have been removed.

This fountain is certified by WQA to lead-free compliance including **NSF/ANSI 61 and 372.**



CONSTRUCTION

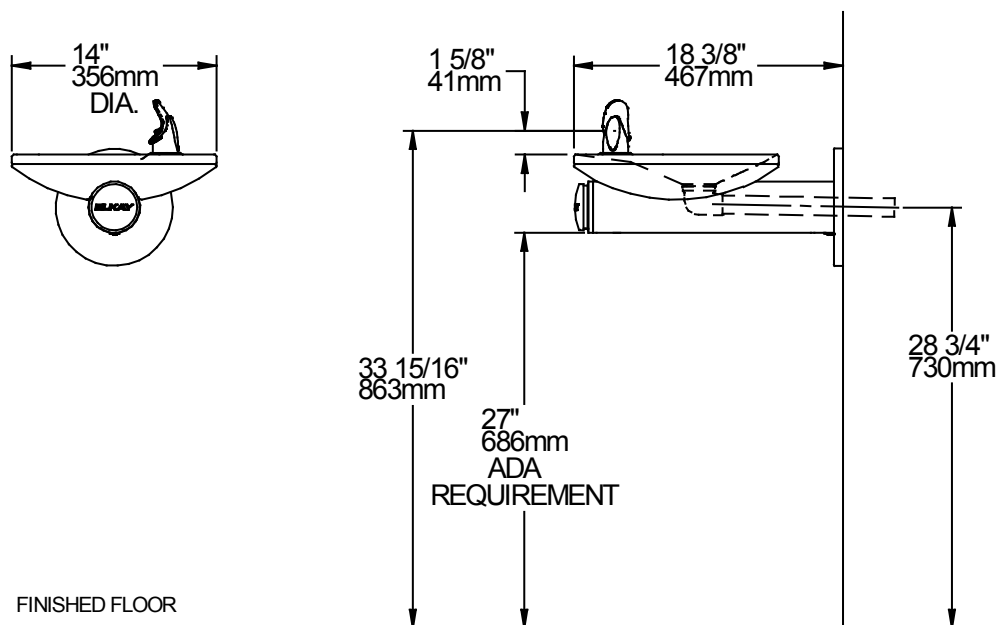
EDFPB114FPK includes the EDFPB114FP fountain and LKFRB1 freeze resistant box.

EDFPB114FP furnished complete with Flexi-Guard® Safety Bubbler and fully assembled front push button, flow regulator (20-105 psi). No trap furnished.

ACCESSORIES

MPW101 In-wall mounting plate carrier accessory.

ML100 Optional in-wall support legs for use with MPW101.



This specification describes an Elkay product with design, quality and functional benefits to the user. When making a comparison of other producer's offerings, be certain these features are not overlooked.

No Lead SwirlFlo® Drinking Fountain
Freeze Resistant – Wall Mount – Fully Exposed
Barrier-Free Access
Model EDFPB114FPK

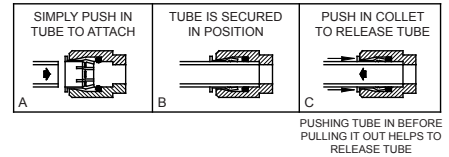
ELKAY®
ROUGH-IN DIMENSIONS

INSTALLER NOTE

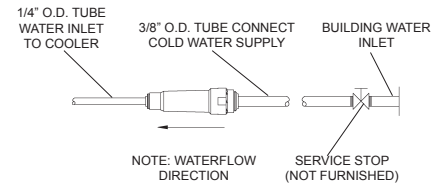
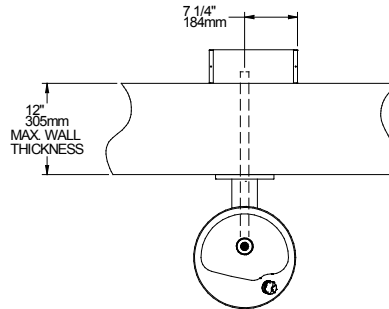
THIS DRINKING FOUNTAIN IS FURNISHED WITH A BUBBLER AND VALVE INCLUDING ALL CONNECTING FITTINGS WHICH ARE MANUFACTURED OF COMPLETELY LEAD FREE MATERIAL. SHUT OFF VALVE (NOT FURNISHED) TO ACCEPT 3/8" O.D. UNPLATED COPPER TUBE.

WARNING: The freeze-resistant box must be installed on an interior heated wall where the temperature does not drop below 50°F (10°C). The front of the box must have unobstructed air flow. Failure to maintain the interior wall temperature and the inside of the freeze-resistant box above 50°F (10°C) can result in damage to the box which could result in unrestricted water flow.

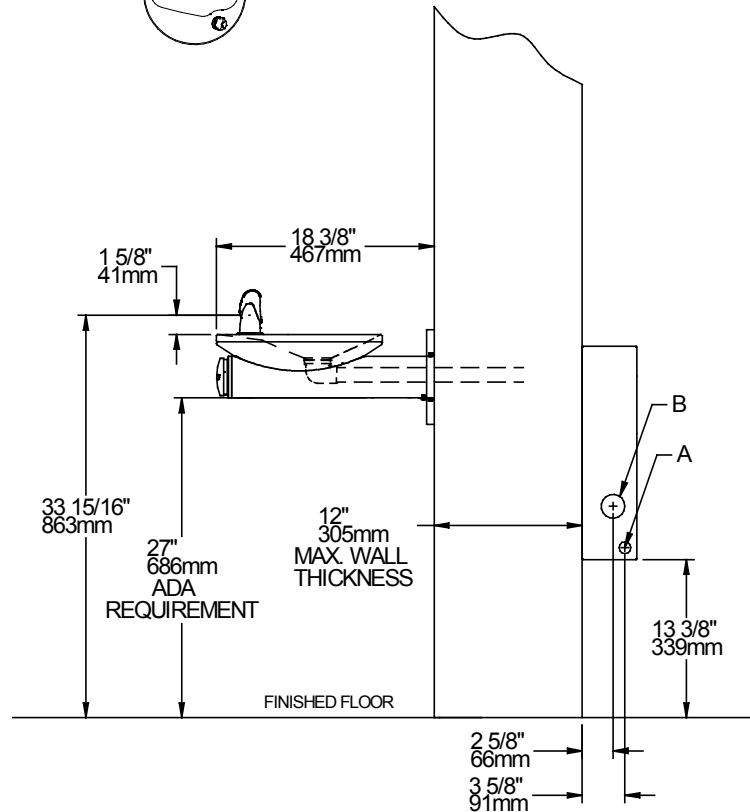
OPERATION OF QUICK CONNECT FITTINGS



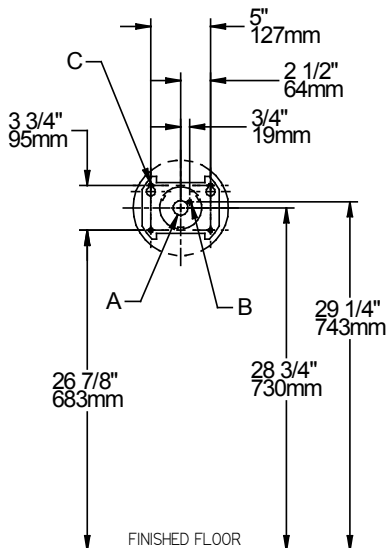
TOP VIEW



SIDE VIEW



WALL ROUGH-IN



LEGEND:

- A = Recommended water supply location 3/8" O.D. unplated copper tube connect
- B = Recommended location for waste outlet 1-1/4" O.D. drain
- C = (4) Mounting holes 3/8" (10mm) dia. for securing fountain to wall

Job Name: _____	
Model: _____	Qty. _____
Contact: _____	
Approval Signature: _____	
Notes: _____	