

SPECIFICATIONS

GENERAL

Highest quality sink seamlessly drawn of #18 gauge, type 304 (18-8) nickel bearing stainless steel.

DESIGN FEATURES

Bowl Depth: 4-3/4" [ELU(H)-9], 6" [ELU(H)-12LV, ELU(H)-12 and ELU(H)-12-FB].

Finish: Exposed surfaces are hand blended to a lustrous highlighted satin finish. ELUH models have highlighted inside top bowl radius.

Underside: Underside of sink is fully protected by heavy duty Sound Guard undercoating to prevent condensation and deaden sound.

Models ELU-12-LV and ELUH-12-LV single bowl undermount lavatory sinks include overflow assembly.

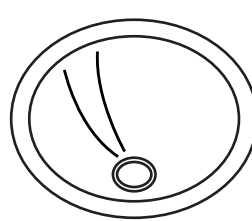
OTHER

Drain opening: 1-1/2" [ELU(H)-12LV], 2" [ELU(H)-9 and ELU(H)-12], 3-1/2" [ELUH-12-FB].

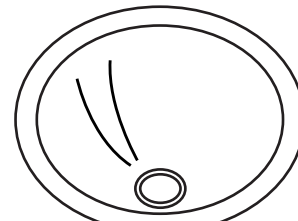
Note: All Elkay custom design undermount sinks are designed to affix easily to the underside of any solid surface countertop.

Installation: See illustrated profile below.

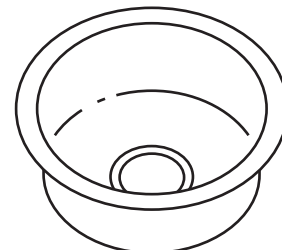
These sinks comply with ANSI Standard A112.19.3M.



Model ELU-9



Model ELU-12

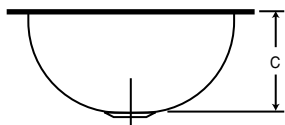
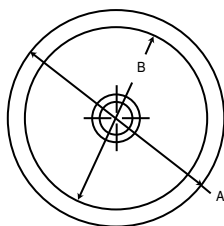


Model ELU-12-FB

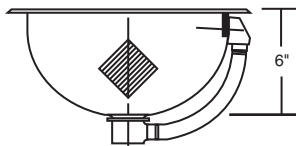
SINK DIMENSIONS

Model Number	DIMENSIONS IN INCHES			Cutout In Countertop	Ship. Wt. Lbs.	Includes Overflow Assembly
	Overall					
	Outside Diameter A	Inside Diameter B	Depth C			
ELU(H)-9	11 ³ / ₈	9	4 ³ / ₄	*See Template	3	No
ELU(H)-12	14 ³ / ₈	12	6		5	No
ELU(H)-12-FB	14 ³ / ₈	12	6		6	No
ELU(H)-12-LV	14 ³ / ₈	12	6		6 1/4	Yes

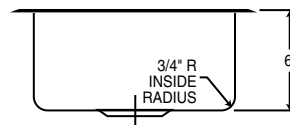
*Template and countertop mounting clips are packed with every sink.



ELU(H)-(9)(12) Illustrated



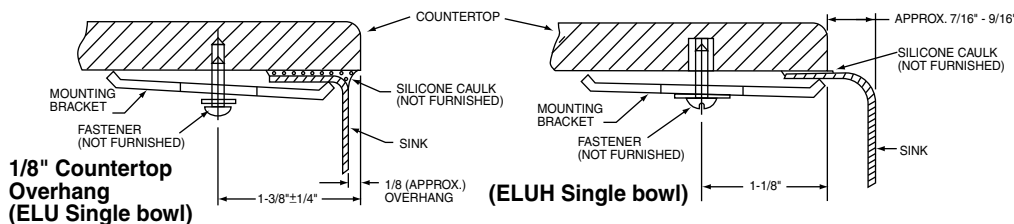
ELU(H)-12-LV Illustrated



ELU(H)-12-FB Illustrated

Installation Profile of ELU and ELUH Single Bowl Models

The template provided with each ELU/ELUH sink provides the only type of installation recommended by Elkay.



ALL DIMENSIONS IN INCHES. TO CONVERT TO MILLIMETERS MULTIPLY BY 25.4.

In keeping with our policy of continuing product improvement, Elkay reserves the right to change product specifications without notice.

This specification describes an Elkay product with design, quality and functional benefits to the user. When making a comparison of other producers' offerings, be certain these features are not overlooked.