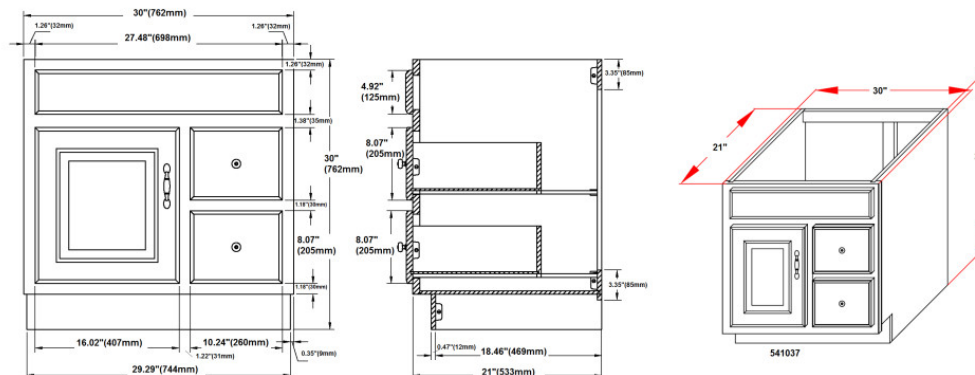


Concord Unassembled 1-Door and 2-Drawer Vanity without Top 30" White



SPECIFICATIONS

MATERIAL CONSTRUCTION:	Wood
ASSEMBLY REQUIRED:	Yes
TOOLS NEEDED FOR ASSEMBLY:	Screwdriver
ASSEMBLED DIMENSIONS:	30" H x 30" L x 21" D
ASSEMBLED WEIGHT:	45.08 lbs.
HINGE STYLE:	Concealed
DOOR STYLE:	1 Raised Panel MDF Door
DRAWER STYLE:	2 MDF Drawers
GLIDE STYLE:	STD Easy Glide
FAKE DWR STYLE:	N/A
DWR #1 DIMENSIONS:	8.35" W x 5.71" H
DWR CONSTRUCTION:	Standard
SHELF STYLE:	N/A
SHELF ADJUSTABILITY INCREMENTS:	N/A
SHELF MAX WEIGHT CAPACITY:	N/A
SHELF DIMENSIONS:	N/A
SHELF THICKNESS:	N/A
SHELF MATERIAL:	N/A

FRAME STYLE:	N/A
FACE FRAME MATERIAL:	Pine
SIDES MATERIAL:	Plywood
BOTTOM MATERIAL:	Plywood
TOE KICK INSET WIDTH:	4"
BACK PANEL MATERIAL:	N/A
BACK BRACE MATERIAL:	Plywood



WARRANTY:	1-Year limited warranty
CARB COMPLIANT:	CARB Phase 2
TITLE IV COMPLIANT:	Yes



TYPE:
JOB:
ORDER CODE:
APPROVALS: