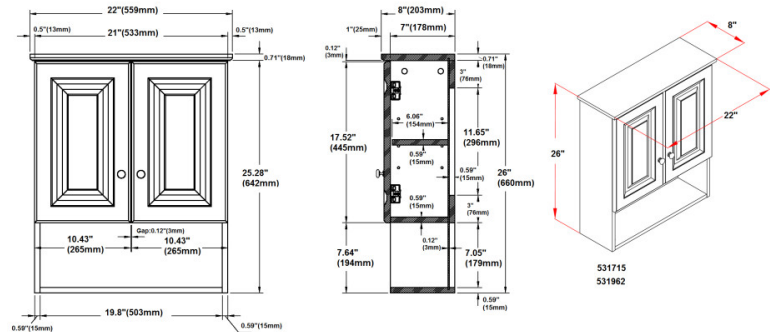


Claremont 2-Door Wall Cabinet 21" Honey Oak



SPECIFICATIONS

MATERIAL CONSTRUCTION:	Wood	FACE FRAME MATERIAL:	N/A
ASSEMBLY REQUIRED:	Yes	SIDES MATERIAL:	Particle Board
TOOLS NEEDED FOR INSTALLATION:	Electric Drill, Screwdriver	BOTTOM MATERIAL:	Particle Board
ASSEMBLED DIMENSIONS:	26" H x 22" L x 8" D	BACK PANEL MATERIAL:	MDF
WEIGHT:	29.3 lbs.	BACK BRACE MATERIAL:	Particle Board
NUMBER OF DOORS:	2	GLASS STYLE:	N/A
DOOR MATERIAL:	Oak	LIGHTED:	No
NUMBER OF SHELVES:	1	QTY OF LAMPS:	N/A
ADJUSTABLE SHELVES:	Yes	POWER SOURCE:	None
SHELF MAX WEIGHT CAPACITY:	10 lbs.	MOUNTING HARDWARE INCLUDED:	No
SHELF WIDTH:	19.8"	MOUNTING TYPE:	Wall Mount
SHELF THICKNESS:	0.59"		
SHELF MATERIAL:	Particle Board		

WARRANTY: 1-Year limited warranty
CARB COMPLIANT: CARB Phase 2
TSCA TITLE IV COMPLIANT: Yes



TYPE:
JOB:
ORDER CODE:
APPROVALS: