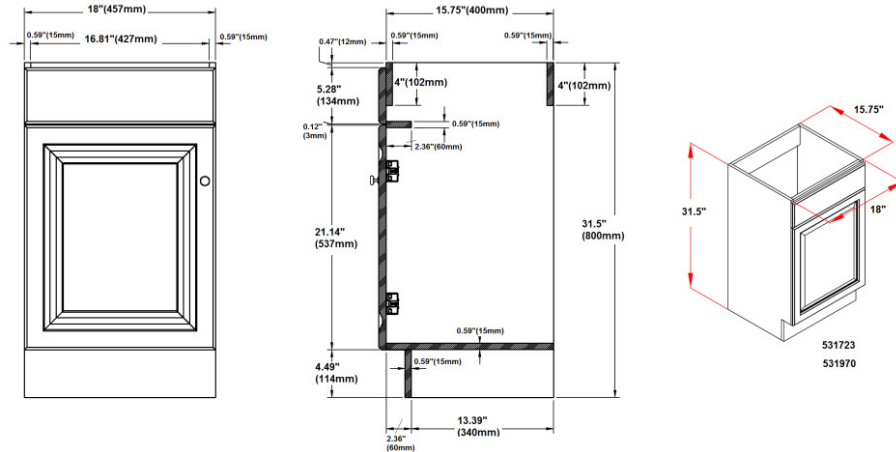


Claremont Unassembled I-Door Vanity without Top 18"  
Oak



**SPECIFICATIONS**

<b>MATERIAL CONSTRUCTION:</b>	Wood	<b>FRAME STYLE:</b>	N/A
<b>ASSEMBLY REQUIRED:</b>	Yes	<b>FACE FRAME MATERIAL:</b>	N/A
<b>TOOLS NEEDED FOR ASSEMBLY:</b>	Screwdriver	<b>SIDES MATERIAL:</b>	Particle Board
<b>ASSEMBLED DIMENSIONS:</b>	31.5" H x 18" L x 15.75" D	<b>BOTTOM MATERIAL:</b>	Particle Board
<b>ASSEMBLED WEIGHT:</b>	34.6 lbs.	<b>TOE KICK INSET WIDTH:</b>	4.5"
<b>HINGE STYLE:</b>	Concealed	<b>BACK PANEL MATERIAL:</b>	N/A
<b>DOOR STYLE:</b>	I Raised Panel Oak Door, reversible	<b>BACK BRACE MATERIAL:</b>	Particle Board
<b>DRAWER STYLE:</b>	N/A		
<b>GLIDE STYLE:</b>	N/A		
<b>FAKE DWR STYLE:</b>	N/A		
<b>DWR #1 DIMENSIONS:</b>	N/A		
<b>DWR CONSTRUCTION:</b>	N/A		
<b>SHELF STYLE:</b>	N/A		
<b>SHELF ADJUSTABILITY INCREMENTS:</b>	N/A		
<b>SHELF MAX WEIGHT CAPACITY:</b>	N/A		
<b>SHELF DIMENSIONS:</b>	N/A		
<b>SHELF THICKNESS:</b>	N/A		
<b>SHELF MATERIAL:</b>	N/A		



**WARRANTY:** 1-Year limited warranty  
**CARB COMPLIANT:** CARB Phase 2  
**TITLE IV COMPLIANT:** Yes



**TYPE:**  
**JOB:**  
**ORDER CODE:**  
**APPROVALS:**