



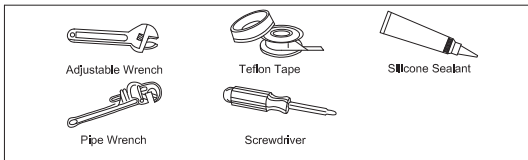
Design House is a registered brand of DHI Corp.  
Mequon, WI 53092  
1-800-558-8700

## MIDDLETON SINGLE HANDLE TUB & SHOWER FAUCET

Models 545772, 545764, 545756

Your new Design House faucet will give you years of trouble free performance. Thank you for choosing our product for your home. **Please read all of these instructions carefully before installing your new faucet.**

Helpful tools to install this faucet:



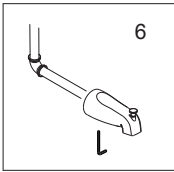
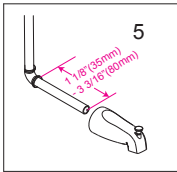
### IMPORTANT POINTS

Wrap threaded connections (except where o-ring or rubber sealant are present) with Teflon tape available from your local hardware or plumbing supply store. Always wrap in a clockwise direction.

### SAFETY TIPS

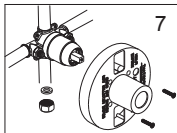
**ALWAYS** protect your eyes with safety glasses

## INSTALLATION PROCEDURE, CONTD.



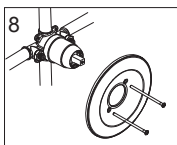
### SPOUT INSTALLATION

- Run a bead of **silicon sealer** around spout to secure to wall.
- Slip the spout onto the pipe and tighten the screw to hold spout in place.

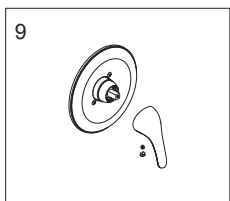


- To remove the plaster guard, loosen and remove the 2 screws. Pull the guard straight out to remove. Discard before installing escutcheon. Trim sleeve will remain in place.

7a. Place handle on valve stem and turn handle to full on mixed position. Turn on hot and cold water lines to full open for one minute each. Check for leakage. Shut off water at faucet. Remove the Handle. **REMARK:** Adjust the water temperature by adjusting the red rotational limit. Remove the rotational limit stop from the valve by sliding it off the stem. Rotate counter clockwise to increase temperature or clockwise to reduce temperature. Re-install in correct position.

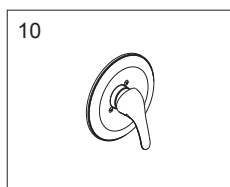


- With gasket in place, slide escutcheon over trim sleeve. Fasten escutcheon to faucet body and tighten to finished wall surface using two mounting screws.

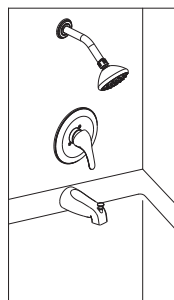


### HANDLE INSTALLATION

- Slide handle onto shaft.



- Insert screw through handle and thread to faucet body. Insert button over set screw.



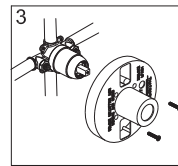
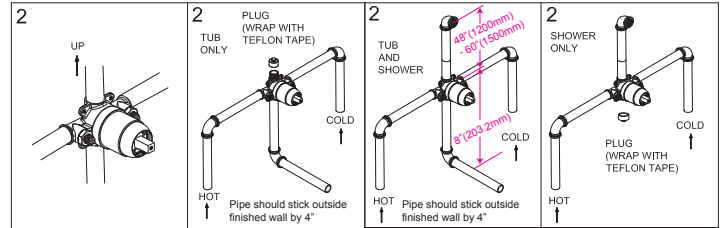
### COMPLETED INSTALLATION

## INSTALLATION PROCEDURE

- Shut off main water supply. Preparation/Assembly of recommended component locations: Valve depth should be front of valve to front of the finished wall of approx. 2-3/16" (1=7/8" - 2-1/2" max); Shower and/or spout outlet hole should be 1-1/4" diameter, and Valve access hole should be 6" diameter. Caution: Allow at least 2" between the tub outlet and tub rim.

- Connect water supply lines using 1/2" threaded pipes and 90 degree elbows. Wrap all threaded connections with Teflon tape or joint compound.

Note: water limit screw stops are preset at the factory if they are present on valve. Modification is not required.

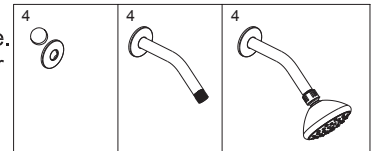


- Plaster guard is preinstalled. The front surface of the plaster guard should sit flush with the finished surface of the wall.

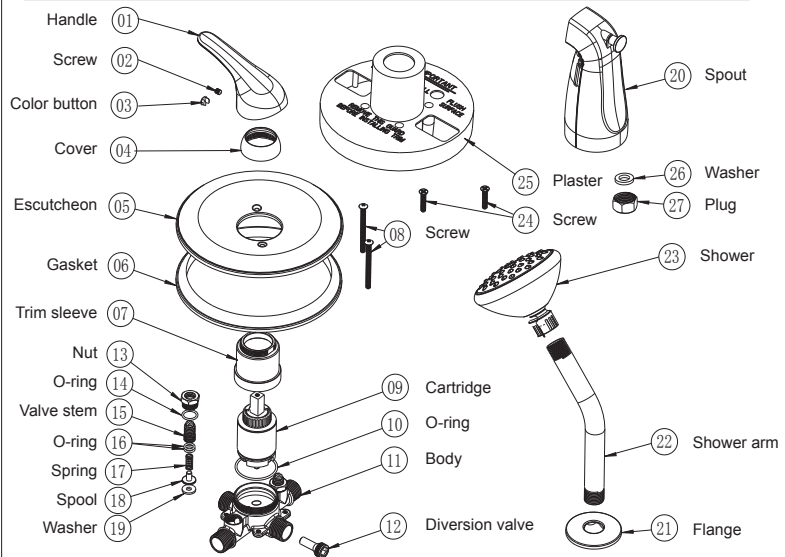
### SHOWER HEAD INSTALLATION

- Insert shower arm through wall hole and thread to appropriate line. Thread shower head onto shower arm.

**REMEMBER TO WRAP THREADED CONNECTIONS WITH TEFLON TAPE OR JOINT COMPOUND.**



## EXPLODED DIAGRAM



## MAINTENANCE

Your new Design House faucet is designed to give you years of trouble-free performance. Keep it looking new by cleaning it periodically with a soft cloth. Avoid abrasive cleaners, steel wool and harsh chemicals as these will dull the finish and void your warranty.

Brass finishes are polished, then protected with a lacquer coating to help prevent tarnishing. Clean these surfaces only with a damp, soft cloth.

### CONSUMER PROTECTION WARNING

Under the Safe Drinking Water Act, the U.S. Environmental Protection Agency restricts the amount of lead used in brass and solder. Your new faucet is made in strict compliance with all government standards. The materials used in the manufacture of this faucet are of industry standard quality and are similar to other plumbing products having brass fittings.

To reduce the amount of lead in your drinking water, allow the water to run for a moment before filling your glass and remember to always use cold water for drinking purposes.