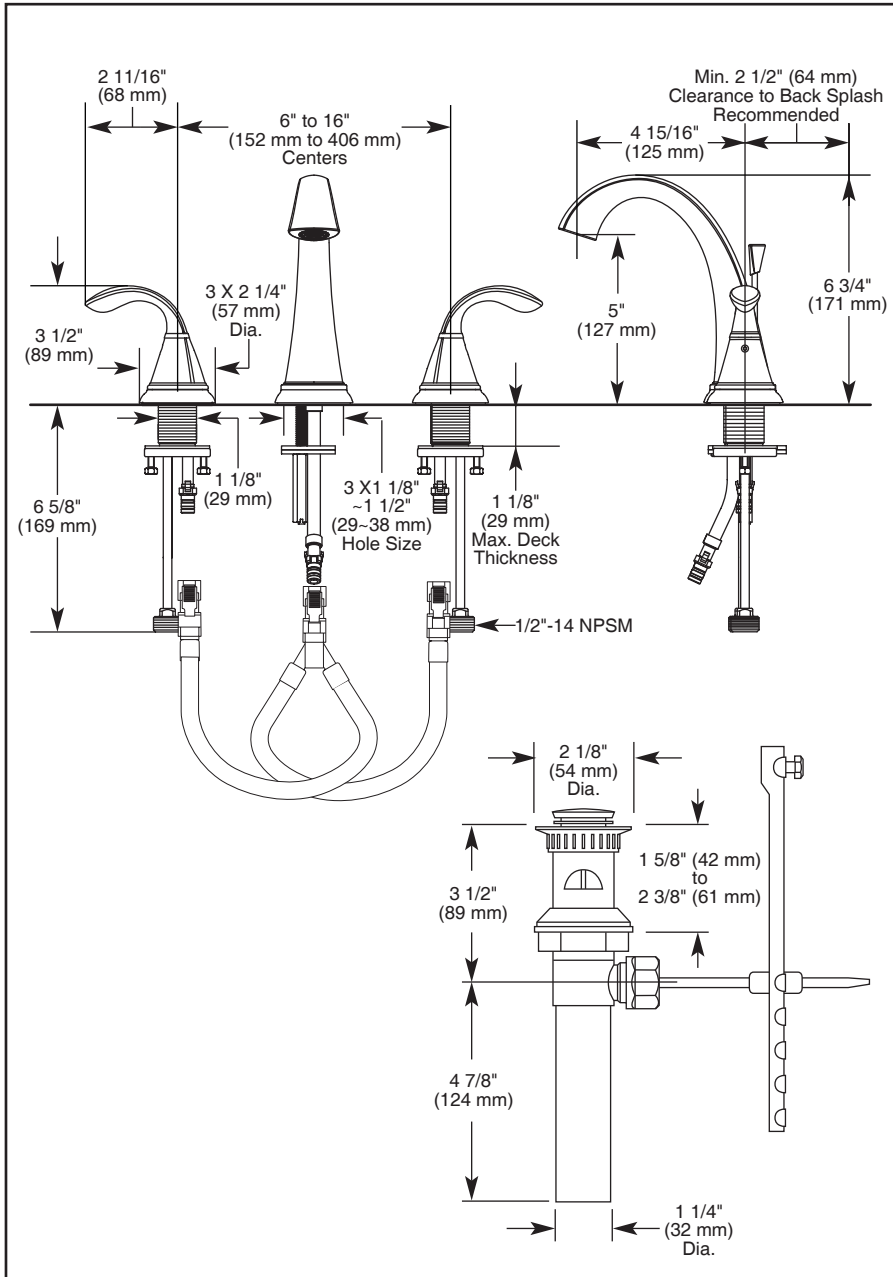


Submitted Model No.: \_\_\_\_\_

Specific Features: \_\_\_\_\_



▲ Designate Proper Finish Suffix

Delta reserves the right (1) to make changes in specifications and materials, and (2) to change or discontinue models, both without notice or obligation. Dimensions are for reference only. See current full-line price book or [www.specselect.com](http://www.specselect.com) for finish options and product availability.

DSP-L-35706LF Rev. A



# LAVATORY FAUCET

- Two Handle Widespread, Deck Mount
- 3 Hole Sink Applications
- 6" To 16" Widespread

## STANDARD SPECIFICATIONS:

- Solid brass fabricated end valve body.
- Widespread - 6" (152mm) to 16" (406mm) centers.
- 4 15/16" (125 mm) long, 6 3/4" (171 mm) high spout.
- Hot and cold stems are interchangeable.
- All operating parts are replaceable from the top.
- 1/4 turn handle stops.
- 1/2"-14 NPSM adapters.
- Control mechanism is a rotating cylinder type with stainless steel plate and 90° rotation, with replaceable non-metallic seats.
- Maximum flow rate 1.5 gpm @ 60 PSI.
- Models have drain with pop-up type fitting with plated flange and stopper.
- Note: Standard mounting deck thickness can be extended by 1" with RPI 0612.

## WARRANTY

- Lifetime Faucet and Finish Limited Warranty to the Original consumer purchaser to be free from defects in material and workmanship.
- 5 Year Limited Warranty for usage in all industrial, Commercial and Business applications.

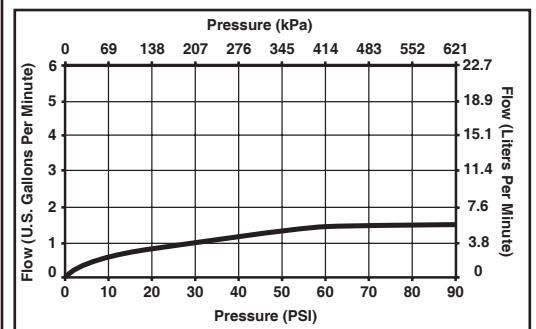


## COMPLIES WITH:

- ASME A112.18.1 / CSA B125.1
- ASME A112.18.2 / CSA B125.2

Indicates compliance to ICC/ANSI A117.1

- CSA Certified
- EPA WaterSense
- Verified compliant with 0.25% weighted average Pb content regulations.



55 E. 111<sup>th</sup> Street, Indianapolis, Indiana, 46280  
 350 South Edgeware Rd., St. Thomas, Ontario N5P 4L1  
 © 2011 Masco Corporation of Indiana