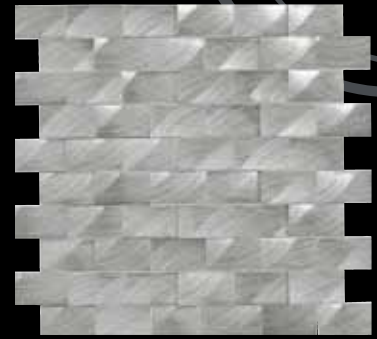


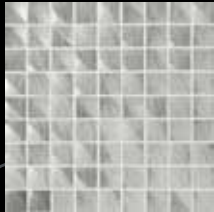
STRUCTURE



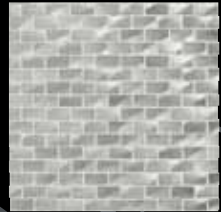
Steel ST70
12 x 12 Interlocking Mosaic



Steel ST70
1 x 2 3D Brick-joint



Steel ST70
1 x 1 Mosaic



Steel ST70
1/2 x 1 Brick-joint



Steel ST70
1/2 x 1/2 3D Cube



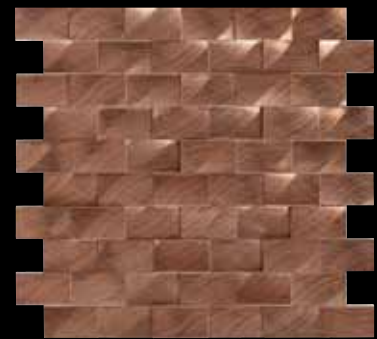
Steel ST70
1 x 1 3D Block



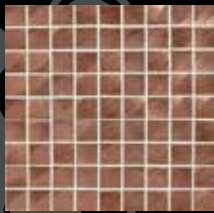
Steel ST70
1 x 2 Brick-joint



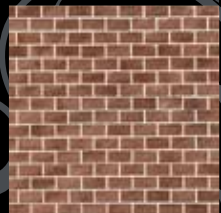
Copper ST71
12 x 12 Interlocking Mosaic



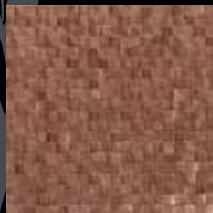
Copper ST71
1 x 2 3D Brick-joint



Copper ST71
1 x 1 Mosaic



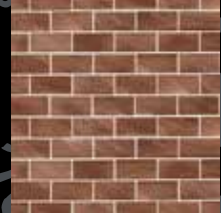
Copper ST71
1/2 x 1 Brick-joint



Copper ST71
1/2 x 1/2 3D Cube



Copper ST71
1 x 1 3D Block



Copper ST71
1 x 2 Brick-joint

Approved Usage: Walls and Backsplashes

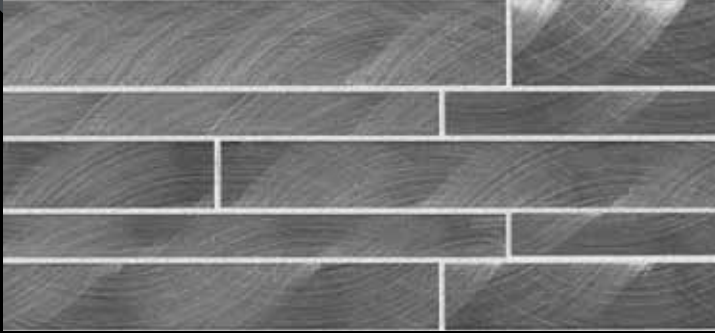


Shade Variation:
Low, Medium, High or Random

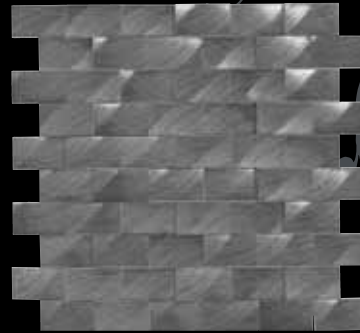
High (V2)-Color variation within each tile.

Grout joint recommendation - 1/8" Wall

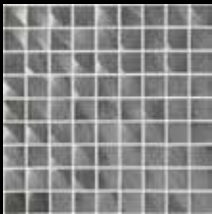




Gunmetal ST72
12 x 12 Interlocking Mosaic



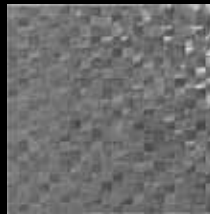
Gunmetal ST72
1 x 2 3D Brick-joint



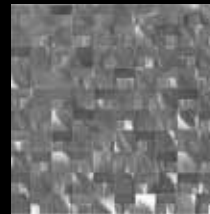
Gunmetal ST72
1 x 1 Mosaic



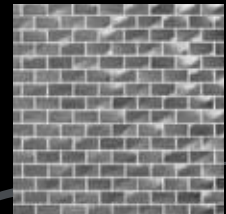
Gunmetal ST72
1 x 2 Brick-joint



Gunmetal ST72
1/2 x 1/2 3D Cube

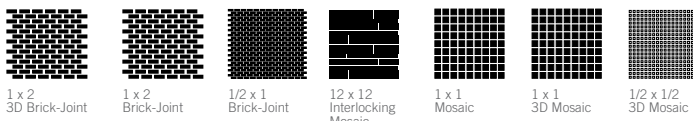


Gunmetal ST72
1 x 1 3D Block



Gunmetal ST72
1/2 x 1 Brick-joint

Sizes:



1 x 2 3D Brick-Joint 1 x 2 Brick-Joint 1/2 x 1 Brick-Joint 12 x 12 Interlocking Mosaic 1 x 1 Mosaic 1 x 1 3D Mosaic 1/2 x 1/2 3D Mosaic

Test Results:

	ASTM#	Result
Water Absorption	C373	--
Breaking Strength	C648	--
Chemical Resistance	C650	--
Scratch Resistance	MOHS	--
Coefficient of Friction	C1028	--

Size, Detail, and Packing Information:

Size	Nominal	Pieces per carton
1 x 2 3D Brick-Joint	1" x 2" (2 x 5 cm)	6
1 x 2 Brick-Joint	1" x 2" (2 x 5 cm)	6
1/2 x 1 Brick-Joint	1/2" x 1" (1 x 2 cm)	6
12 x 12 Interlocking Mosaic	12" x 12" (30 x 30 cm)	6
1 x 1 Mosaic	1" x 1" (2 x 2 cm)	6
1 x 1 3D Mosaic	1" x 1" (2 x 2 cm)	6
1/2 x 1/2 3D Mosaic	1/2" x 1/2" (1 x 1 cm)	6

NOTES: Since there are variations in all fired ceramic products, the tile and trim supplied for your particular installation may not match these samples. Final selection should be made from actual tiles and trim, and not from tile and trim samples or color reproductions. Manufactured in accordance with ANSI A137.1 standards.

