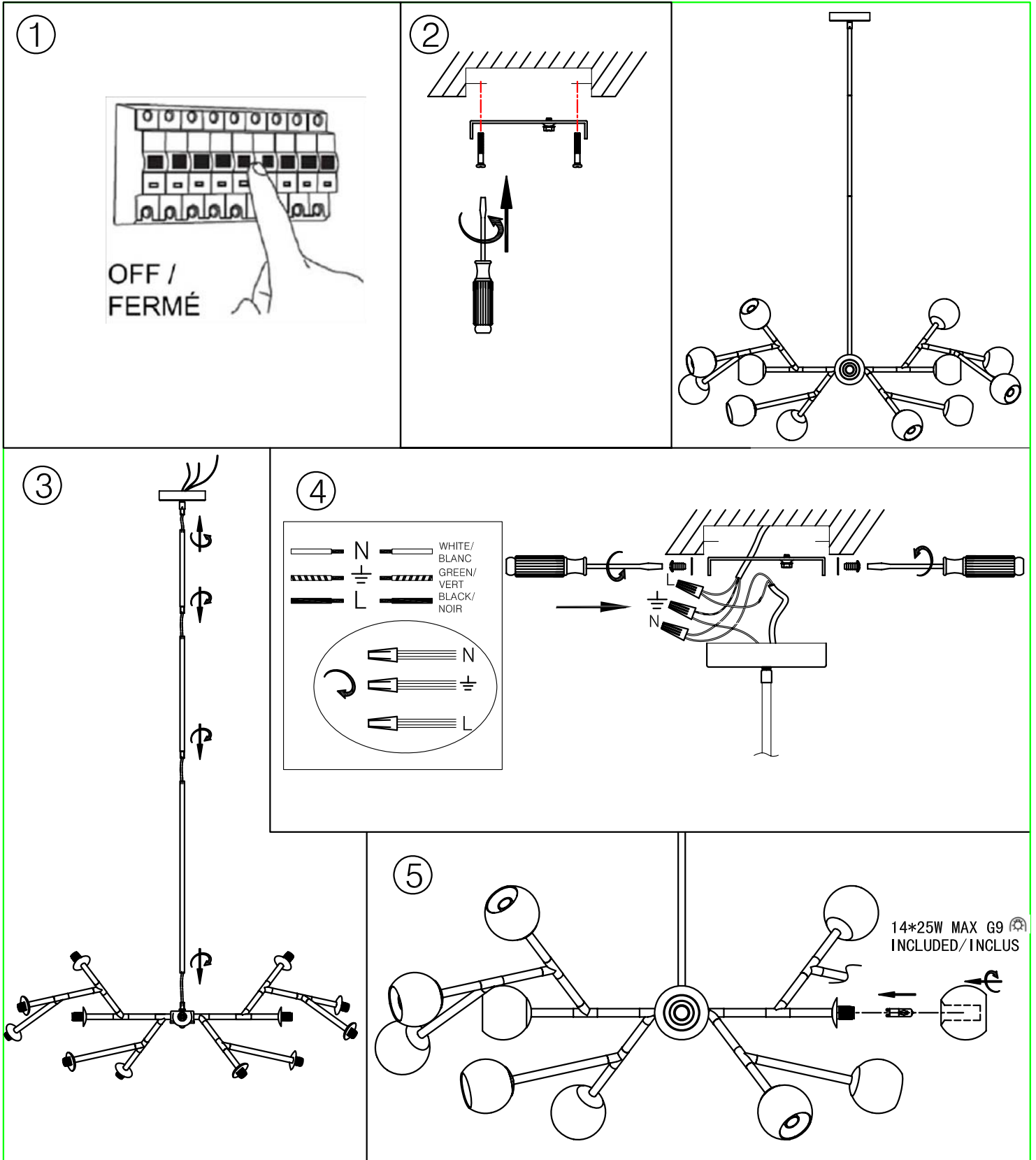




TWD-1439HC

TWD-3914HC-CHN





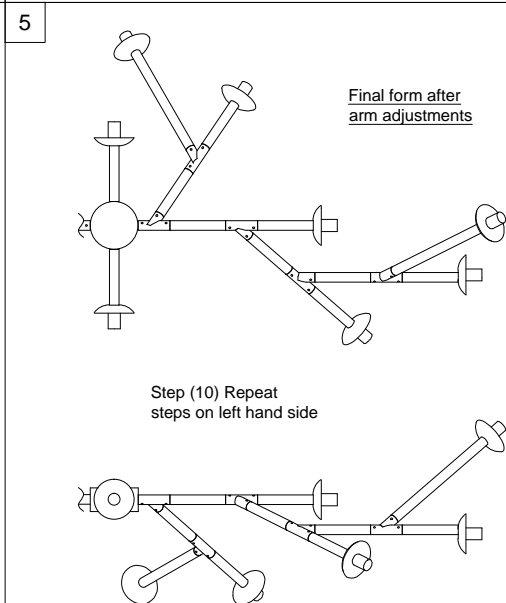
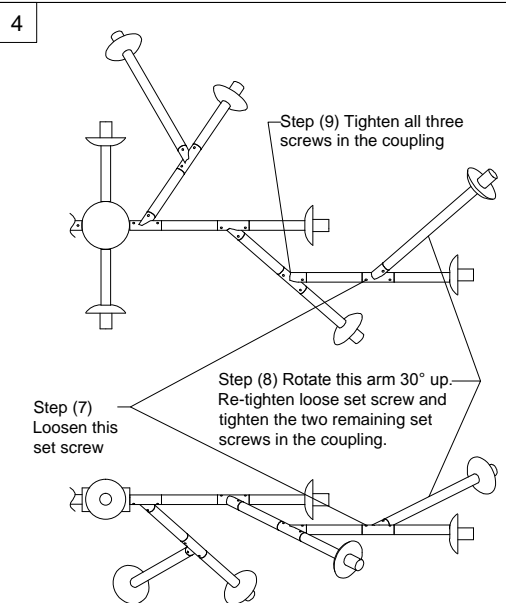
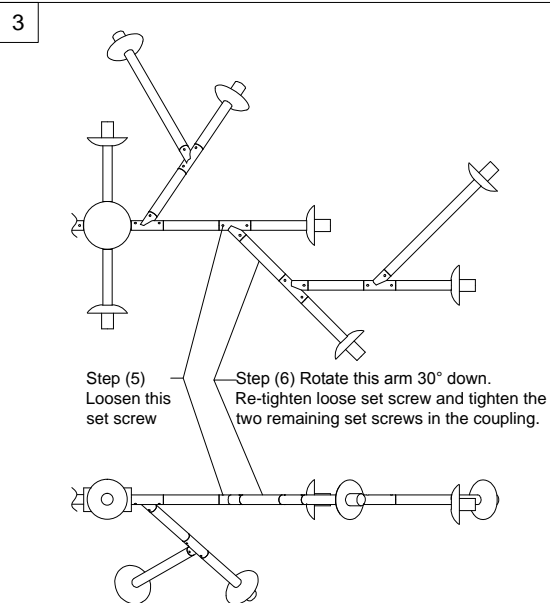
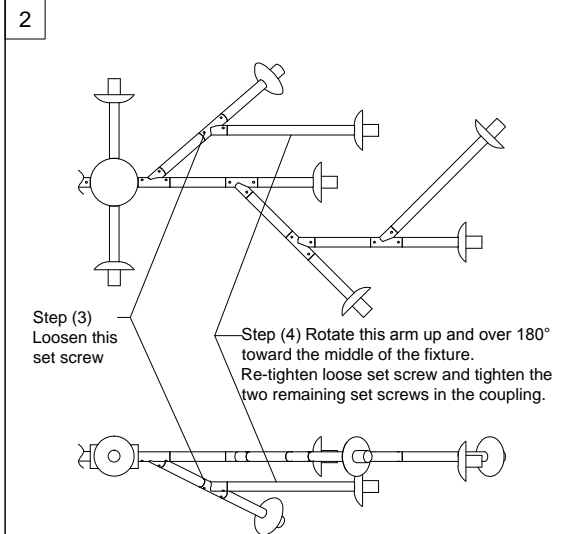
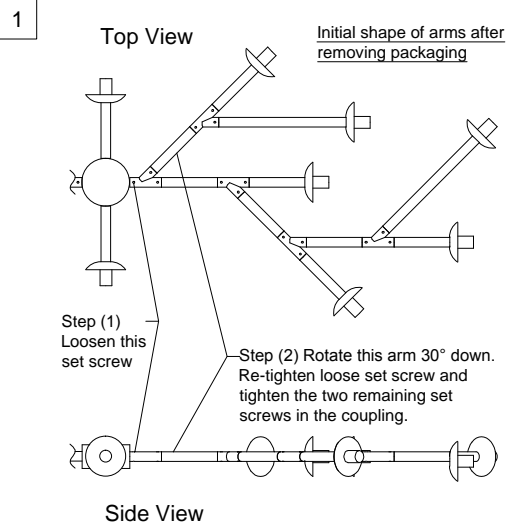
Arm Adjustment and Rotation

TWD-3914-HC / TWD-1439HC

DO FIRST: Follow these instructions before hanging the fixture

View of the right hand facing side of the fixture. You must make the same adjustments on the otherside.

Joints vary from snug to tight. Don't be afraid to twist the arms if they are stiff.





Rotation et L'Adjustment des Bras TWD-3914-HC / TWD-1439HC

PREMIÈREMENT:
Suivez ces
instructions avant de
raccrocher la l'appareil

Vue du côté droite de l'appareil. Vous devez
faire les mêmes adjustment sur l'autre côté.

Les joints peuvent être lâche ou serré. N'est pas
peur de tourner les bras, même si elles sont raides.

