



A Division of Troy-CSL Lighting, Inc.

# CounterAttack®

Project \_\_\_\_\_

Fixture Type \_\_\_\_\_

Voltage / Finish	WT	SS	BZ
<b>120V Halogen</b>	NCA-120-8 WT	NCA-120-8 SS	NCA-120-8 BZ
<b>120V Xenon</b>	NCAX-120-8 WT	NCAX-120-8 SS	NCAX-120-8 BZ

## 120V Line Voltage Xenon & Halogen



1 Lamp 8" (8"L x 5"W x 1½"H)

### COUNTER ATTACK® FEATURES

**Construction:** Rolled steel, painted post manufacturing with molded plastic end caps.

**Finish:** Powder coat paint: White & Bronze or true Stainless Steel

**Lens:** Prismatic glass for even light distribution with UV coating

**Lamps:** Available in 35W 120V Halogen or 35W 120V Xenon G-8 Bi-pin base clear lamp. Halogen: 320 lumens @ 2,900K color temperature, 6,000 hour average rated life. Xenon: 270 lumens @ 2,650K color temperature, 9,000 hour average rated life.

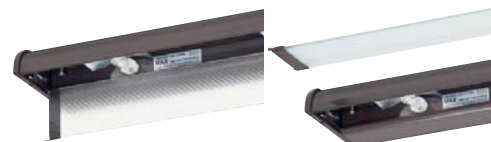
**Electrical:** 120V hardwire only. No transformers remote or integral

**Dimming:** Dimming using 120V incandescent dimmer

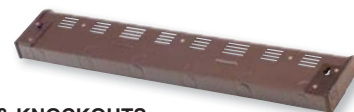
**Installation:** Counter Attack easily comes apart with no tools required to enter the wire way. Large knockouts located every 4" on the back and top of the fixture and additional knockouts located on the sides. Once knockout has been removed, the fixture easily mount by use of captive screws pre-installed. Using wire nuts, connect 120V wires to wires within fixture, close fixture wire way and insert glass.

**Listing:** UL and cUL

**Warranty:** Counter Attack fixtures have a 1 year limited warranty from time of purchase from CSL

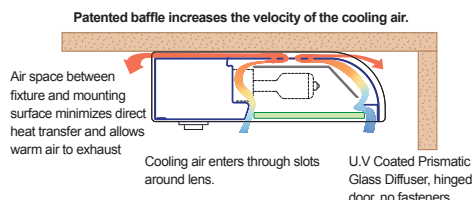


Removable hinged diffuser for easy and safe lamp replacement. Captive screws, fast installation.



#### MOUNTING & KNOCKOUTS

Counter Attack installs easily with two easy-to-access captive mounting screws. Fast, easy installation with multiple knockouts on ends, back and top for through-wiring, Wiremold, flex, Romex or rigid conduit.



#### Improved CounterAttack

Removable hinged diffuser; easy and safe lamp replacement

Captive screws: Easiest installation for under cabinet lighting

- 120V 35W Halogen and Xenon non-linking versions
- Longer lamp life than others due to patented cooling system
- Fast easy installation – complete with mounting hardware
- Knockouts on ends (non-linking only), back and top for through-wiring, Wiremold, flex, Romex or rigid conduit
- Repositioned cooling slots.
- Porcelain sockets used for high temperature durability
- Non-yellowing U.V. coated glass prismatic diffuser for maximum light distribution and U.V. protection
- Lamps included, no tools required for relamping
- Hi-Off-Lo switch, dimmable, energy saving
- Low profile fixture – 1½" high
- Available in white, stainless steel and bronze
- Protected by multiple US patents