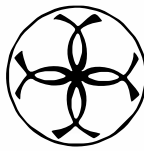


CRYST RAMA



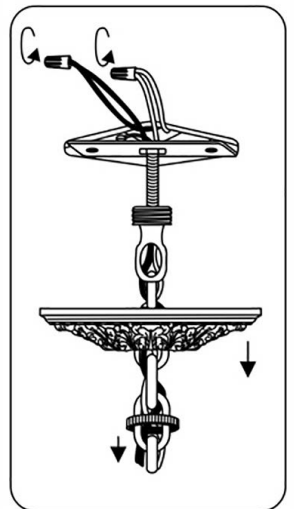
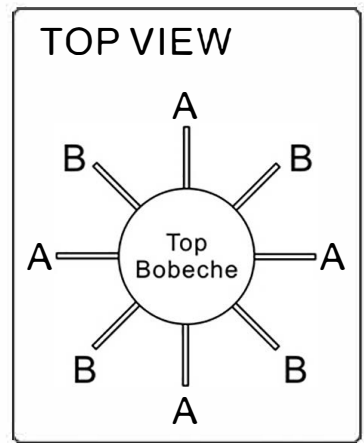
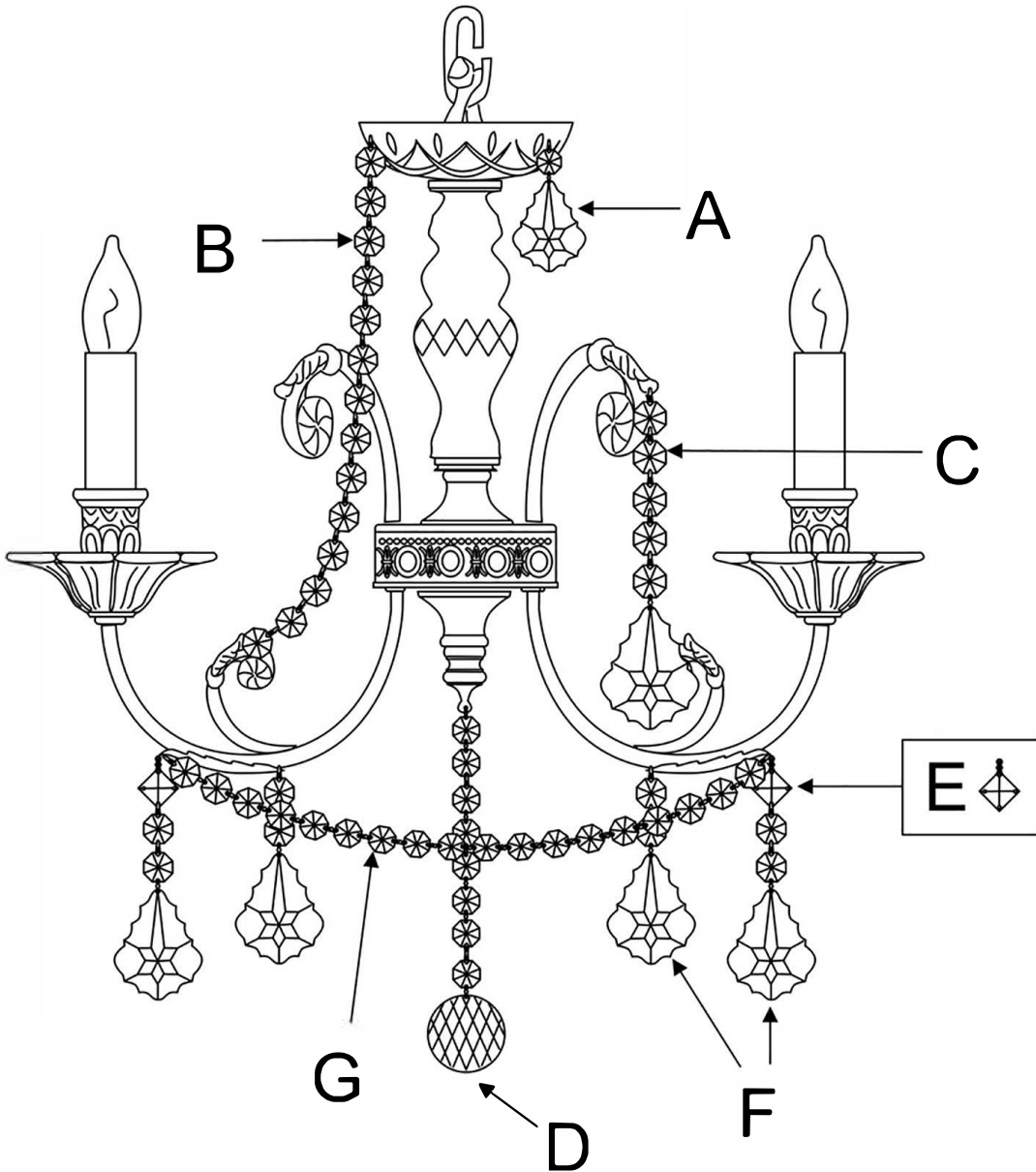
1958

95 Cantiague Rock Road, Westbury NY 11590
 ph:516.931.9090 fax: 516. 931.1254
 info@crystorama.com www.crystorama.com

MODEL#:5114 ASSEMBLY AND DRESSING INSTRUCTIONS



All electrical components must be installed by a licensed electrician in accordance with the National Electric Code and the appropriate local electrical codes.



- A= (20/50-2") * 4sets
- B= (14 Jewels Strand) * 4sets
- C= (20/64-2.5" + 5 Jewels) * 4sets
- D= (1x40mm Ball + 8 Jewels) * 1pc
- E= (Square - 4 Holes) * 4sets
- F= (20/64-2.5" + 2 Jewels) * 8sets
- G= (16 Jewels Strand) * 4sets

