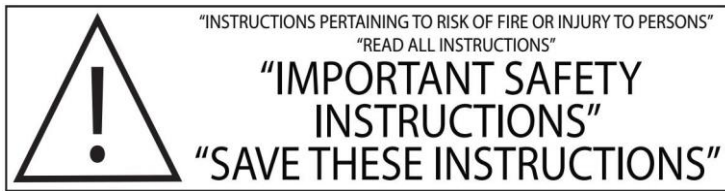


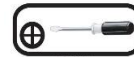
LED DISC LIGHT

Dimmable

LED-6L



TOOLS AND MATERIALS REQUIRED:



Phillips
Screwdriver



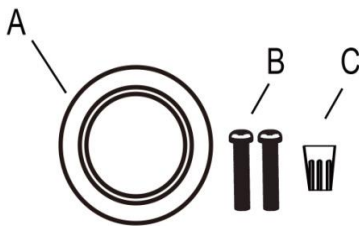
Wire Cutters

Wiring supplies
as required
by your local
Provincial or
State Electrical
Code

SAFETY PRECAUTIONS:

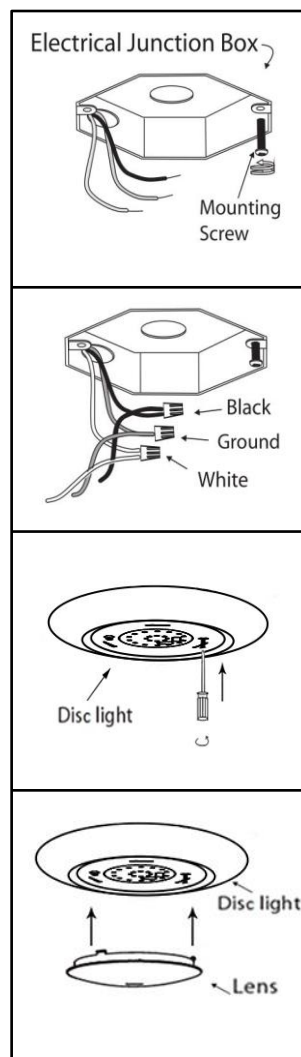
1. TURN OFF ELECTRICAL POWER BEFORE STARTING INSTALLATION OF LIGHT FIXTURE.
2. THIS PRODUCT MUST BE INSTALLED IN ACCORDANCE WITH THE APPLICABLE INSTALLATION CODE BY A CERTIFIED ELECTRICIAN FAMILIAR WITH LOCAL MUNICIPAL CODES AND REQUIREMENTS.
3. CONSULT A QUALIFIED ELECTRICIAN TO ENSURE CORRECT BRANCH CIRCUIT CONDUCTOR.

PAR T	DESCRIPTION	QTY
A	LED disc light	1
B	Mounting screws	2
C	Wire nut	3



FLUSH MOUNT

This LED light is compatible to be dimmed by LUTRON #DVCL-153P, MACL-153MH, TGCL-153P, LEVITON #6633, 6633-P, 6672, 6674, IPL06. Dimming levels may vary by different dimmer .



1. Prior to installation, install 1 mounting screw into the junction box. Do not drive screw completely to the end of the junction box.
2. Connect supply wires to wires on fixture with wire nuts. Connect white to white, black to black, and copper wire to copper wire as grounding connection.
3. With the lens off of fixture, attach disc light to mounting screw and drive it completely to the end of the junction box. Align the other mounting hole to the junction box hole to tighten the other screw to firmly hold the fixture in place.
4. Complete the installation by twisting the lens on the disc light.

Made in China