

**FEATURES**

- Clear acrylic prismatic diffuser, flat bottom with vertical sides
- Two, three, or four-lamp cross sections
- Hinges from either side
- White steel end plates with flush knockouts for continuous row mounting
- Heavy gauge steel housing die embossed for maximum rigidity
- Heat sink embossments and levelling projections allow direct mounting of HPF fixtures on combustible low density cellulose fiberboard ceilings
- All metal parts are treated with a five stage phosphate bonding process and finished with a baked white enamel

**PROJECT INFORMATION**

Project Name \_\_\_\_\_

Type \_\_\_\_\_

Catalog No. \_\_\_\_\_

Date \_\_\_\_\_

**BALLASTS**

Energy efficient, thermally protected, automatic resetting, Class P, high power factor, sound rated A, unless otherwise specified. CEE NEMA Premium compliant.

**ELECTRICAL**

Standard class "P", thermally protected, auto-resetting HPF ballast, sound rated A. CEE NEMA Premium compliant. All ballast leads extend a minimum of 6" through access location. NEC/CEC-compliant ballast disconnect is standard.

**FINISH**

All parts pre-painted with high gloss baked white enamel, minimum reflectance 86%, applied over iron phosphate pre-treatment for maximum adhesion and rust resistance.

**SHIELDING**

100% clear prismatic acrylic.

**CERTIFICATION**

All luminaires are built to UL 1598 standards and bear appropriate UL and cUL or CSA labels. Damp location labeling is standard. Emergency-equipped fixtures labeled UL 924.

**ORDERING INFORMATION**

**EXAMPLE AWN4-232-EU**

AWN		-		2		-		-	
MODEL	LENGTH	NO. OF LAMPS IN CROSS SECTION		LAMP TYPE	BALLAST	VOLTAGE	OPTIONS		
AWN 8 <sup>5</sup> / <sub>16</sub> " Wide Low Profile Wraparound	2 2' 4 4' 8 8'	2 Two		17 2', T8: 17 Watt 28 4', T5: 28 Watt 32 4', T8: 32, 30, 28 or 25 Watt 54 4', T5HO: 54 or 51 Watt	E Electronic T8, Instant Start 4E 4-Lamp Electronic T8, Instant Start EP Electronic T5 or T8, Programmed Start 4EP 4-Lamp Electronic T5HO or T8, Programmed Start	U 120V-277V 347 347V	GLR Fast Blow Fuse EL Emergency Battery Pack PAF Paint After Fabrication NYC NYC Compliant NYCU NYC Compliant, Union Label		
For a specific ballast vendor, show as option.									
<b>ACCESSORIES (ORDER SEPARATELY)</b>									
S18 18" Stem, Canopy									
SS18 18" Swivel Stem - 45° Swivel									

## PHOTOMETRIC DATA

Test 12409 Test Date 7/23/03

### LUMINAIRE DATA

Luminaire	AWN4-232 AWN/AWW Wraparound 8" x 48" 2-Lamp with Wraparound Acrylic Prismatic Lens
Ballast	B232I120RH
Ballast Factor	0.88
Lamp	F32T8
Lumens per Lamp	2900
Watts	54
Shielding Angle	N/A
Spacing Criterion	0° = 1.28 90° = 1.36
Luminous Opening in Feet	Length: 3.99 Width: 0.68 Height: 0.12

### ZONAL LUMEN SUMMARY

Zone	Lumens	% Lamp	% Fixt.
0-30	1089	18.8	26.2
0-40	1800	31.0	43.3
0-60	2948	50.8	70.9
0-90	3665	63.2	88.1
90-120	385	6.6	9.3
90-130	428	7.4	10.3
90-150	476	8.2	11.4
90-180	493	8.5	11.9
0-180	4158	71.7	100.0

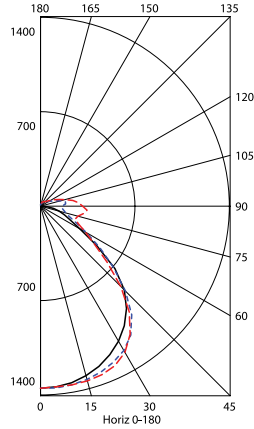
### ENERGY DATA

Total Luminaire Efficiency	71.7%
Luminaire Efficacy Rating (LER)	68
IESNA RP-1-1993 Compliance	Noncompliant
Comparative Yearly Lighting Energy Cost per 1000 Lumens	\$3.53 based on 3000 hrs. and \$0.08 per KWH

### COEFFICIENTS OF UTILIZATION (%)

RCR	RC	80				70				50				0
		RW	70	50	30	10	70	50	30	10	50	30	10	0
1	76	72	69	66	73	70	67	64	65	63	61	52		
2	69	63	58	54	66	61	57	53	57	54	51	44		
3	63	56	50	46	61	54	49	45	51	47	43	38		
4	58	50	44	39	56	48	43	38	46	41	37	32		
5	54	45	39	34	52	43	38	33	41	36	32	28		
6	50	40	34	30	48	39	34	29	37	32	28	25		
7	46	37	31	26	44	36	30	26	34	29	25	22		
8	43	34	28	24	41	33	27	23	31	26	23	20		
9	40	31	25	21	39	30	25	21	29	24	20	18		
10	38	28	23	19	36	28	23	19	26	22	19	16		

### INDOOR CANDELA PLOT



### AVG. LUMINANCE (Candela/Sq. M.)

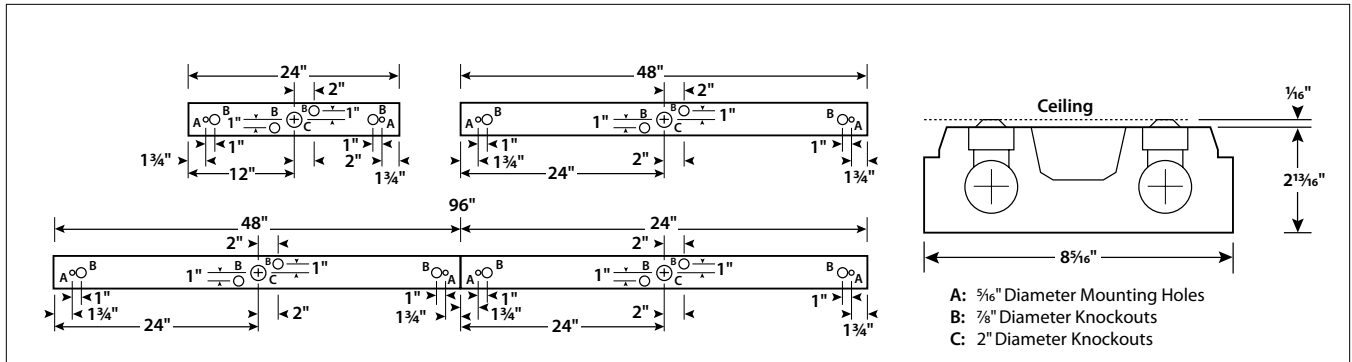
Average Luminance Angle	0.0	22.5	45.0	67.5	90.0
0	5356	5356	5356	5356	5356
30	5205	5124	5218	5214	5201
40	5006	4920	4849	4675	4615
45	4782	4605	4357	4089	4006
50	4290	4068	3706	3331	3279
55	3362	3476	3073	2630	2679
60	2526	2840	2489	2266	2340
65	2143	2221	2073	2111	2098
70	2025	1848	1879	2117	2148
75	1971	1707	1925	2404	2652
80	1932	1720	2174	3169	3677
85	1762	1917	2711	4499	5220

RCR = Room Cavity Ratio

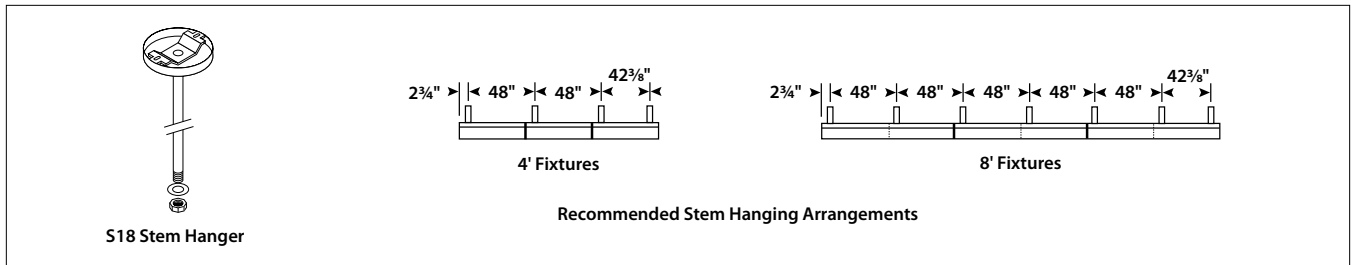
RC = Effective Ceiling Cavity Reflectance RW = Wall Reflectance

0.0 ——— 45.0 - - - - - 90.0 - - - - -

### DIMENSIONAL DATA



### STEM MOUNTING



**NOTE:** All dimensions are in inches; dimensions and specifications are subject to change without notice. Please consult factory or check sample for verification.