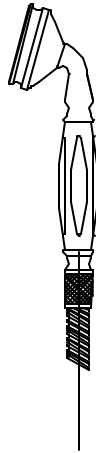
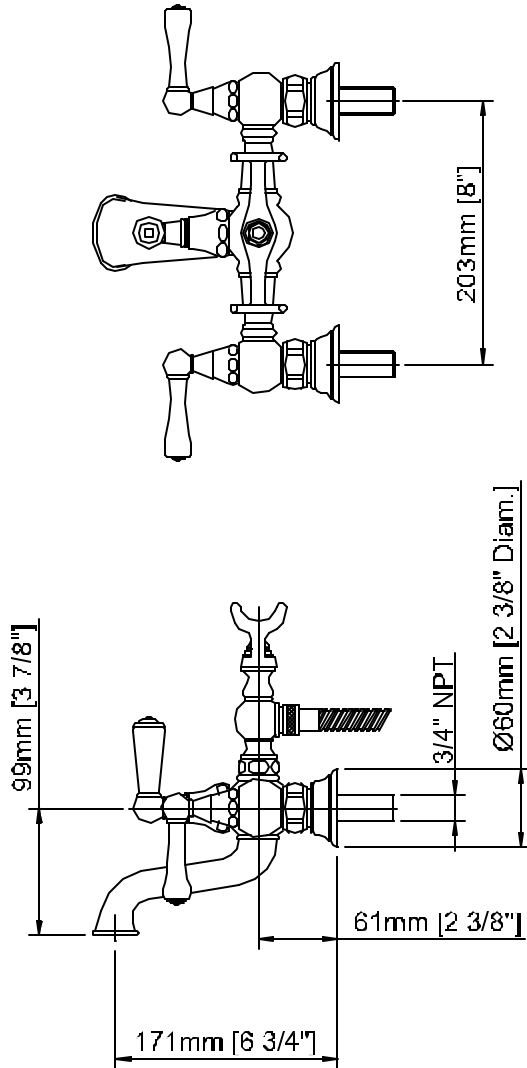


TECHNICAL SPECIFICATIONS

Asbury Series: Claw Foot Bathtub

27x330

Model# | 278 330 xxx

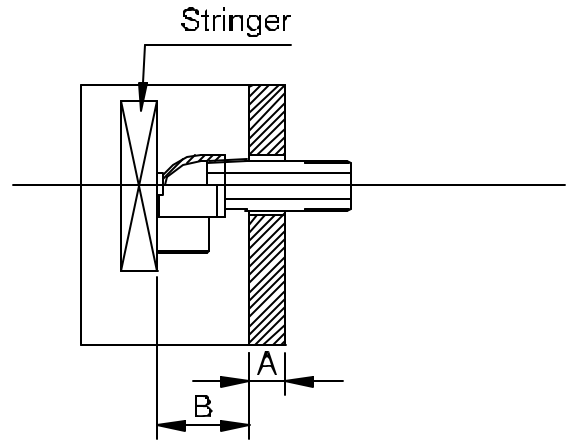


Note:

Qty. 2-3" brass nipples included in box

Qty. 2-3/4" FIP x 3/4" SWT 90 drop ear elbows included in box

*Be sure to insert tapered end of nipple into drop elbow as the opposite end has straight threads needed to affix trim.



A – Finished Wall Thickness		B – Rough-in Depth		
From	To	Provide Nipple	Alternate nipples available upon request	
		3" nipple [#3445010]	2 1/2" nipple [#34400117]	3 1/2" nipple [#34400118]
1/8"	3/4"	2 1/2"	2"	3"
3/8"	5/8"	2 1/4"	1 3/4"	2 3/4"
5/8"	7/8"	2"	x	2 1/2"
7/8"	1 1/8"	1 3/4"	x	2 1/4"

2935 Amwiler Road
Atlanta, GA 30360-6001



Phone: 800.528.4904
Fax: 800.528.1969

TECHNICAL SPECIFICATIONS

Asbury Series: Claw Foot Bathtub

27x330

Service Parts

Model# 278 330 xxx

1	Faucet body	
2	Nipple 3"	3445010
3	Bell	3441011-xxx
4	Washer	5343025
5	Seat	3300011
6	Nylon washer	5323106
7	Nut	3300012-xxx
8	¾" x ¼ Ceramic cartridge	571502 - HOT 5711504 - COLD
9	Spline adapter	
10	Bonnet nut	
11	Washer	
12	Spine Screw	
13	Set screw	50030080033
14	Asbury Lever handle	278.905.xxx
15	Diverter Lever	34100ED-xxx
15.1	Button	3400020-xxx
15.2	Porcelain insert	5230025
15.3	Nylon bushing	5420061
15.4	Ring	3400019-xxx
15.5	Spindle	3400023-xxx
15.6	Handle body	3400016-xxx
15.7	Set screw	50030080033
16	Diverter mechanism	3560010-xxx
16.1	Diverter cover	35000-xxx
16.2	O-ring 18.72 x 2.62	5310187-262
16.3	Diverter valve body	3500019-xxx
16.4	Nylon washer	5323109
17	Spout	
18	Pin	5745020i006
19	O-ring 9.5 x 1.5	5310095-150
20	Nut	3500025
21	Plastic obturator	5430010
22	Nylon washer	5323104
23	Seat	3300013
24	Cradle	3450202-xxx
25	Hose	3450033-xxx
26	Built in check valve/flow regulator	31.2016.1 – RV003
27	Handshower	34520ED-xxx

