

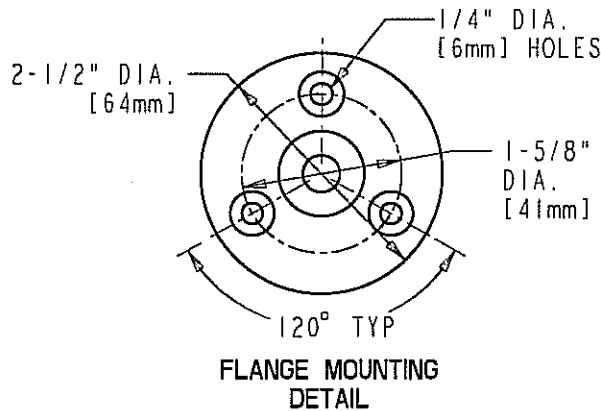
JOB NAME

ITEM NO.

SUBMITTED AS SHOWN

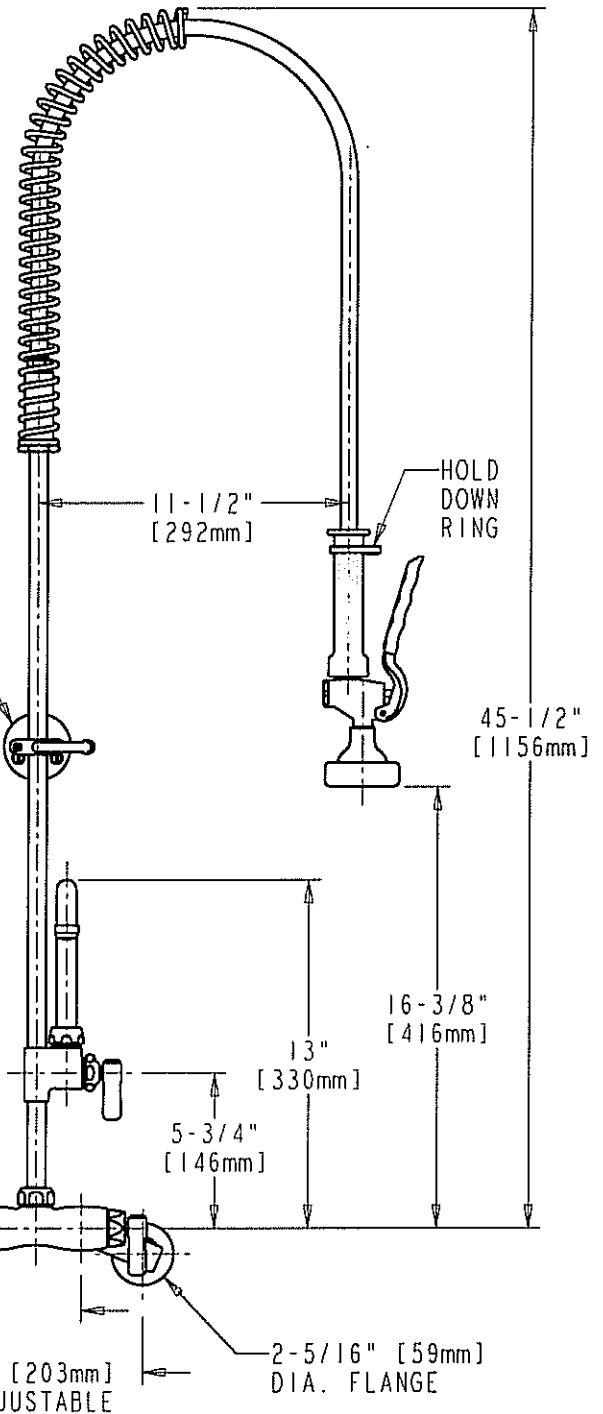
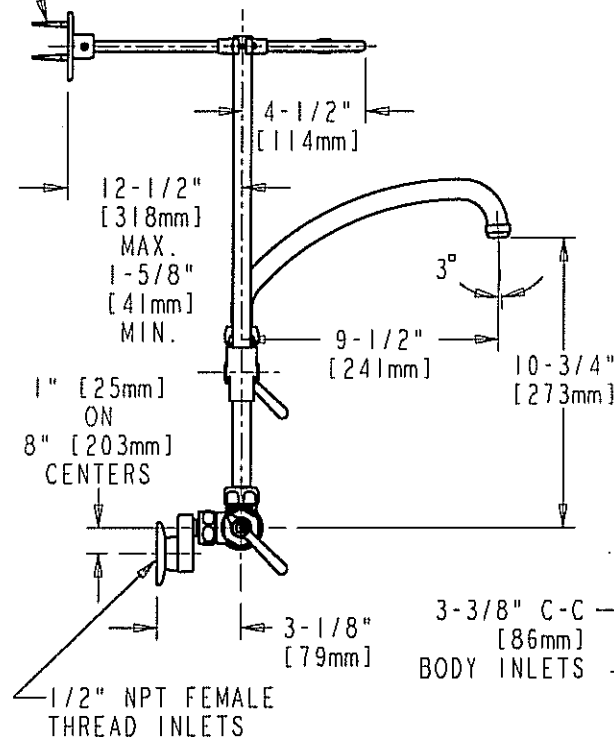
SUBMITTED AS NOTED

SEE ATTACHED FOR
SUBMITTED MODIFICATION



(3) #10 FLAT
HEAD WOOD SCREW
1-1/2" [38mm] LONG

SEE FLANGE
MOUNTING DETAIL



TECHNICAL DATA

- WALL MOUNTED PRE-RINSE
- 44" STAINLESS STEEL HOSE
- 80-L PRE-RINSE SPRAY HEAD
- 369 INDEXED LEVER HANDLES
- QUATURN OPERATING CARTRIDGES
- "H" OFFSET INLET SUPPLY ARM
- FINISH: CHROME PLATE

- 613-A ADAPTA FAUCET WITH L9 SWING SPOUT
- EI QUIXTOP OUTLET
- 23" RISER
- INTEGRATED PIPE SUPPORT & HOOK ASSEMBLY
- ASME A112.18.1B COMPLIANT
- CSA B125 COMPLIANT

DATE: 9-13-06

BY: JAR

CHK'D:

APP'D: *JA*

REV:

923-613AL