

CHICAGO[®] FAUCETS

2100 SOUTH CLEARWATER DRIVE
DES PLAINES, ILLINOIS 60018-5999

FITTING NO.

894-317

SUBMITTED MODEL NO.

JOB NAME

ITEM NO.

SUBMITTED AS SHOWN

SUBMITTED AS NOTED

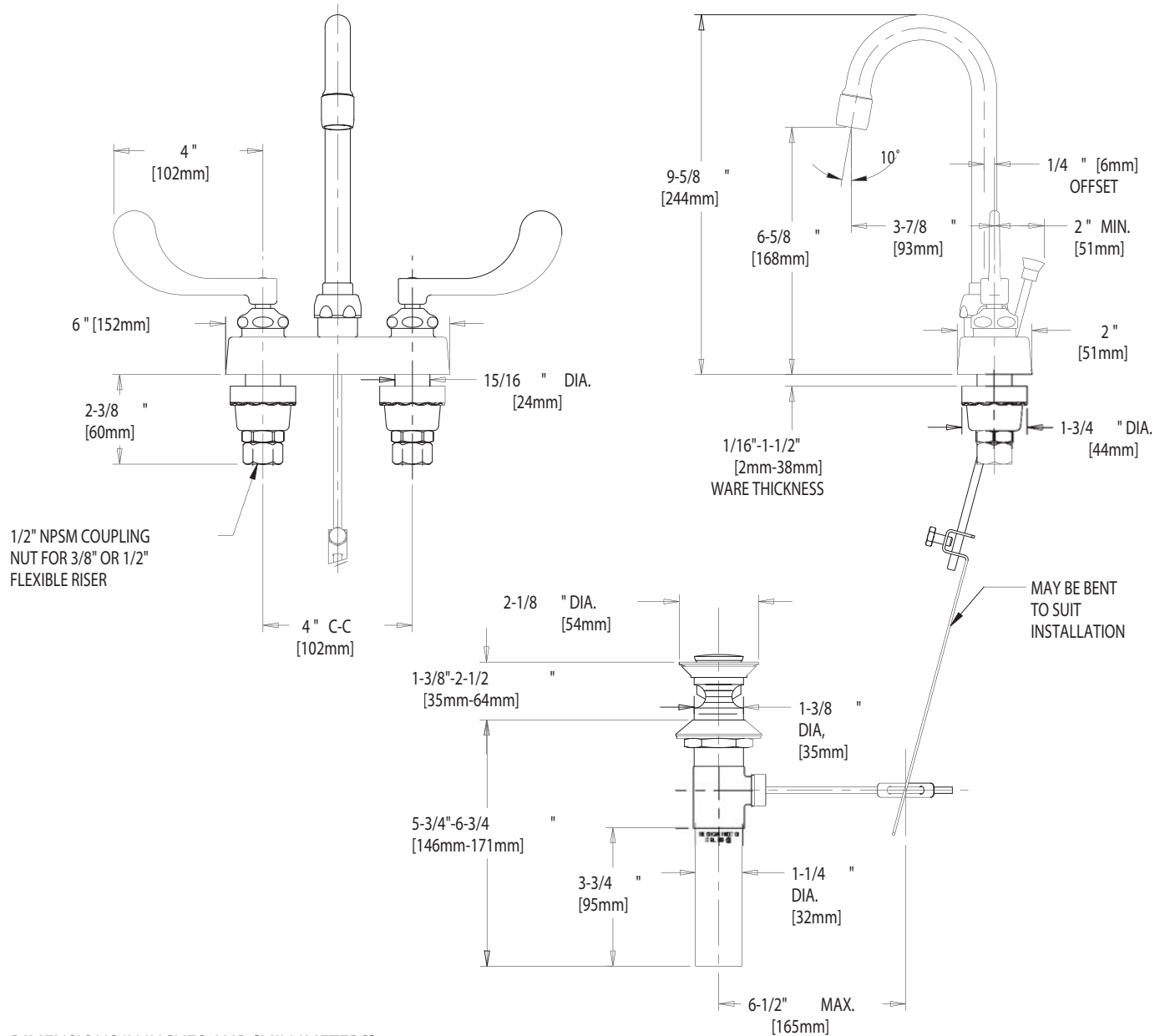
SEE ATTACHED FOR
SUBMITTED MODIFICATION



ADA COMPLIANT

IS ASSUMED FOR USE OF SUPERCEDED OR VOIDED DATA. (0192-1)

ROUGHING IN DIMENSIONS MAY VARY AND ARE SUBJECT TO CHANGE. NO RESPONSIBILITY



DIMENSIONS IN INCHES AND [MILLIMETERS]

TECHNICAL DATA

- DECK MOUNTED LAVATORY FAUCET
- GN1A RIGID/SWING GOOSENECK SPOUT
- 317 INDEXED WRISTBLADE HANDLES
- QUATURN UNITS
- POLISHED CHROME FINISH OR AS SPECIFIED

- 1-1/4" OD POP-UP WASTE
- E3 SOFTFLO OUTLET
- 2.0 GPM (7.6 L/min.)
- ANSI A112.18.1 COMPLIANT
- CSA B125 COMPLIANT

@ 80 PSI

DATE: 11-26-96
BY: MGM
CHK'D:
APP'D:
REV: 2-14-02

894-317