

CAL-ROYAL 700 SERIES

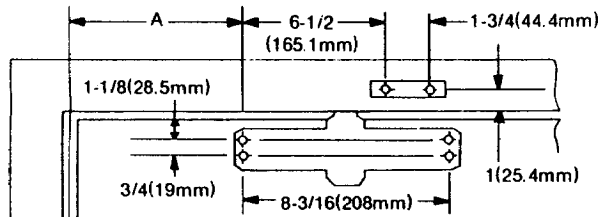
PRODUCTS, INC.

Model: 700 Series

Size : 2, 3, 4, 5.
No Hold-Open/Hold-Open

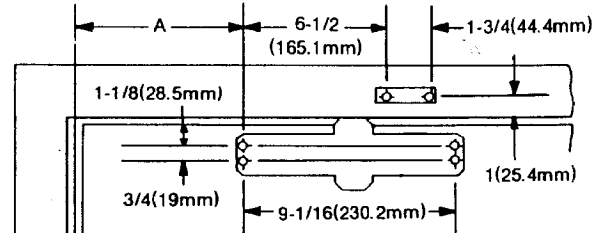
Installation Instructions for REGULAR ARM(PULL SIDE) Mounting

THIS TEMPLATE COVERS REGULAR ARM INSTALLATIONS TO 180° OPENINGS.



Hinge
or
Pivot

SIZE: 2 & 3
Model: 720, 730
720BC, 730BC



Hinge
or
Pivot

SIZE: 4 & 5
Model: 740, 750
740BC, 750BC

- Right hand door shown
- Left hand door opposite
- Dimensions are in inches
- Do not scale drawing

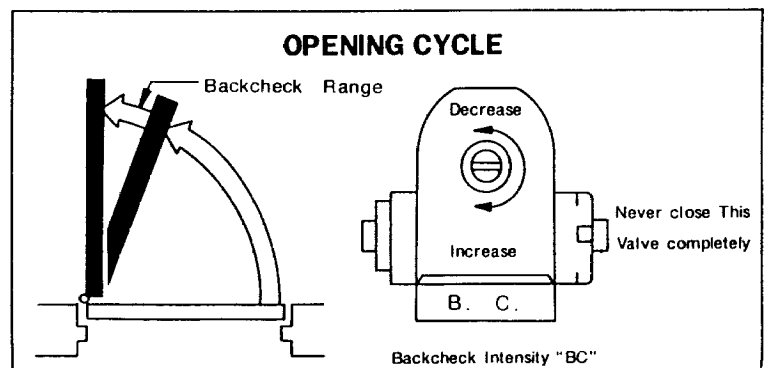
OPENING	DIM. A SIZE: 2 & 3	DIM. A SIZE: 4 & 5
To 120°	6 1/2(165.1mm)	6 1/2(165.1mm)
120°-180°	4(101.6mm)	4(101.6mm)

INSTALLATION INSTRUCTIONS

1. Select door opening angle and use dimensions shown above, mark four(4) holes on door for door closer and two(2) holes on frame for arm shoe.
2. Drill pilot holes in door and frame for #14 all-purpose screws or drill and tap for 1/4-20 machine screws.
3. Install forearm/arm shoe assembly to frame using screws provided.
4. Mount closer on door using screws provided. SPEED ADJUSTING VALVE MUST BE POSITIONED TOWARD HINGE EDGE.
5. Install main arm to top pinion shaft, perpendicular to door as shown below. Secure tightly with arm screw/washer assembly provided.
6. Adjust length of forearm so that forearm is perpendicular to frame when assembled to preloaded main arm(illustration below). Secure forearm to main arm with screw/washer assembly provided.
7. Snap pinion cap over shaft at bottom of closer.
8. Adjust closing speed of door, following instructions as shown

OPENING CYCLE

- NOTE : These instructions apply only to closers equipped with backcheck.
- To increase backcheck intensity, turn valve marked "BC" clockwise.
 - To decrease backcheck intensity, turn valve marked "BC" counter-clockwise.



Backcheck Intensity "BC"