

# Installation Instruction

## Single Handle Kitchen Faucet



### Tools You Will Need



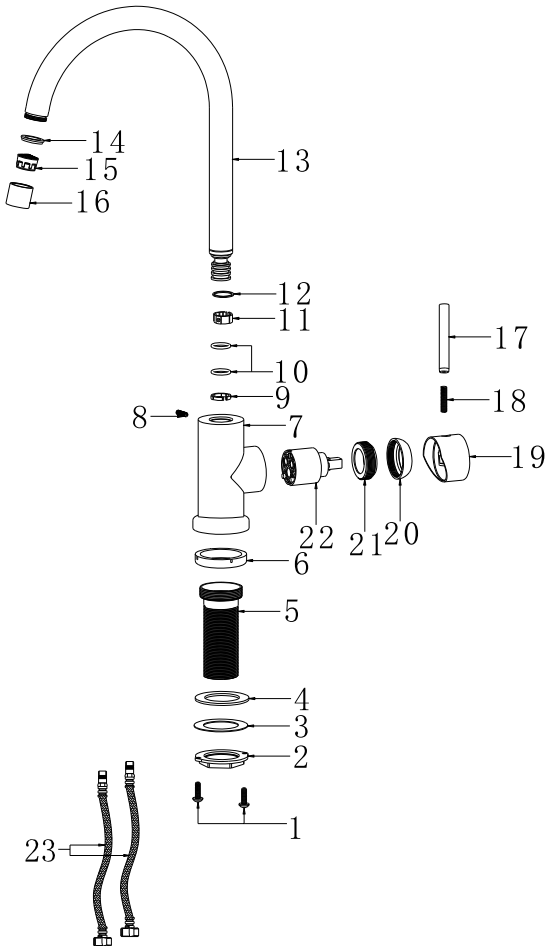
Adjustable wrench



Phillips screwdriver

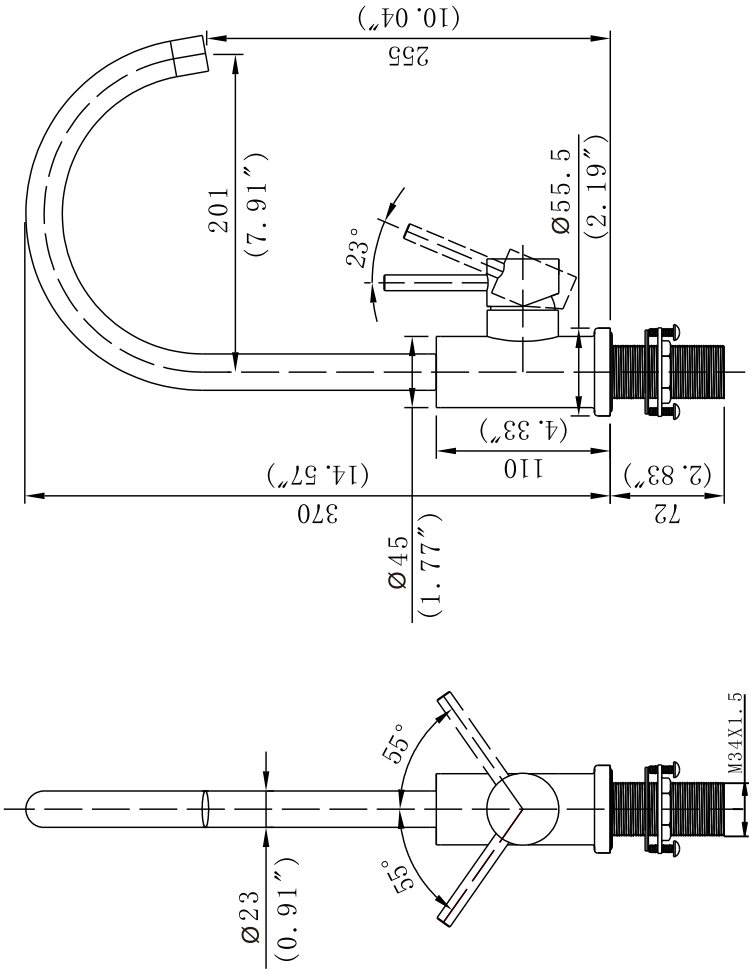
# Replacement Parts

Keep this manual for ordering replacement parts.



- 1 Screws
- 2 Locking nut
- 3 Metal gasket
- 4 Rubber gasket
- 5 Extension pipe
- 6 Bottom gasket
- 7 Faucet base
- 8 Set screw
- 9 Plastic locking ring
- 10 O-rings
- 11 Plastic locking ring
- 12 O-ring
- 13 Spout
- 14 Gasket
- 15 Aerator
- 16 Aerator holder
- 17 Handle lever
- 18 Screw
- 19 Handle
- 20 Cartridge cover
- 21 Locking nut
- 22 Cartridge
- 23 Hot & cold waterlines

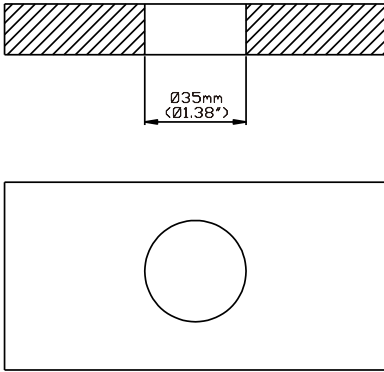
# Product Dimension Drawing



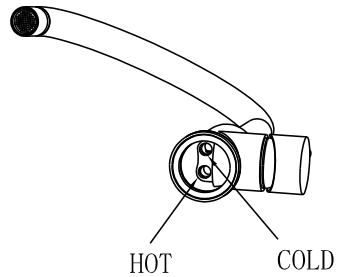
## Prior to Installation

Make sure the water flow is not restricted by sand, silt or other blockages. Blockages must be cleared for normal faucet operation.

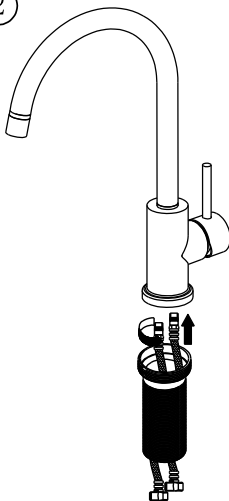
## Faucet Installation Procedures



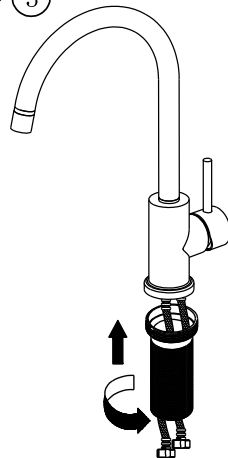
step ①



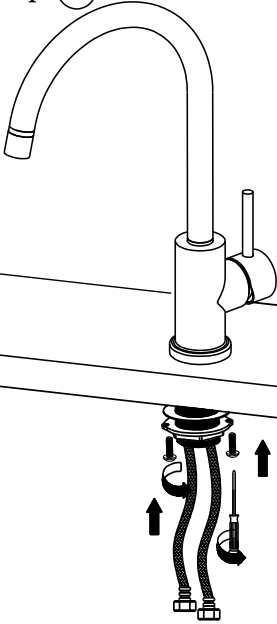
step ②



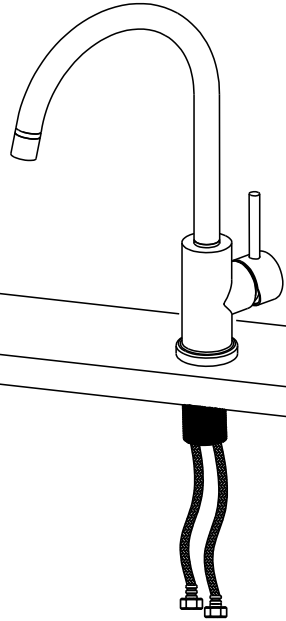
step ③



step ④



step ⑤



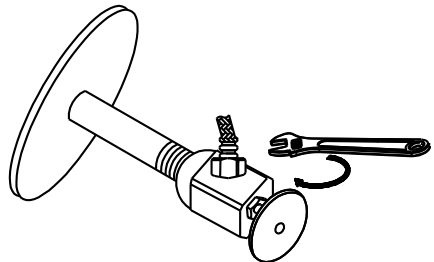
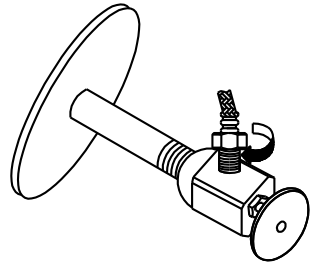
step ⑥

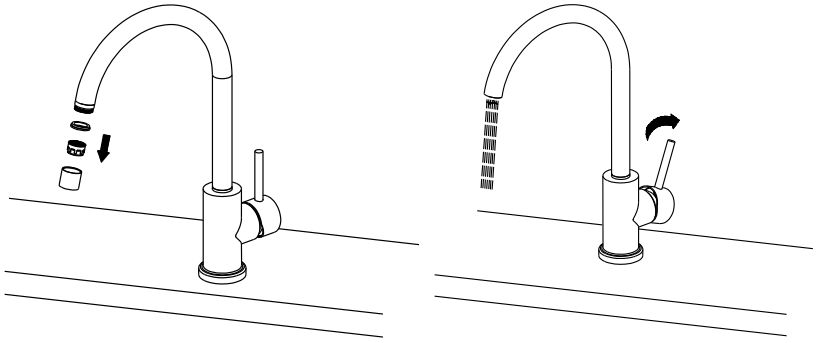
### Important

Check if O-rings are installed on both ends of the hot&cold waterlines.

Apply Teflon tape and screw hot/cold waterline connections until snug.

Check for leaks before proceeding to the next step.





step ⑧

