

Job Name:

Contact:

Ordering Code:

Fixture Type:

VIA System

# VIA Track



## VIA Straight Track

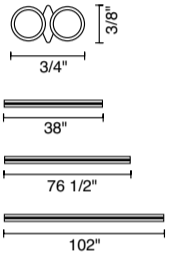
The VIA Track is a low-voltage copper tube track. The VIA Track consists of 2 copper pipes with galvanized surface finish in bronze, chrome, or matte chrome. Center plastic insulations is dyed black or grey. Factory curved track available.

### Technical Specs

- 300VA maximum thru-put
- 12V AC/DC rated
- Suitable for dry locations only

Ordering Code:

example: **160 - 032 - bz**



| Base    | Length             | Finish                   |
|---------|--------------------|--------------------------|
| 160 VIA | <b>031</b> 38"     | <b>bz</b> bronze         |
|         | <b>032</b> 76-1/2" | <b>ch</b> chrome         |
|         | <b>033</b> 102"    | <b>mcgy</b> matte chrome |



## VIA Curved Track

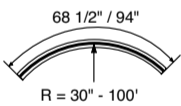
The VIA Curved Track is factory bent to specifications provided. Track may be curved horizontally or vertically into any radius from 2'6" to 100'. The VIA Curved Track consist of 2 copper pipes with galvanized surface finish in chrome, gold, bronze, or matte chrome. Center plastic insulations are black or grey.

### Technical Specs

- 300VA maximum thru-put
- 12V AC/DC rated
- Suitable for dry locations only

Ordering Code:

example: **160 - 019-3 - bz**



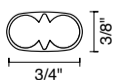
| Base    | Length                           | Finish                   |
|---------|----------------------------------|--------------------------|
| 160 VIA | <b>019-1</b> horizontal, 68-1/2" | <b>bz</b> bronze         |
|         | <b>019-2</b> horizontal, 94"     | <b>ch</b> chrome         |
|         | <b>019-3</b> vertical, 68-1/2"   | <b>mcgy</b> matte chrome |
|         | <b>019-4</b> vertical, 94"       |                          |



## VIA End Cap

Ordering Code:

example: **160020 - mcgy**



| Base           | Finish                   |
|----------------|--------------------------|
| 160020 end cap | <b>blk</b> black         |
|                | <b>mcgy</b> matte chrome |



## VIA Deburring Tool

smooths cut track ends

Ordering Code:

example: **160400**

| Part Number                  |
|------------------------------|
| <b>160400</b> deburring tool |

Job Name:

Contact:

Ordering Code:

Fixture Type:

VIA System

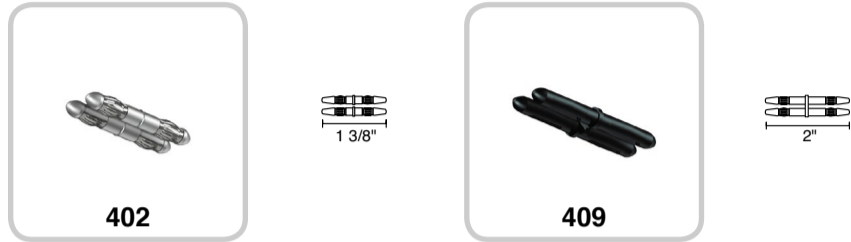
# VIA Connectors

Used to connect and redirect VIA Track

### Technical Specs

- 300VA maximum
- 12V AC/DC rated
- Suitable for dry locations only

conductive and non conductive connectors for track sections



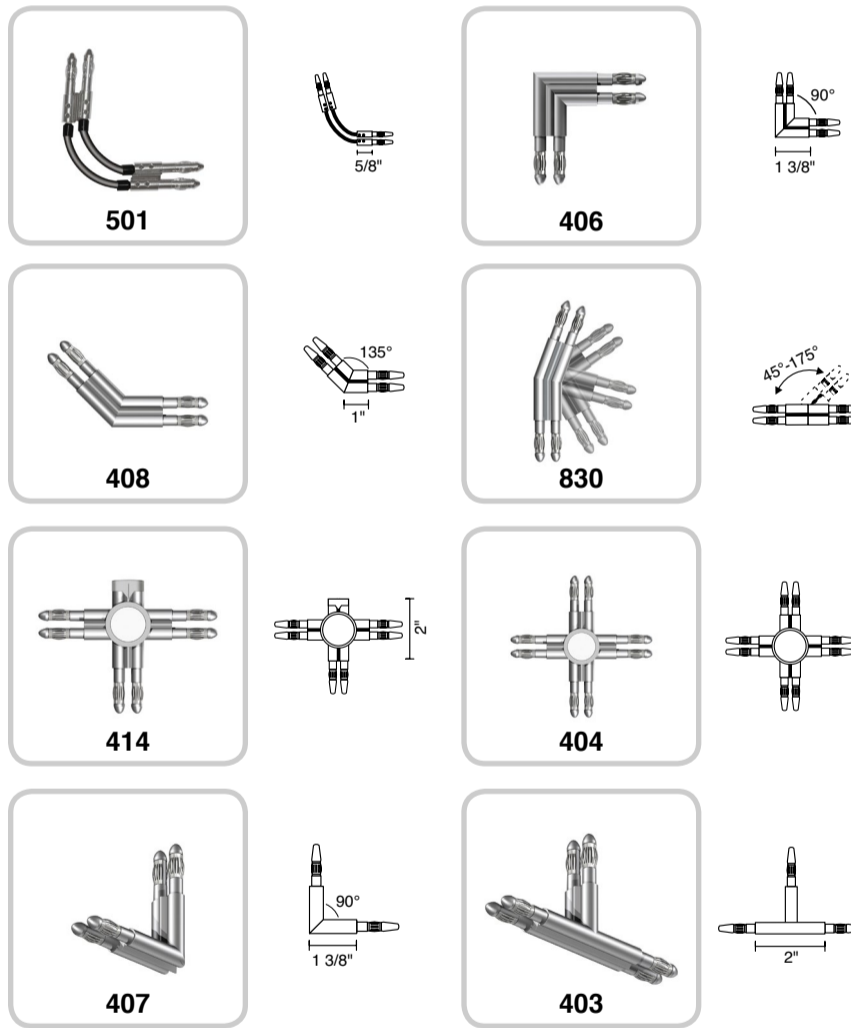
Ordering Code:

example: **160 - 409 - mcgy**

| Base | Type | Finish                  |
|------|------|-------------------------|
| 160  | VIA  | 402* internal connector |
|      |      | 409 iso connector       |
|      |      | blk black               |
|      |      | mcgy matte chrome       |

\*402 does not offer any finish options

angled conductive connectors for redirecting track sections



Ordering Code:

example: **160 - 406 - ch**

| Base | Type | Finish                                     |
|------|------|--|
| 160  | VIA  | 501 flexible track connector               |
|      |      | 406 horizontal 90° connector               |
|      |      | 408 horizontal 135° connector              |
|      |      | 830 horizontal custom 45° - 175° connector |
|      |      | 414 horizontal T-connector                 |
|      |      | 404 horizontal cross connector             |
|      |      | 407 vertical 90° connector                 |
|      |      | 403 vertical T-connector                   |
|      |      | bz bronze                                  |
|      |      | ch chrome                                  |
|      |      | mcgy matte chrome                          |

Job Name:

Contact:

Ordering Code:

Fixture Type:

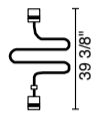
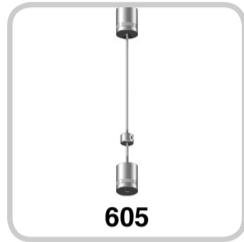
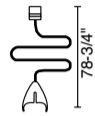
VIA System

# VIA Mounting

Technical Specs

Used to mount VIA Track to wall or ceiling

cord suspension (all suspension supports can be field shortened)



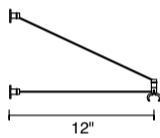
Ordering Code:

example: **160 - 600 - mcgy**

| Base | Type | Finish                   |
|------|------|--------------------------|
| 160  | VIA  | 600 cord suspension clip |
|      |      | 605* cord suspension II  |
|      |      | <b>bz</b> bronze         |
|      |      | <b>ch</b> chrome         |
|      |      | <b>mcgy</b> matte chrome |

\*605 only available in ch and mcgy

rigid supports

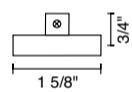


Ordering Code:

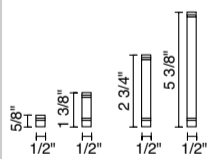
example: **160 - 560 - ch**

| Base | Type | Finish                                   |
|------|------|--|
| 160  | VIA  | 210 track spacer                         |
|      |      | 560 wall extension arm clip              |
|      |      | 518 wall and ceiling attachment clip I   |
|      |      | 519* wall and ceiling attachment clip II |
|      |      | <b>bz</b> bronze                         |
|      |      | <b>ch</b> chrome                         |
|      |      | <b>mcgy</b> matte chrome                 |
|      |      | <b>blk*</b> black                        |

\*519 available in blk only



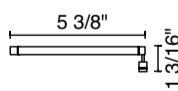
attachment clip accessories (must be used with 518 or 519 clips)  
multiple spacers may be used and combined to lengthen the support



Ordering Code:

example: **160 - 530 - mcgy**

| Base | Type | Finish                   |
|------|------|--------------------------|
| 160  | VIA  | 430 5/8" spacer          |
|      |      | 530 1-3/8" spacer        |
|      |      | 531 2-3/4" spacer        |
|      |      | 532 5-3/8" spacer        |
|      |      | <b>bz</b> bronze         |
|      |      | <b>ch</b> chrome         |
|      |      | <b>mcgy</b> matte chrome |



565\* 5/8" wall suspension I  
566\* 5-3/8" wall suspension II

533 plate disc

\*565 and 566 only available in ch and mcgy

Job Name:

Contact:

Ordering Code:

Fixture Type:

VIA System

# VIA Power Supply



## VIA Plug-In Power Feed

includes track end cap (160020)

Technical Specs:

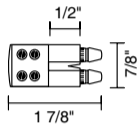
- 300VA maximum
- 12V AC/DC rated
- Suitable for dry locations only

Ordering Code:

example: **160401mcgy**

Ordering Code

|                   |              |
|-------------------|--------------|
| <b>160413blk</b>  | black        |
| <b>160401mcgy</b> | matte chrome |



## VIA Mid-Span Power Feed

includes track end cap (160020)

Technical Specs:

- 300VA maximum
- 12V AC/DC rated
- Suitable for dry locations only

Ordering Code:

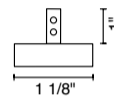
example: **160528 - bz**

Base

**160528** power feed

Finish

|             |              |
|-------------|--------------|
| <b>bz</b>   | bronze       |
| <b>ch</b>   | chrome       |
| <b>mcgy</b> | matte chrome |



## VIA Canopy Power Feed

can be field shortened, includes set of track end caps (160020)

Technical Specs:

- 300VA maximum
- 12V AC/DC rated
- Suitable for dry locations only
- Mounts over 3" - 4" round J-box

Ordering Code:

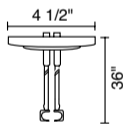
example: **160306 - ch**

Base

**160306** canopy feed

Finish

|             |              |
|-------------|--------------|
| <b>bz</b>   | bronze       |
| <b>ch</b>   | chrome       |
| <b>mcgy</b> | matte chrome |



## VIA 2" Dual Rod Power Feed Canopy

can be field shortened, includes set of track end caps (160020)

Technical Specs:

- 300VA maximum
- 12V AC/DC rated
- Suitable for dry locations only
- 2 1/4" hole cutout
- Required material thickness 3/10" - 1 1/16"
- Not thru wire rated

Ordering Code:

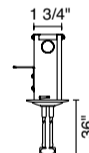
example: **160308 - bz**

Base

**160308** canopy feed

Finish

|             |              |
|-------------|--------------|
| <b>bz</b>   | bronze       |
| <b>ch</b>   | chrome       |
| <b>mcgy</b> | matte chrome |



## VIA 150W Direct Feed Transformer

Technical Specs:

- 150VA maximum (20VA minimum)
- 120V AC, 50/60Hz input
- 11.7V AC output
- Suitable for dry locations only
- Mount to 3" - 4" round J-box
- Dimmable

Ordering Code:

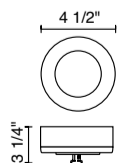
example: **240330 - mcgy**

Base

**240330** transformer

Finish

|           |              |
|-----------|--------------|
| <b>bz</b> | bronze       |
| <b>ch</b> | chrome       |
| <b>mc</b> | matte chrome |



## VIA Direct Feed Transformer

available with or without cover

Technical Specs:

- 300VA maximum (50VA minimum)
- 120V AC, 50/60Hz input
- 11.7V AC output
- Suitable for dry locations only
- Mount to 3" - 4" round J-box
- Dimmable

Ordering Code:

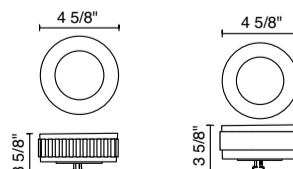
example: **240326 - mc**

Base

|               |                      |
|---------------|----------------------|
| <b>240325</b> | transformer          |
| <b>240326</b> | transformer w/ cover |

Finish

|           |              |
|-----------|--------------|
| <b>bz</b> | bronze       |
| <b>ch</b> | chrome       |
| <b>mc</b> | matte chrome |



Job Name:

Contact:

Ordering Code:

Fixture Type:

VIA System

# VIA Adapters



## VIA Uni-Plug Adapter

Step down adapter for Bruck low-voltage fixtures.

### Technical Specs

- 70 Watt maximum for halogen
- 70VA maximum for LED
- 12V AC/DC rated
- Suitable for dry locations only

Ordering Code:

example: **160050 - mcgy**

| Base                  | Finish   |
|-----------------------|--|
| <b>160050</b> adapter | <b>bz</b> bronze<br><b>ch</b> chrome<br><b>mcgy</b> matte chrome |



## VIA 45° Uni-Plug Adapter

Step down adapter for Bruck low-voltage fixtures.

### Technical Specs

- 70 Watt maximum for halogen
- 70VA maximum for LED
- 12V AC/DC rated
- Suitable for dry locations only
- Adjustable from 0° - 45°

Ordering Code:

example: **160051 - bz**

| Base                      | Finish   |
|---------------------------|--|
| <b>160051</b> 45° adapter | <b>bz</b> bronze<br><b>ch</b> chrome<br><b>mcgy</b> matte chrome |

