

MODELS HRV650 & HRV1150 LIGHT COMMERCIAL HEAT RECOVERY VENTILATOR

FEATURES

BLOWER:

- Fresh and stale air streams are isolated from each other to prevent mixing of stale air with fresh air
- High pressure, centrifugal blower accommodates many ducting configurations
- Balanced centrifugal blower wheels for quiet operation and long motor life
- Two permanently lubricated, 115 VAC, 60 Hz, Permanent Split Capacitor (PSC) three-speed motors designed for continuous operation

HOUSING:

- Rugged steel housing with corrosion-resistant finish
- Built-in defrost mechanism prevents freeze-ups
- Every part is removable in less than five minutes
- Square inlets and outlets for easy duct connections
- All inside surfaces covered with foil-faced thermal/acoustic insulation
- Easily removable, reticulated, washable foam filters (20 pores/inch)
- Rubber straps hang the unit
- Built-in drain tube connection

CONTROLS:

- Off/Low/High switch on side of unit
- Provisions for low voltage control
- Fully enclosed, modular controls mounted to outside of cabinet for improved reliability and easy servicing

CORE:

- Non-enthalpic core transfers energy without moisture vapor transfer
- Easily removable for cleaning and replacement - no tools required
- Material is U.L. flammability classified 94 HB.

TYPICAL SPECIFICATIONS

The Heat Recovery Ventilator shall be Broan-NuTone Model HRV650 (Model HRV1150).

Rated air flow shall be 650 (1150) cfm at 0.4 in. wg.

Unit to include easily-removable energy recovery core - no tools should be required to remove.

Fresh air and stale air streams to be isolated from each other to prevent mixing of stale air with fresh air.

Built-in defrost mechanism to be provided to prevent freeze-ups.

Provisions for mounting the unit to the ceiling joists to be provided.

Every part shall be removable in less than five minutes.

All interior surfaces to be covered with foil-faced thermal/acoustic insulation.

Unit shall include easily removable, washable air filters. No tools are to be required for filter cleaning/replacement.

The controls are to be mounted outside of the unit and include an off/low/high switch and provisions for low voltage controls.

Unit to accommodate square duct.

Blower shall be designed for continuous operation using two permanently lubricated, PSC (Permanent Split Capacitor) motors and balanced centrifugal blower wheels.

Unit to be ETL listed and cETL certified.

		HRV650	HRV1150
Electrical	Voltage	115 vac	115 vac
	Power	640 watts	1275 watts
	Max fuse rating	5.7 amps	11.7 amps
Weight	Net	148 lbs	186 lbs
	Shipping weight	188 lbs	226 lbs



Broan-NuTone LLC, 926 West State Street, Hartford, Wisconsin 53027 (1-800-637-1453)

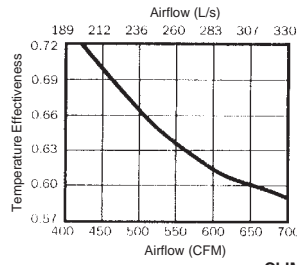
REFERENCE	QTY.	REMARKS	Project
			Location
			Architect
			Engineer
			Contractor
			Submitted by Date

PERFORMANCE RATINGS

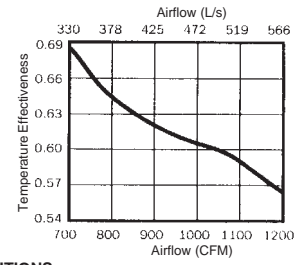
MODELS HRV650 & HRV1150 HEAT RECOVERY VENTILATOR

Option Installed: Defrost

HRV650 EFFICIENCY



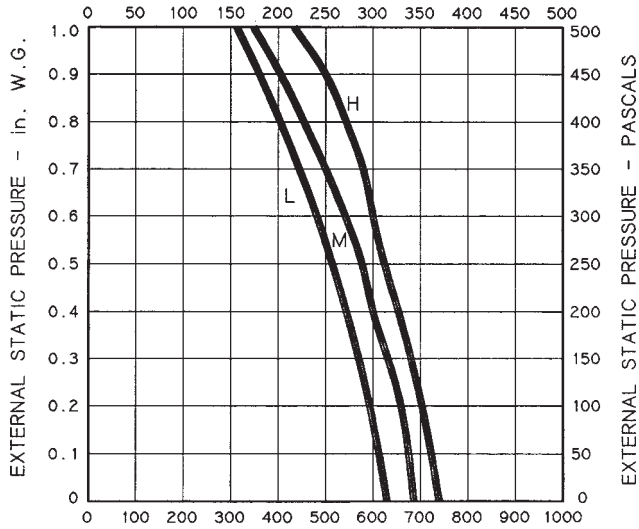
HRV1150 EFFICIENCY



CLIMATE CONDITIONS
Indoor air @ 22°C (72°F), 50% RH
Outdoor air @ 0°C (32°F), 0% RH

HRV650 VENTILATION

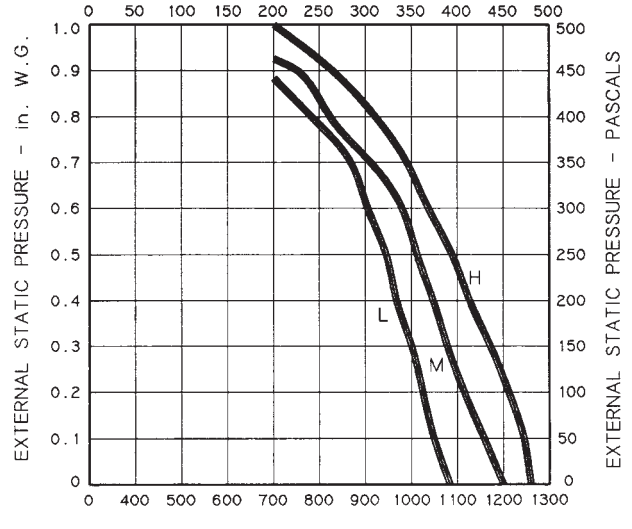
AIR FLOW - L/s



AIR FLOW - CFM

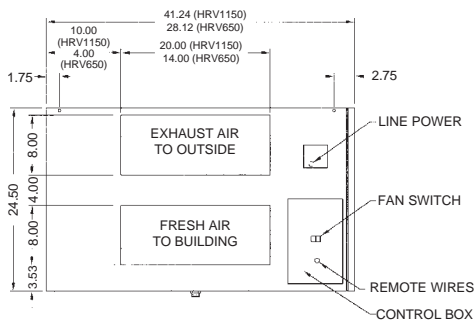
HRV1150 VENTILATION

AIR FLOW - L/s

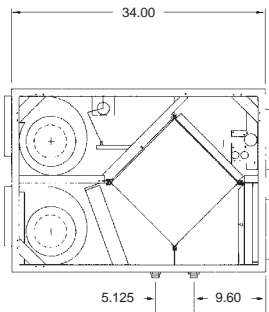


AIR FLOW - CFM

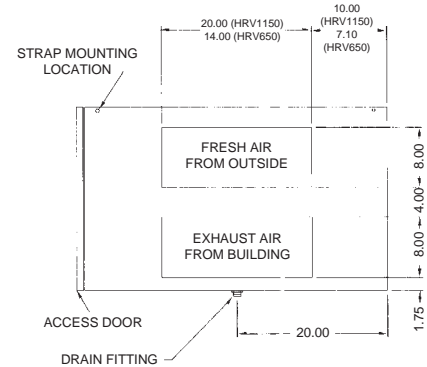
LEFT VIEW



FRONT VIEW

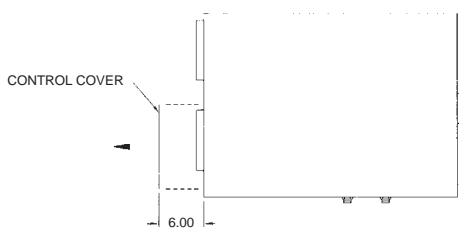


RIGHT VIEW

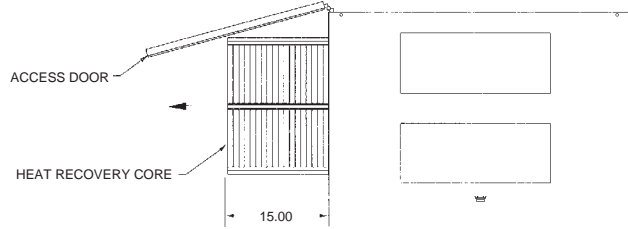


NOTE: These models have a damper located on the outdoor intake connection. This damper will close in defrost or when the unit is placed in the "off" position with power maintained to the unit. This damper is not designed as a backdraft damper and will remain open if power is disconnected to the unit for any reason.

ALL MEASUREMENTS ARE IN INCHES



A minimum of 6.00" clearance from any obstruction is required for removal of control box.



A minimum of 15.00" clearance from any obstruction is required for removal of heat recovery cores, fans, etc. The access door can be removed from cabinet with only 2.00" of clearance.