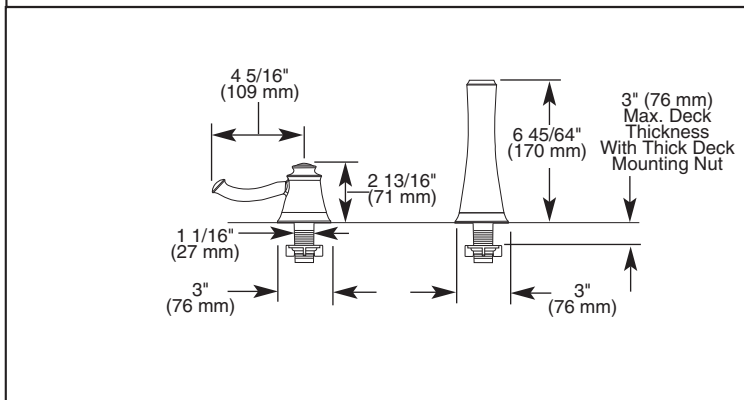
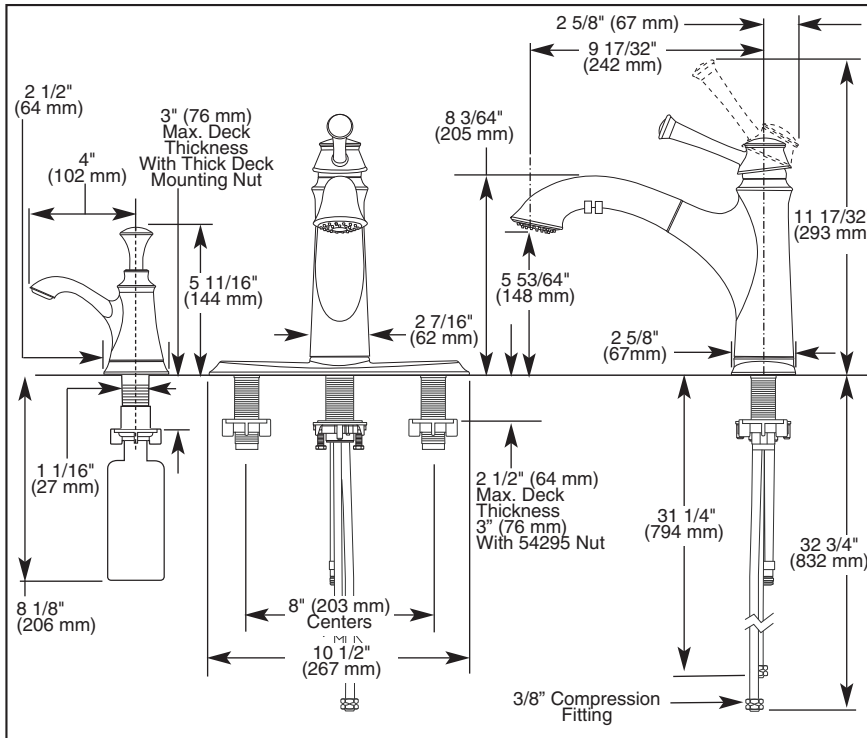


Submitted Model No.: \_\_\_\_\_

Specific Features: \_\_\_\_\_



▲ Designate proper finish suffix

# BRIZO®

## KITCHEN FAUCETS

- Baliza® Pull-Out Series
- Single Handle Deck Mount
- 1,2,3 or 4 Hole Sink Applications
- Quick Snap® Hose Installation

### STANDARD SPECIFICATIONS:

- Single handle kitchen faucets for exposed mounting on 1, 2, 3, or 4 hole sinks.
- Solid brass fabricated body.
- Centermount or 8" (203 mm) centers with optional included 10 13/16" (275 mm) long escutcheon.
- 8 3/64" (205 mm) high, 9 17/32" (242 mm) long spout, swings 120°.
- Spout is connected to valve body with a 59" (1524 mm) long hose that extends to 38" (965 mm) usable length.
- Pull-out spray operates in an aerated or spray mode, with volume control and pause, via easy push toggle buttons.
- Control mechanism - 32mm ceramic disc cartridge with metal stem.
- Red/blue graphics under handle button indicates hot/cold temperature.
- Quick Snap® hose installation.
- Touch-Clean® sprayhead.
- 3/8" O.D. straight, staggered pex supply tubes.
- Integral double check valves in spout.
- Mounts in standard 1 3/8" dia. holes.
- Max. 1.8 gpm @ 60 PSI, 6.8 L/min @ 414 kPa

### WARRANTY

- Lifetime limited warranty on parts (other than electronic parts and batteries) and finishes: or, for commercial users, for 5 years from date of purchase.
- 5 year limited warranty on electronic parts (other than batteries); or, for commercial users, for 1 year from the date of purchase. No warranty is provided on batteries.

### COMPLIES WITH:

- ASME A112.18.1 / CSA B125.1



Indicates compliance to ICC/ANSI A117.1

Verified to <0.25% Pb average wetted surface regulations.