

## NOTE:

1. PART NO. HAS SUFFIX "B" OR "W" (BLACK OR WHITE).

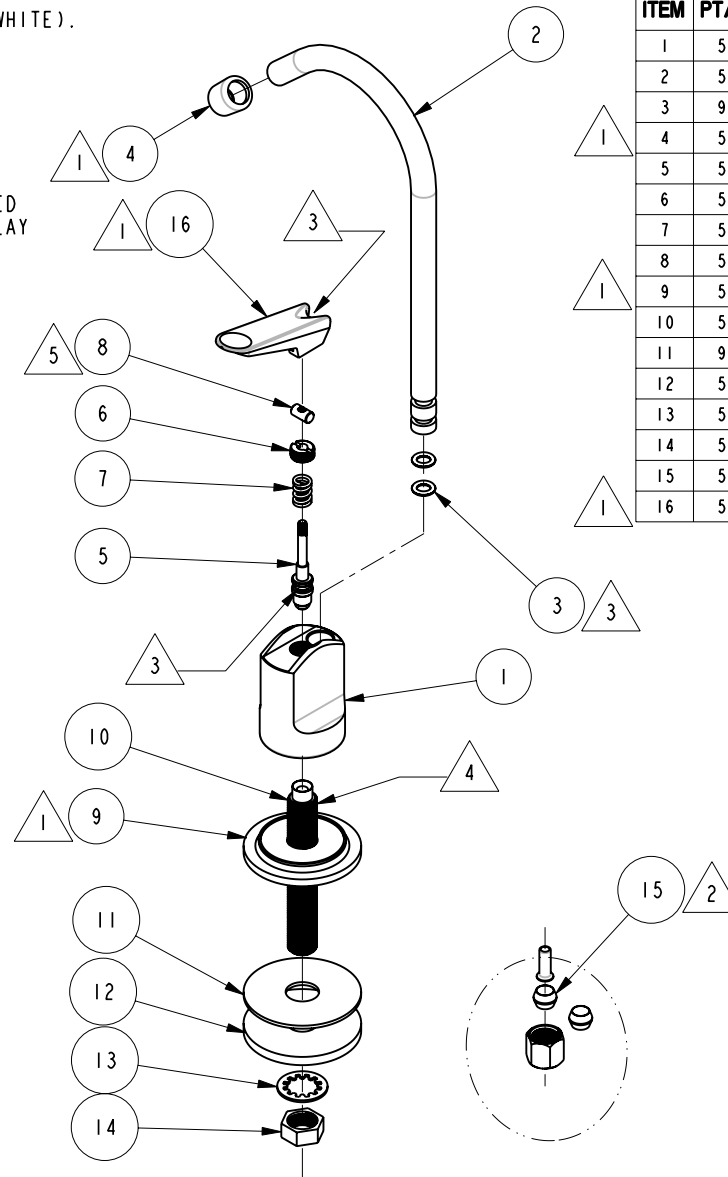
2. BAG 5-007 IN A SEPARATE BAG.

3. APPLY SUPER LUBE GREASE OR EQUIVALENT.

4. APPLY LOCTITE 680 OR EQUIVALENT.

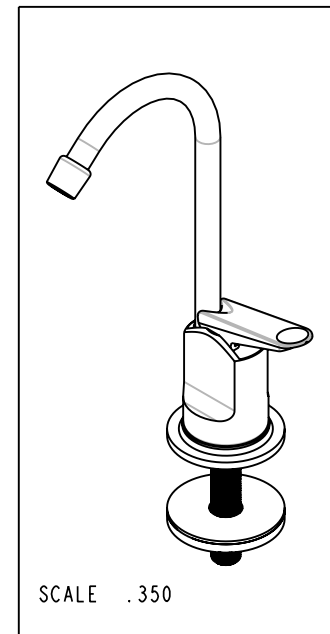
5. ASSEMBLY HEIGHT OF ITEM SHALL BE DETERMINED BY WATER TEST. HANDLE SHALL HAVE SLIGHT PLAY (MOVEMENT UP AND DOWN).

6. WATER TEST WHOLE UNIT.



## BILL OF MATERIAL (CURRENT LEVEL)

ITEM	PT/ASSY	DESCRIPTION	TYPE	QTY.
1	50057	BODY	PART	1
2	50058	SPOUT	PART	1
3	91099	O-RING #2-009	PART	2
4	50061	SPOUT TIP	PART	1
5	5-003	VALVE STEM ASM	ASSEMBLY	1
6	50073	VALVE RETAINING NUT	PART	1
7	50071	COMPRESSION SPRING	PART	1
8	50074	T-BAR	PART	1
9	50059	FLANGE	PART	1
10	50062	NIPPLE	PART	1
11	91119	GASKET	PART	1
12	50063	MOUNTING WASHER	PART	1
13	50064	LOCKING TOOTH WASHER	PART	1
14	50065	7/16-24 NUT	PART	1
15	5-007	1/4 COMP KIT	ASSEMBLY	1
16	50060	HANDLE	PART	1



COPYRIGHT 2005 BRASSTECH, INC. THESE DRAWINGS AND THE DESIGNS DEPICTED HEREIN ARE THE PROPRIETARY PROPERTY OF BRASSTECH. ANY USE OR REPRODUCTION IS SUBJECT TO THE EXPRESS APPROVAL OF BRASSTECH. UNAUTHORIZED USE IS STRICTLY PROHIBITED. ALL RIGHTS RESERVED.

**BRASSTECH**  
INCORPORATED  
2001 E. CARNEGIE AVE.  
SANTA ANA, CA 92705  
(949) 417-5207

## WATER DISPENSER FAUCET

ASSY. NO.

105

A

EO-0777

10/23/06

-

RELEASE

PRE-95'

SCALE .350

REF. -

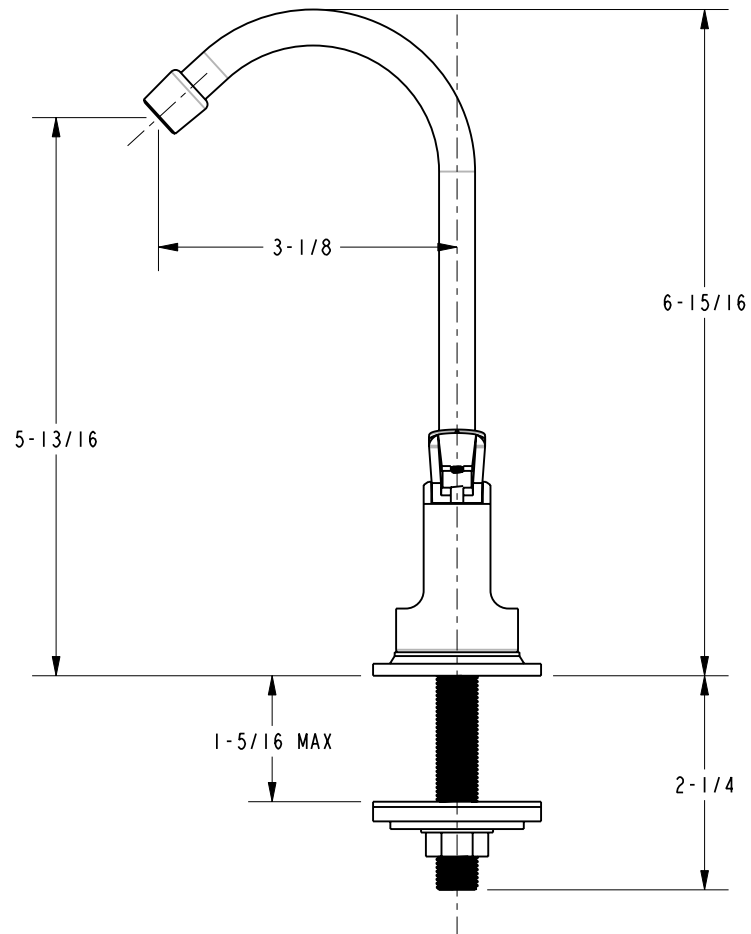
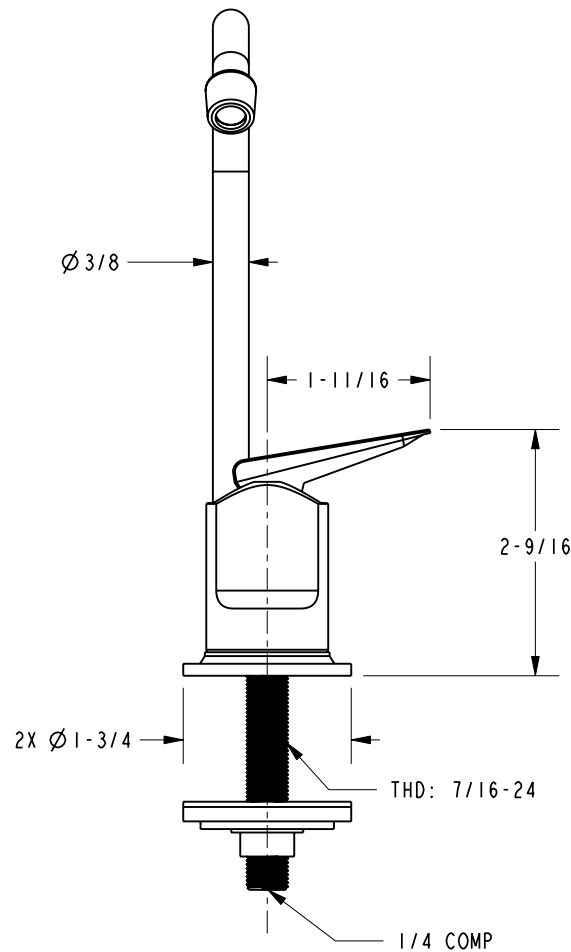
SHEET 1 OF 2

REV

REV DESC

DATE

# SPECIFICATION DWG



DIMENSIONS ARE IN INCHES AND AN APPROXIMATION OF A TYPICAL INSTALLATION

COPYRIGHT 2005 BRASSTECH, INC. THESE DRAWINGS AND THE DESIGNS DEPICTED HEREIN ARE THE PROPRIETARY PROPERTY OF BRASSTECH. ANY USE OR REPRODUCTION IS SUBJECT TO THE EXPRESS APPROVAL OF BRASSTECH. UNAUTHORIZED USE IS STRICTLY PROHIBITED. ALL RIGHTS RESERVED.

<b>BRASSTECH</b>		2001 E. CARNEGIE AVE. SANTA ANA, CA 92705 (949) 417-5207	
INCORPORATED			
DWG NO.	105	REF.	REV A
SCALE	.500	SHEET	2 OF 2