

BILL OF MATERIAL (CURRENT LEVEL)

ITEM	PT/ASSY	DESCRIPTION	TYPE	QTY.
1	50296	BODY (287)	PART	1
2	50297	HOLDER - HAND SHOWER	PART	1
3	50298	PIVOT BALL	PART	1
4	50299	COLLAR NUT	PART	1
5	50300	SPRING - 5/8"	PART	1
6	50301	WASHER - FLARED	PART	1
7	91165	WALL ANCHOR PLASTIC	PART	1
8	92070	WOOD SCREW, #14 X 2" SS	PART	1

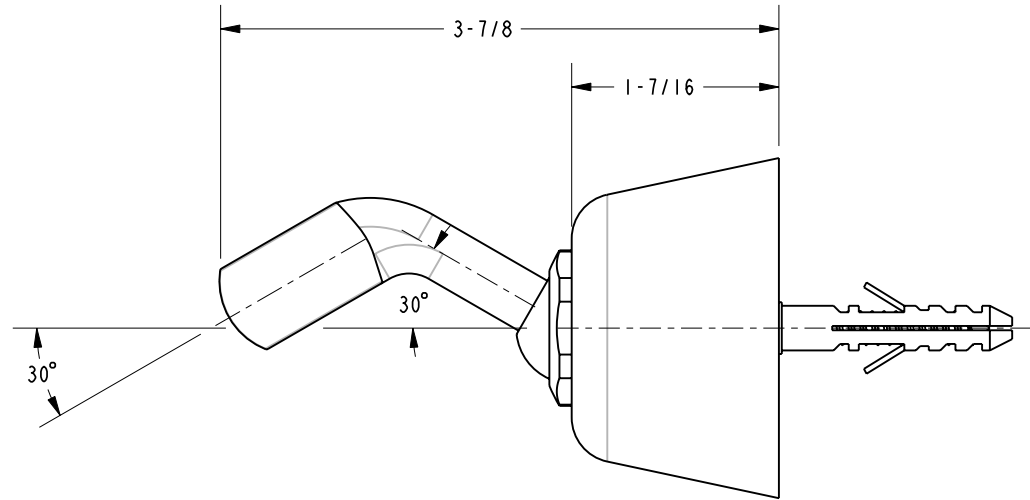
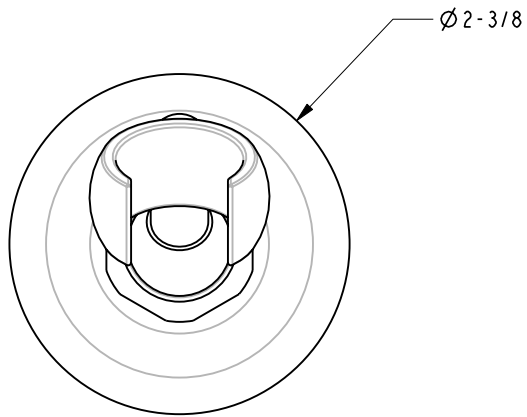
COPYRIGHT 2005 BRASSTECH, INC. THESE DRAWINGS AND THE DESIGNS DEPICTED HEREIN ARE THE PROPRIETARY PROPERTY OF BRASSTECH. ANY USE OR REPRODUCTION IS SUBJECT TO THE EXPRESS APPROVAL OF BRASSTECH. UNAUTHORIZED USE IS STRICTLY PROHIBITED. ALL RIGHTS RESERVED.

BRASSTECH
INCORPORATED
2001 E. CARNEGIE AVE.
SANTA ANA, CA 92705
(949) 417-5207

COMPL. BRACKET - HANDSHOWER

ASSY. NO. 287			A	EO-0093	1/17/03
SCALE 0.750			-	RELEASED	1/8/02
REF. -	SHEET 1 OF 2	REV	REV	DESC	DATE

SPECIFICATION DWG



DIMENSIONS ARE IN INCHES AND AN APPROXIMATION OF A TYPICAL INSTALLATION

COPYRIGHT 2005 BRASSTECH, INC. THESE DRAWINGS AND THE DESIGNS DEPICTED HEREIN ARE THE PROPRIETARY PROPERTY OF BRASSTECH. ANY USE OR REPRODUCTION IS SUBJECT TO THE EXPRESS APPROVAL OF BRASSTECH. UNAUTHORIZED USE IS STRICTLY PROHIBITED. ALL RIGHTS RESERVED.

BRASSTECH		2001 E. CARNEGIE AVE. SANTA ANA, CA 92705 (949) 417-5207	
INCORPORATED			
DWG NO.	287	REF.	REV A
SCALE	0.750	SHEET	2 OF 2