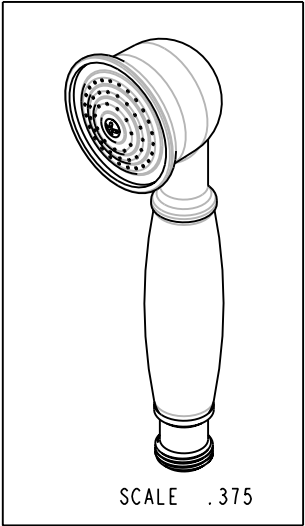
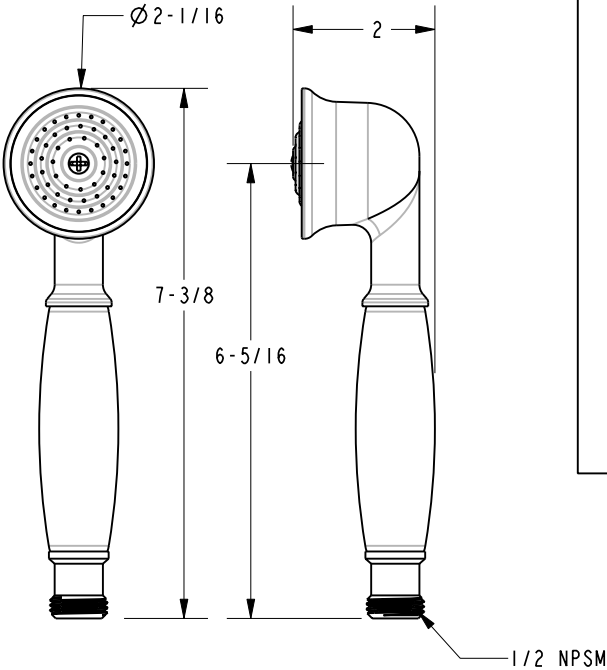
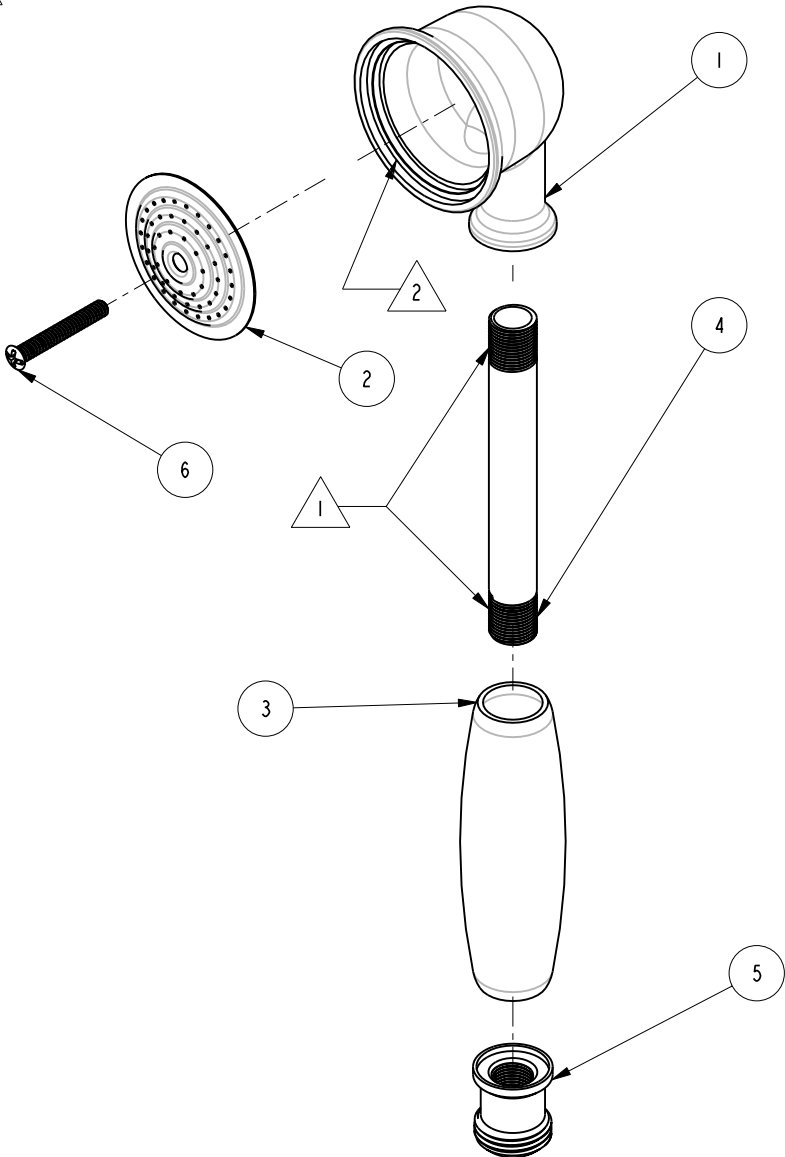


NOTES:

1. APPLY ADHESIVE LOCTITE 680 OR EQUIVALENT.
2. APPLY 3M DP-100 NS EPOXY ADHESIVE OR EQUIVALENT.

BILL OF MATERIAL (CURRENT LEVEL)

ITEM	PT/ASSY	DESCRIPTION	TYPE	QTY.
1	50280	HANDSHOWER	PART	1
2	50628	FACEPLATE (HND SHWR)	PART	1
3	50281	HANDLE, SMOOTH, HAND SHOWER	PART	1
4	50283	NIPPLE 1/2 X 4	PART	1
5	50282	ADAPTER FOR HOSE	PART	1
6	92068	SCREW 10-24X 1-3/8	PART	1



COPYRIGHT 2005 BRASSTECH, INC. THESE DRAWINGS AND THE DESIGNS DEPICTED HEREIN ARE THE PROPRIETARY PROPERTY OF BRASSTECH. ANY USE OR REPRODUCTION IS SUBJECT TO THE EXPRESS APPROVAL OF BRASSTECH. UNAUTHORIZED USE IS STRICTLY PROHIBITED. ALL RIGHTS RESERVED.

BRASSTECH
INCORPORATED
2001 E. CARNEGIE AVE.
SANTA ANA, CA 92705
(949) 417-5207

HANDSHOWER ASM

ASSY. NO.
281

SCALE .500	REF. -	SHEET OF	REV	REV DESC	DATE
------------	--------	------------	-----	----------	------

B	EO-0695	8/11/06
A	REF.EO-0073	02/17/03
-	RELEASED	PRE '95