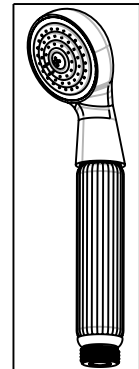
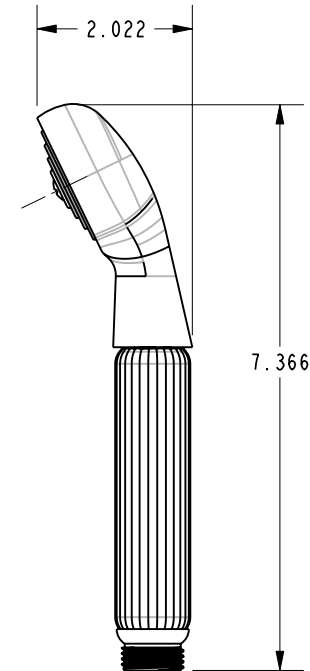
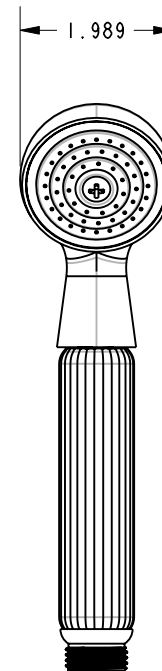
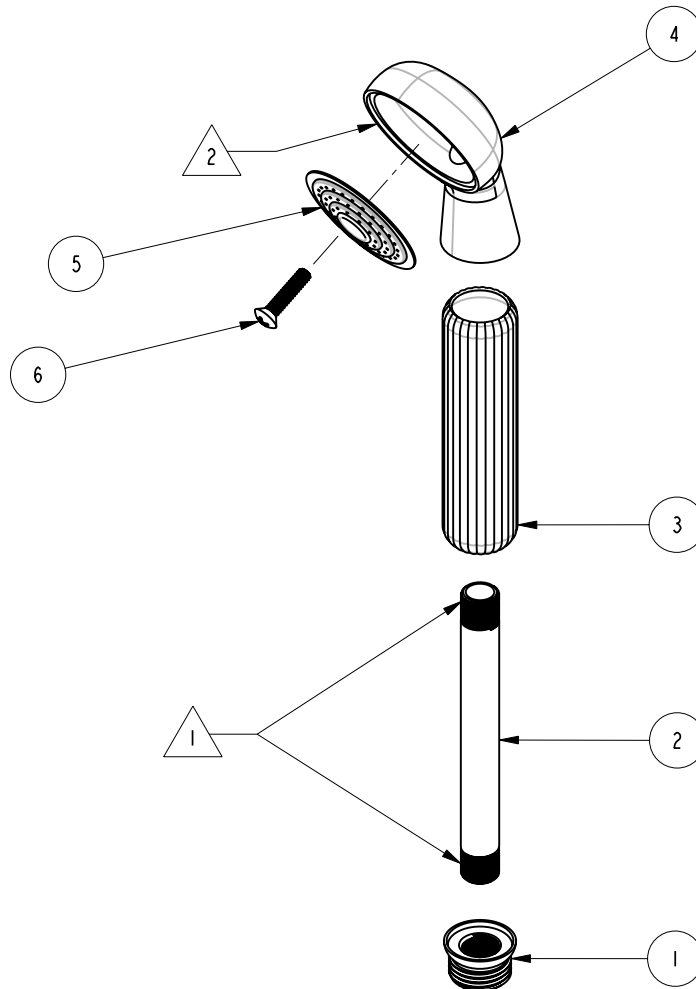


NOTES:

1. APPLY ADHESIVE LOCTITE 680 OR EQUIVALENT.  
 2. APPLY 3M DP-100 NS EPOXY ADHESIVE OR EQUIVALENT.

BILL OF MATERIAL (CURRENT LEVEL)

ITEM	PT/ASSY	DESCRIPTION	TYPE	QTY.
1	50278	ADAPTER HOSE	PART	1
2	50279	NIPPLE FOR HAND SHOWER	PART	1
3	50277	GROOVED HANDLE	PART	1
4	50275	BODY	PART	1
5	50276	FACEPLATE (HND SHWR)	PART	1
6	92253	SCREW 10-24X.830 BRS	PART	1



SCALE 0.250

COPYRIGHT 2005 BRASSTECH, INC. THESE DRAWINGS AND THE DESIGNS DEPICTED HEREIN ARE THE PROPRIETARY PROPERTY OF BRASSTECH. ANY USE OR REPRODUCTION IS SUBJECT TO THE EXPRESS APPROVAL OF BRASSTECH. UNAUTHORIZED USE IS STRICTLY PROHIBITED. ALL RIGHTS RESERVED.

**BRASSTECH**  
 INCORPORATED  
 2001 E. CARNEGIE AVE.  
 SANTA ANA, CA 92705  
 (949) 417-5207

HAND SHOWER WITH GROOVE

ASSY. NO. 280

SCALE 0.400 REF. - SHEET 1 OF 1 REV REV DESC DATE

B	EO-0869	08/15/07
A	EO-0695	8/11/06
-	RELEASED	PRE '95
REV	REV DESC	DATE