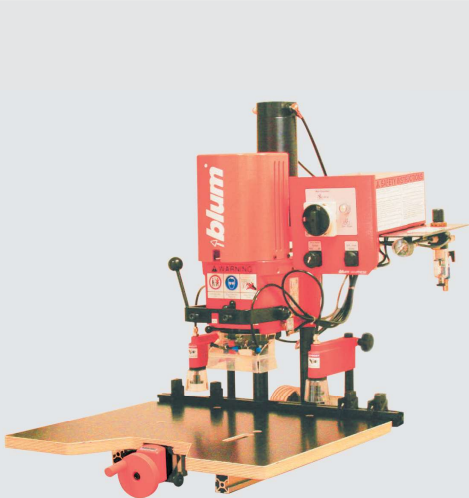


**MINIPRESS P – Deluxe boring and insertion machine**



- Front adjustable boring distance with digital counter
- Pneumatic hold-down clamps
- Boring depth adjustment
- Ruler stops (qty 4)
- Tool kit included
- Dust collection attachment
- Optional laser center line set
- Accepts new 8 or 9 spindle heads

Part no.

Single phase – 220V power

**M53.1053\*US**

Three-phase – 220V power

**M53.1004\*US**

**MINIPRESS M – 110V manual boring and insertion machine**



- 110V power with molding plug (portable)
- Does not require pressurized air
- Ruler stops (qty 4)
- Tool kit included
- Dust collection attachment
- Accepts new 8 or 9 spindle heads

Part no.

Single phase – 110V power

**M52.1056\*US**

**MINIDRILL P – Standard boring machine**



- Front adjustable boring distance
- Ruler stops (qty 4)
- Tool kit included
- Dust collection attachment
- Optional laser center line, digital counter and hold down clamps sets
- Accepts new 8 or 9 spindle heads

Part no.

Single phase – 220V power

**M53.1053\*50**

## 9 spindle head



**NOTE:** Requires 5 each left hand and 4 each right hand drill bits. Recommended drill bit size for quick disconnect chucks: overall length is 57 mm and shank is 10 mm in diameter and 27 mm in length.

- 9 spindle head for use with MINIPRESS/MINIDRILL M53
- Bores nine holes spaced 32 mm apart, parallel to the fence
- Quick-disconnect chucks
- Once aligned, does not require additional adjustment
- Bores cabinet side panel for 32 mm system boring for Blum mounting plates and runners
- Requires retrofit set for use with machines produced in 2009 or prior

**Includes:**

- Ø3 mm allen wrench
- Distance spacer
- Drive pin
- Air hose

Part no.

9 spindle head	<b>MZK.190S</b>
Chuck cover cap	<b>M30.1329</b>

## 8 spindle head



**NOTE:** Requires 4 each left hand and 4 each right hand drill bits. Recommended drill bit size for quick disconnect chucks: overall length is 57 mm and shank is 10 mm in diameter and 27 mm in length.

- 8 spindle head for use with MINIPRESS/MINIDRILL M53
- Bores eight holes spaced 32 mm apart, perpendicular to the fence
- Quick-disconnect chucks
- Once aligned, does not require additional adjustment
- Bores all Box systems front fixing brackets/galleries
- Bores cabinet side panels for all Blum runner systems
- Requires retrofit set for use with machines produced in 2009 or prior

**Includes:**

- Ø3 mm allen wrench
- Distance spacer
- Drive pin
- Air hose

Part no.

8 spindle head	<b>MZK.880S</b>
Chuck cover cap	<b>M30.1329</b>

## Spindle head retrofit set



- Required for attachment of 9 and 8 spindle heads to MINIPRESS/MINIDRILL produced in 2009 and prior
- Previous boring heads MZK.1000.US and MZK.8000.US cannot be used with the retrofit set

**Set includes:**

- 1** Adapter ring and shield
- 2** Ø5 mm allen wrench
- 3** Mounting bolts (qty 4)
- 4** Alignment pins (qty 2)
- 5** Alignment template
- 6** 13 mm fixed depth stop (qty 2)

Part no.

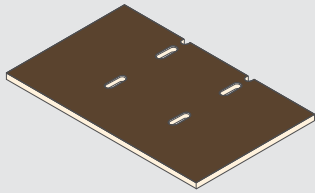
Spindle head retrofit set	<b>M30.1313.UM</b>
---------------------------	--------------------

# Hinges



# Machine Accessories

## Work table for M51 machine

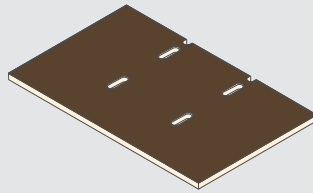


Part no.

Work table

**MZA.1000**

## Work table for M52 machine

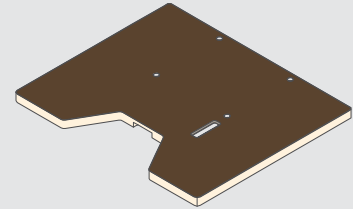


Part no.

Work table

**MZA.5200**

## Work table for M53 machine



Part no.

Work table

**MZA.5300**

## Center ruler

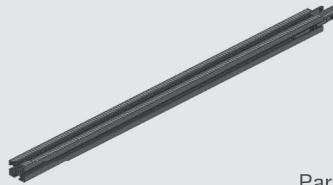


Part no.

Center ruler, 600 (2')

**M30.0212**

## Extension ruler



Part no.

Extension ruler, 1250 (4')

**MZL.1250.US**

## Extension ruler support



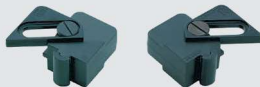
Part no.

Extension ruler support

**MZV.2100**

## Ruler stop

- Left or right ruler stop



Part no.

Ruler stop

**MZS.3000**

## Small ruler stop

- Left or right ruler stop



Part no.

Small ruler stop

**MZS.2000**

## Large ruler stop

- Symmetrical ruler stop



Part no.

Large ruler stop

**MZS.1000**

## Fixed depth stop

- 13 (1/2") fixed depth stop for use with M51N and M51P machines (T-shaped)



Part no.

Fixed depth stop

**M30.1304.01**

## Fixed depth stop

- 13 (1/2") fixed depth stop for use with M53. machines



Part no.

Fixed depth stop

**M30.1304.02**

## Digital counter set

- For MINIPRESS P and MINIDRILL



Part no.

Digital counter set

**MZE.2110**

## Hold down clamp set

- For use with MINIPRESS, MINIDRILL, M51P and M53.



Part no.

Hold down clamp set

**M53.0720.US**

## Laser center point set



Part no.

Laser center point set

**MZR.5300.US**

## Breakaway clutch

- For use with M51P and M53. machines



Part no.

Breakaway clutch

**MZK.2009**

**Euro hinge insertion ram**

- Can be used for inserting CLIP top BLUMOTION, CLIP top and CLIP press-in hinges
- Not for use with wide angled or specialty hinges



**NOTE:** Can be used with CLIP top BLUMOTION 95°, CLIP top 95° and CLIP 100° by adjusting the ball plungers

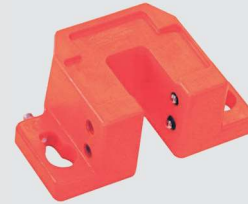
Part no.

#10 insertion ram

**MZM.0010.01**

**Euro hinge insertion ram**

- Can be used for inserting Blum wide angle press-in hinges



Part no.

#18 insertion ram

**MZM.0018**

**Euro hinge insertion ram**

- Can be used for inserting most Blum press-in Euro hinges



**NOTE:** Not for use with 170°, 155° and 125° wide angle hinges

Part no.

#40 insertion ram

**MZM.0040**

**COMPACT hinge insertion ram**

- Can be used for inserting all Blum COMPACT press-in hinges

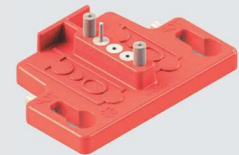


#47 insertion ram

**MZM.0047**

**Mounting plate insertion Ram**

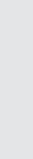
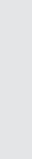
- MINIPRESS insertion ram for press-in, in-line mounting plate 177H3100



#53 insertion ram

**MZM.0053**

**Machine drill bits**



Ø5 mm

Ø8 mm

Ø10 mm

Ø35 mm

Part no.

Ø5 mm drill bit (right handed)

**M01.ZB05.D2 R**

Ø5 mm drill bit (left handed)

**M01.ZB05.D3 L**

Ø8 mm drill bit (left handed)

**M01.ZB08.03 L**

Ø10 mm drill bit (right handed)

**M01.ZB10.02 R**

Ø10 mm drill bit (left handed)

**M01.ZB10.03 L**

Ø10 mm drill bit for mineral composites/HPL (right handed)

**M01.ZB10.T2 R**

Ø10 mm drill bit for mineral composites/HPL (left handed)

**M01.ZB10.T3 L**

Ø20 mm drill bit (right handed)

**M01.ZB20.02 R**

Ø35 mm drill bit (right handed)

**M01.ZB35.02 R**

**NOTE:** Machine drill bits need to be set to 57 mm in length to achieve proper bore depth.

**Twist drill bits – high speed steel**



VPB-5



Twist drill bit



\*Chuck for DB-2 mm

Part no.

VPB-5 centering bit

**VPB-5**

Ø2 mm left

**DB-2mm**

Ø2.5 mm right

**DB-2.5mm**

Ø5 mm right

**DB-5mm**

Ø8 mm right

**DB-8mm**

Ø10 mm right

**DB-10mm**

\*Used to pilot bore for screw-on hinges with MINIPRESS or MINIDRILL

Ø10 mm chuck for DB-2 mm

**DB-10 x 2mm**