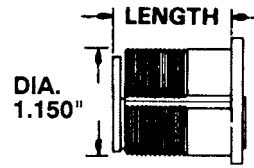


Mortise Cylinder

Length of Mortise Cylinders: The length of a Baldwin cylinder is the measurement from the back edge of the cylinder cap to the outer surface of the cam as illustrated.

Item Number C(03) Keyway	Cylinder Length	Door Thickness
8324	1 $\frac{3}{8}$ " (35mm)	1 $\frac{3}{4}$ "
8325	1 $\frac{1}{2}$ " (38mm)	2"
8326	1 $\frac{5}{8}$ " (41mm)	2 $\frac{1}{2}$ "
8327	1 $\frac{3}{4}$ " (44mm)	2 $\frac{3}{4}$ " - 3"
8328	2" (51mm)	3"



8324.XXX
8325.XXX
8326.XXX
8327.XXX
8328.XXX

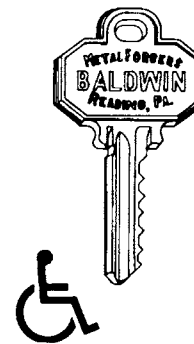
Features: Baldwin 6 pin precision mortise cylinders are made of solid extruded brass. Finish is applied to cap only. When ordered separately, cylinders are supplied with 2 nickel silver keys.

Keying Requirements: Available as keyed alike when specified.

Ordering Instructions: Standard Mortise Cylinder: All orders are provided with correct cylinder length (established by the appropriate door thickness).

Weight Each: .3 lb. (.14kg)

NOTE: Refer to the existing Baldwin Hardware Catalog to reference cylinder and keying details.



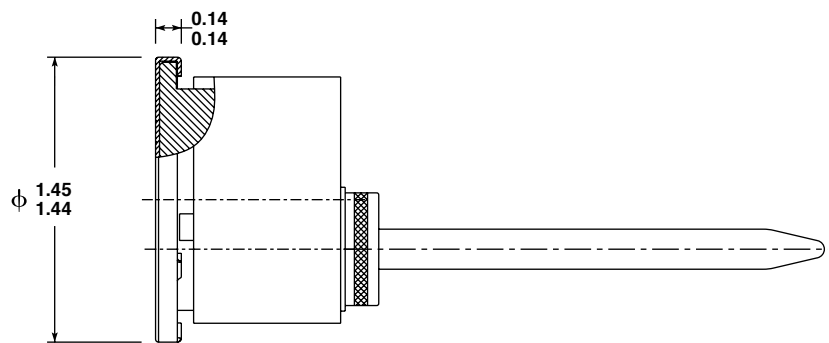
Tubular Cylinder

Features: Baldwin 5 pin precision tubular cylinders are made of solid extruded brass. Finish is applied to cap only. When ordered separately, cylinders are supplied with 2 nickel silver keys.

Keying Requirements: Available as keyed alike when specified.

Ordering Instructions: Standard Tubular Cylinder: Fits all door thicknesses 1 $\frac{3}{4}$ " - 2 $\frac{1}{4}$ ".

Weight Each: .3 lb. (.14kg)



8031.XXX.KD22

