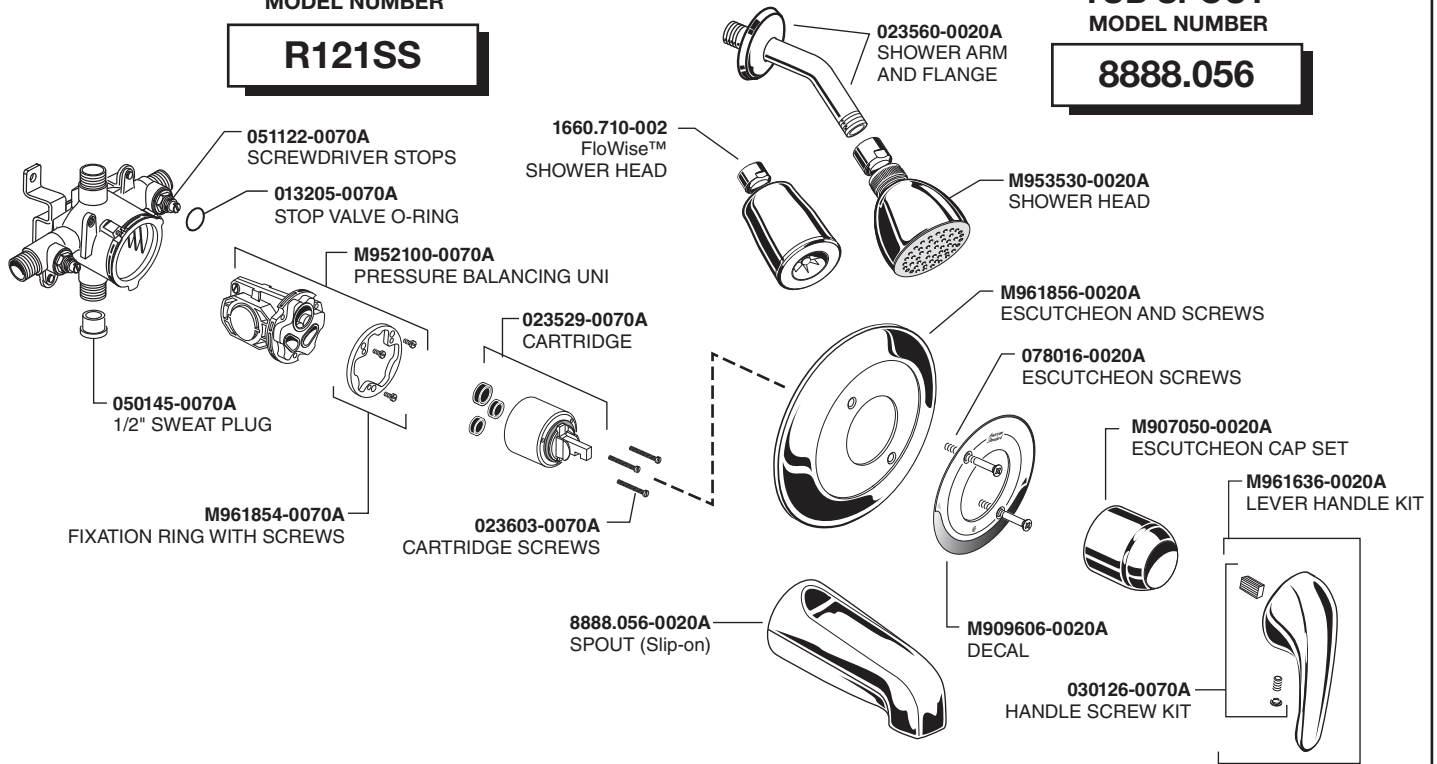


American Standard

PRESSURE BALANCE TEMPERATURE/VOLUME CONTROL VALVE

MODEL NUMBER

R121SS



COLONY SOFT SHOWER TRIM

MODEL NUMBER

T675.501

TUB SPOUT

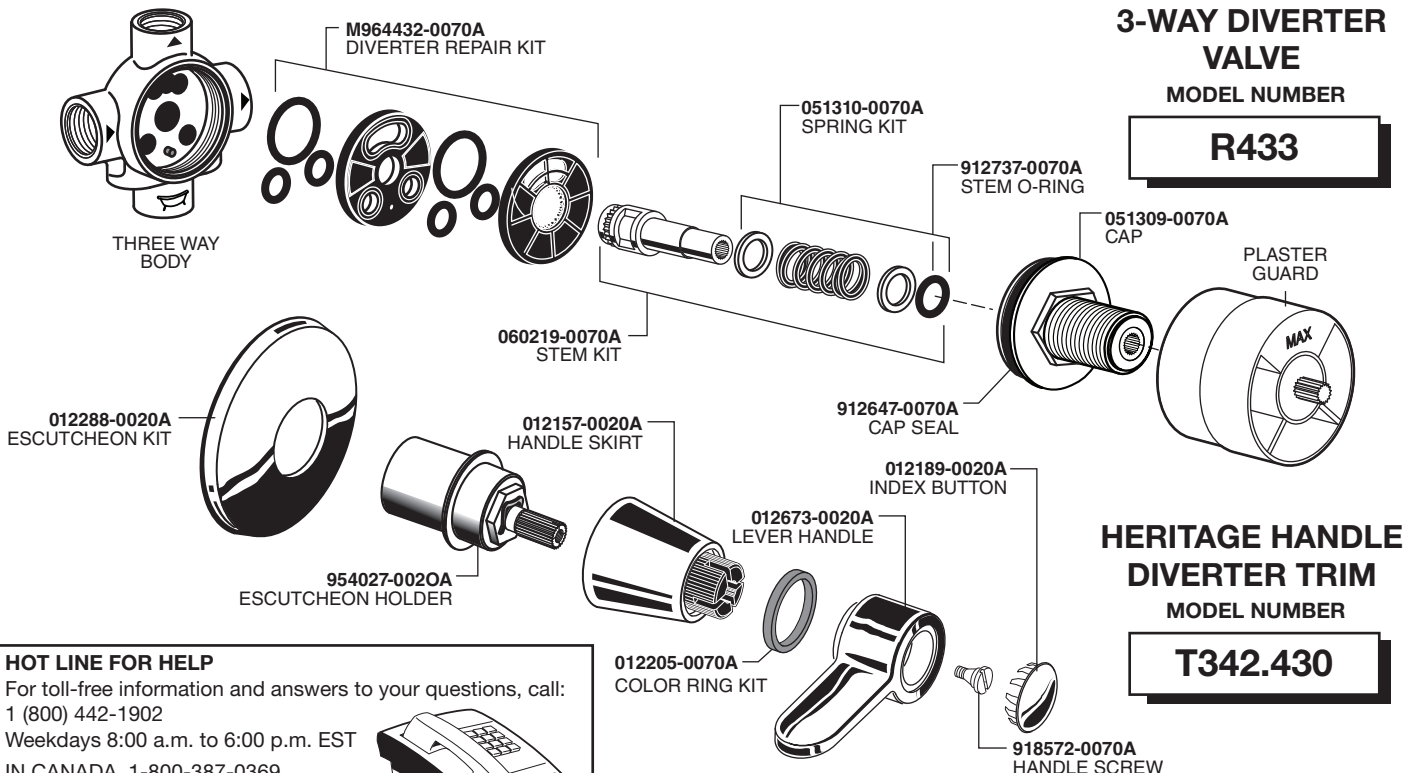
MODEL NUMBER

8888.056

3-WAY DIVERTER VALVE

MODEL NUMBER

R433



HERITAGE HANDLE DIVERTER TRIM

MODEL NUMBER

T342.430

HOT LINE FOR HELP

For toll-free information and answers to your questions, call:

1 (800) 442-1902

Weekdays 8:00 a.m. to 6:00 p.m. EST

IN CANADA 1-800-387-0369

(TORONTO 1-905-306-1093)

Weekdays 8:00 a.m. to 7:00 p.m. EST

IN MEXICO 01-800-839-1200



PART OF **LIXIL**

American Standard

FIXED HAND SHOWER
PART NUMBER

1660.505.002

1660505.002
HAND SHOWER



3-FUNCTION HAND SHOWER
PART NUMBER

1660.502.002

1660502.002
3-FUNCTION
HAND SHOWER

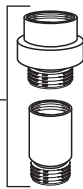
WALL SUPPLY
PART NUMBER

8888.037.002

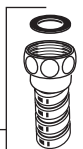
8888037.002
WALL SUPPLY



M962520-0020A
CHECK VALVE

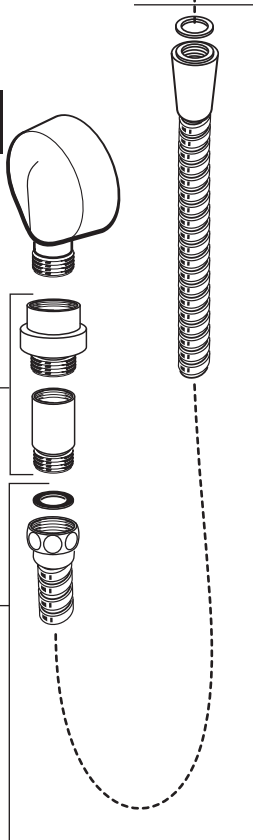


030782-0020A
HOSE KIT

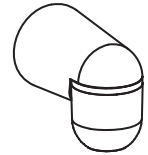


METAL HOSE
PART NUMBER

8888.035.002



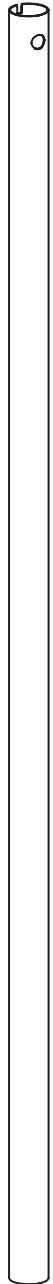
M962506-0020A
SUPPORT BRACKET



36" SLIDE BAR
PART NUMBER

1660.236.002

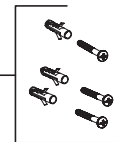
M919211-0020A
36" SLIDE BAR



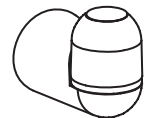
M962507-0020A
HAND SHOWER HOLDER



M950105-0070A
HARDWARE KIT



M962506-0020A
SUPPORT BRACKET



HOT LINE FOR HELP

For toll-free information and answers to your questions, call:
1 (800) 442-1902

Weekdays 8:00 a.m. to 6:00 p.m. EST

IN CANADA 1-800-387-0369

(TORONTO 1-905-306-1093)

Weekdays 8:00 a.m. to 7:00 p.m. EST

IN MEXICO 01-800-839-1200



PART OF **LIXIL**