

**TOWN SQUARE® RIGHT HEIGHT™  
ELONGATED ONE-PIECE TOILET**

**2847.016**

- Vitreous china
- **LXP (Luxury Performance) Toilet**
- Low-consumption (6.0 Lpf/1.6 gpf)
- Elongated siphon action bowl with smooth-sided, concealed trapway
- PowerWash™ rim scrubs bowl with each flush
- 16-1/2" rim height for accessible applications
- Fully glazed 2" trapway
- Oversized 3" flush valve with chemically resistant flapper
- Classic American traditional styling
- Chrome trip lever matched to Town Square® faucets
- 2 Color-matched bolt hole covers
- Includes design matched Duroplast Slow Close Toilet Seat and cover with easy lift-off feature for simple removal and reattachment for cleaning
- 100% factory flush tested
- **Coordinates with Town Square® Suite of fixtures and faucets**
- 10 year warranty on entire toilet



**Nominal Dimensions:**

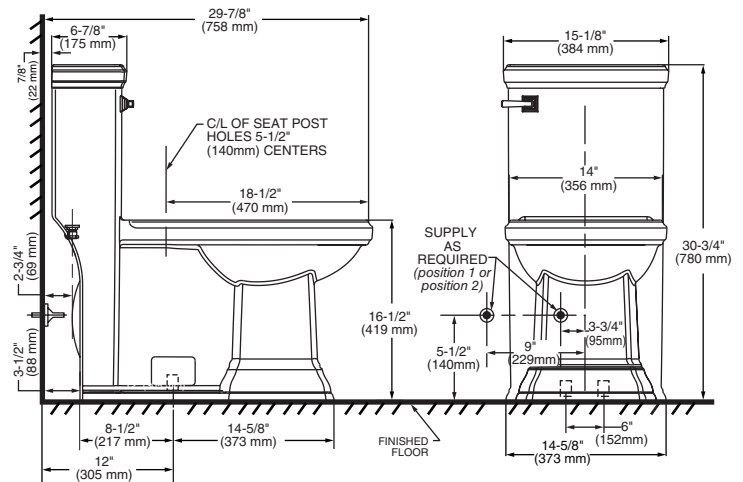
758 x 384 x 780mm  
(29-7/8" x 15-1/8" x 30-3/4")

Fixture only, supply by others

**Compliance Certifications -**

**Meets or Exceeds the Following Specifications:**

- ASME A112.19.2-2008 / CSA B45.1-08
- Los Angeles Department of Water and Power Supplementary Purchase Specification For Non-Adjustability



**IMPORTANT:** Water supply on the wall is required at 3-3/4" or 9" from centerline of the toilet (see rough-in). First suggested position is hidden behind the toilet. The geometry of the toilet gives space for this installation. The second suggested position is next to the toilet. Between these two positions, the space for the supply between wall and toilet is limited to 3-1/4". In this case, check your supply and hose dimensions.

**To Be Specified:**

- Color:
  - White
  - Bone
  - Linen
- Supply with Stop:

**NOTES:**

THIS TOILET IS DESIGNED TO ROUGH-IN AT A MINIMUM DIMENSION OF 305MM (12") FROM FINISHED WALL TO C/L OF OUTLET. SUPPLY NOT INCLUDED WITH FIXTURE AND MUST BE ORDERED SEPARATELY.  
\* DIMENSION SHOWN FOR LOCATION OF SUPPLY IS SUGGESTED.

**IMPORTANT:** Dimensions of fixtures are nominal and may vary within the range of tolerance established by ANSI Standard A112.19.2. These measurements are subject to change or cancellation. No responsibility is assumed for use of superseded or voided pages.



**MEETS THE AMERICANS WITH DISABILITIES ACT GUIDELINES AND ANSI A117.1 REQUIREMENTS FOR ACCESSIBLE AND USABLE BUILDING FACILITIES-CHECK LOCAL CODES.**