

**CHAMPION® 4 RIGHT HEIGHT™  
ELONGATED TOILET**

- 2002.014**
  - Vitreous china
  - Permanent EverClean™ anti-microbial surface
  - Features **Champion® 4 Flushing System** performance platform
  - Low-consumption (6.0 Lpf/1.6 gpf)
  - 4" non-adjustable, piston action Accelerator™ flush valve
  - 16-1/2" rim height for accessible applications
  - Elongated siphon action jetted bowl
  - 2-3/8" fully-glazed trapway
  - Speed Connect™ tank/bowl coupling system
  - Chrome-plated trip lever
  - Sweeping pier on bowl
  - 100% factory flush tested
  - 2 bolt caps
  - 10 year warranty

**3225.016** Bowl

**4266.014** Tank

**Nominal Dimensions:**

772 x 464 x 825mm (30-3/8" x 18-1/4" x 32-1/2")

Fixture only, seat and supply by others

**Alternate Tank Configurations Available:**

- 4266.504** Tank complete with Aquaguard Liner
- 4266.604** Tank complete with tank cover locking device
- 4266.804** Tank complete with trip lever located on right side
- 4266.904** Tank complete with tank cover locking device and trip lever located on right side


**Compliance Certifications -**

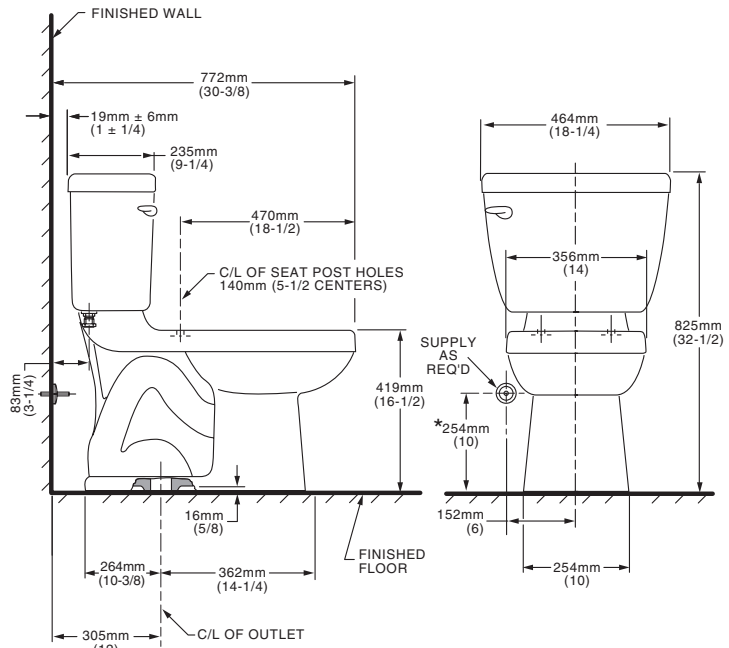
**Meets or Exceeds the Following Specifications:**

- ASME A112.19.2M for Vitreous China Fixtures - includes Flush Performance, Ball Pass Diameter, Trap Seal Depth and all Dimensions
- Los Angeles Department of Water and Power Supplementary Purchase Specification for Non-Adjustability - July, 2003 revision

**To Be Specified:**

- Color:
  - White  Bone  Silver  Linen  Black
- Design Matched Seat: #5280.016
- Alternate Seats:
  - Champion® Slow Close Elongated #5325.010
  - Rise & Shine Elongated #5324.019
  - Rise & Shine Elongated-Open Front #5325.024
  - Laurel Elongated #5311.012
- Supply with stop:

 **MEETS THE AMERICANS WITH DISABILITIES ACT GUIDELINES AND ANSI A117.1 REQUIREMENTS FOR ACCESSIBLE AND USABLE BUILDING FACILITIES-CHECK LOCAL CODES.**



**NOTES:**  
THIS TOILET IS DESIGNED TO ROUGH-IN AT A MINIMUM DIMENSION OF 305MM (12") FROM FINISHED WALL TO C/L OF OUTLET. SUPPLY NOT INCLUDED WITH FIXTURE AND MUST BE ORDERED SEPARATELY.  
\* DIMENSION SHOWN FOR LOCATION OF SUPPLY IS SUGGESTED.

**IMPORTANT:** Dimensions of fixtures are nominal and may vary within the range of tolerances established by ANSI Standard A112.19.2. These measurements are subject to change or cancellation. No responsibility is assumed for use of superseded or voided pages.

**CHAMPION® 4**  
Flushing System