

ANTIQUITY RIGHT HEIGHT™ ELONGATED ONE-PIECE TOILET WITH SEAT

□ 2907.016

- Vitreous china
- **LXP (Luxury Performance) Toilet**
- Low-consumption (6.0 Lpf/1.6 gpf)
- Space saving compact design - Elongated bowl fits in the same space as a round front toilet
- EverClean® surface inhibits the growth of stain- and odor-causing bacteria, mold, and mildew on the surface
- Featuring the **Cadet® 3 Flushing System**
- One-piece design
- Elongated siphon action jetted bowl with 2-1/8" trapway
- Internal trapway area fully glazed
- When using provided seat, an ADA height of at least 432mm (17") is achieved for accessible applications
- Includes color-matched and design-matched solid plastic toilet seat and cover with EverClean® surface.
- Oversized 3" Flush Valve with Chemical Resistant Flapper
- 10" x 8" water surface area
- 2 bolt caps
- Side-mounted Chrome Trip Lever
- 100% factory flush tested
- 10 year warranty on entire toilet
- **Classic styling coordinates with Antiquity, Retrospect, and Heritage Lavatories**

Nominal Dimensions:

744 x 457 x 696mm
(29-1/4" x 18" x 27-3/8")

Fixture only, supply by others

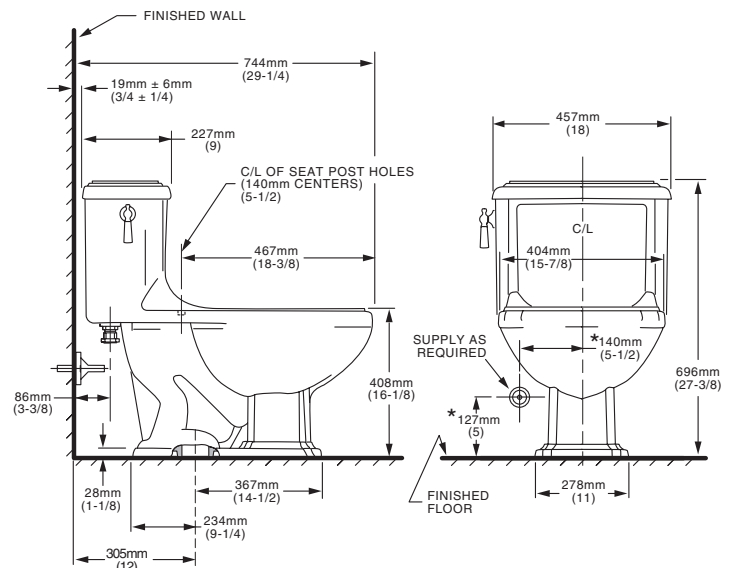
Compliance Certifications -

Meets or Exceeds the Following Specifications:

- ASME A112.19.2 - 2008/CSA B45.1-08
- Los Angeles Department of Water and Power Supplementary Purchase Specification for Non-Adjustability

To Be Specified:

- Color:
 - White
 - Bone
 - Linen
 - Silver
 - Black
- Supply with Stop:



NOTES:

THIS TOILET IS DESIGNED TO ROUGH-IN AT A MINIMUM DIMENSION OF 305MM (12") FROM FINISHED WALL TO C/L OF OUTLET. SUPPLY NOT INCLUDED WITH FIXTURE AND MUST BE ORDERED SEPARATELY.

* DIMENSION SHOWN FOR LOCATION OF SUPPLY IS SUGGESTED.

IMPORTANT: Dimensions of fixtures are nominal and may vary within the range of tolerance established by ANSI Standard A112.19.2. These measurements are subject to change or cancellation. No responsibility is assumed for use of superseded or voided pages.

CADET® 3

Flushing System



MEETS THE AMERICANS WITH DISABILITIES ACT GUIDELINES AND ANSI A117.1 REQUIREMENTS FOR ACCESSIBLE AND USABLE BUILDING FACILITIES-CHECK LOCAL CODES.