



PRODUCT FEATURES:

Optimal Performance with ICS Scrub Sink: Faucet is design matched with the American Standard ICS to minimize pooling & splashing of water.

Rigid tubular brass gooseneck spout

Laminar Flow in Spout Base prevents the mix of air & water.

Plain Spout End: Nothing is located on the end of the spout to collect lime or debris.

Flexible Selectronic Platform with programmable, multi-function sensor.

Hygienic, touch-free operation

Easy & Flexible Installation: Single post mounting with optional 4" & 8" deck plate. Water resistant solenoid enclosure mounts to wall.

Durable Vandal-Resistant Brass Body: Ideal for high-use commercial applications.

Self-Cleaning Solenoid Valve: Wiper spring prevents clogging

Easy to Service Integrated Strainer: Patented integrated strainer protects solenoid from debris. Strainer is enclosed in removable debris cup for easy service.

Optional Auto Purge Feature: Faucet can be programmed to open at a pre-determined time after the last use to purge the faucet and water lines of stagnant water.

Safety Timer: Helps prevent vandalism by turning off the faucet if the sensor is covered for 55 seconds or more. Timing is adjustable with optional remote control.

Adjustable Range: Detection zone can be adjusted manually or with optional remote control.

Fail-Safe: Faucet automatically shuts off upon loss of power or dead battery. Prevents costly excess water usage and potential flooding.

Low Lead: Faucet contains ≤ 0.25% total lead content by weighted average.

GENERAL DESCRIPTION:

Electronic faucet with proximity operation. Vandal-resistant brass construction with single post mounting. Water pressure range from 20 to 125 psi. Single inlet. Rigid gooseneck spout. 18" flexible stainless steel inlet hose with 3/8" compression fitting for connection to control box. 1.5 gpm laminar flow restrictor in spout base. Plain spout end.

MODEL NUMBER:

■ **BASE UNIT (Does not include power supply)**

- 605B.193** 1.5 gpm/5.7 L/min pressure compensating laminar flow device in the spout base. Plain spout end.

■ **POWER KITS (Must be purchased separately)**

- PK00.CRP** CR-P2 lithium battery and holder.
- PK00.WRK** PWRX™ 10-Year battery pack and holder.
- PK00.PAC** Plug-In AC power supply and Single AC adapter.
- PK00.HAC** Hard-Wired AC power supply, 10' extension cable and Single AC adapter.
- PK00.MAC** Multi-AC adapter and 10" extension cable.



■ **OPTIONAL Battery Back-Up**

- PK00.CRP** CR-P2 lithium battery and holder.
- PK00.WRK** PWRX 10-Year battery pack and holder.
- PK00.BBU** Allows faucet to continuously operate during a power failure.

■ **OPTIONAL 4" or 8" Deck plates**

- 605P.400** 4" brass deck plate with 1/4" fixation studs and quick spin nuts. (6-1/8"x 2-1/8"x 1/2")
- 605P.800** 8" brass deck plate with 1/4" fixation studs and quick spin nuts. (10-1/8"x2-3/8"x1/2")

■ **OPTIONAL Mixing Valve**

- 605XTMV1070** Thermostatic mixing valve. 20" flexible stainless steel inlet hoses with 3/8" compression fittings. ASSE 1070 certified down to 0.35 gpm/1.3 L/min.

■ **OPTIONAL Remote Control**

- 605XRCT** Adjusts setup parameters and allows for customization of functions. Can be used to program all Selectronic faucets and flush valves.

POWER OPTIONS:

- **Plug-In AC:** UL 1310, Class 2 certified. 6' long power cord. 100 - 240 VAC, 50/60 HZ.
- **Hard-Wired AC:** UL 1310, Class 2 certified. 2-piece plate-mounted power supply (electrical box by others). 120 VAC, 60 HZ.
- **Multi-AC:** One AC transformer can power up to 15 faucets and/or flush valves in a daisy chain configuration. **POWER SUPPLY NOT INCLUDED.**
- **PWRX™ 10 Year Battery System:** Battery Life - 480,000 cycles (10 years @ 4,000 cycles per month).
- **DC (Battery):** Includes CR-P2 lithium battery. Battery Life - 192,000 cycles (4 years @ 4,000 cycles per month).

RECOMMENDED SPECIFICATION:

Electronic, sensor-operated lavatory faucet shall feature a programmable, multi-function sensor and an electronically operated self-cleaning solenoid valve. Shall also feature a vandal resistant all brass body with single inlet and in-line strainer. Rigid gooseneck spout with laminar flow control device in the base of the spout and plain spout end. Shall meet ANSI A112.18.1 and ANSI 117.1 codes. Fitting shall be American Standard Model # 605B_193.

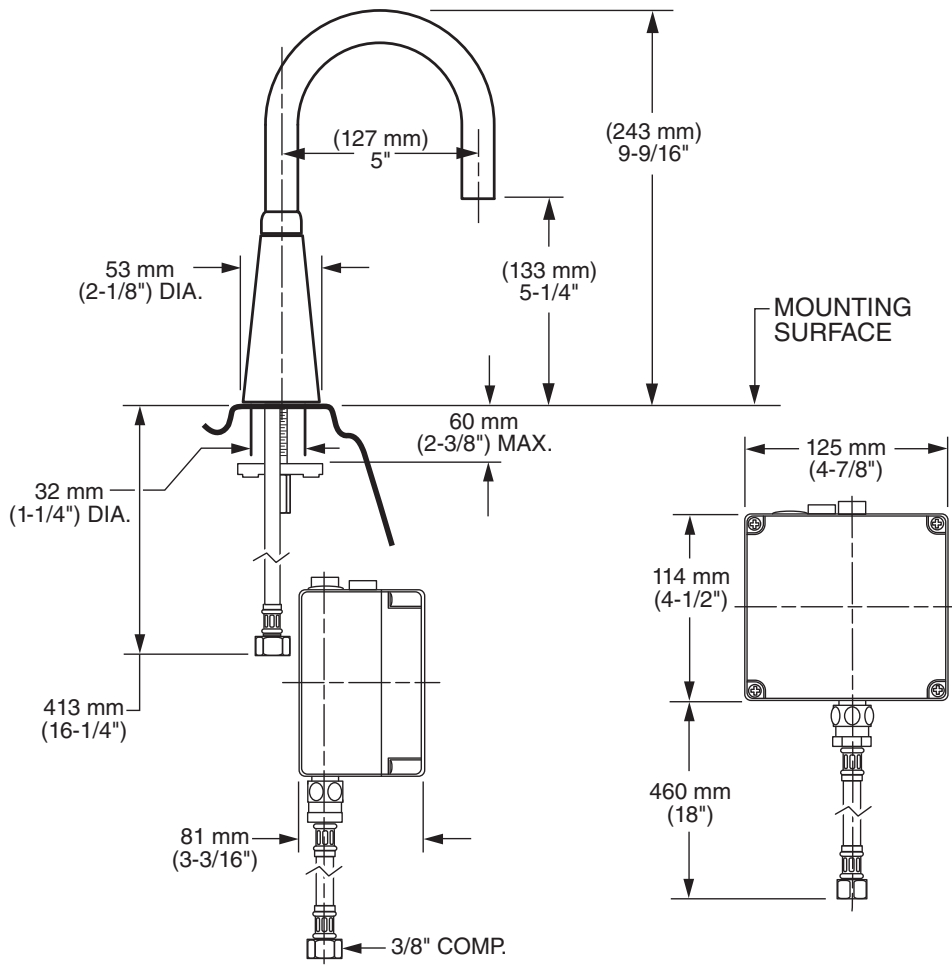
CODES AND STANDARDS

These products meet or exceed the following codes and standards:

- ANSI A117.1
- ASME A112.18.1
- CSA B125.1
- NSF 372

Other Aerators Available:	
Part Suffix	Description
LV10	1.0 gpm/3.8 L/min PCA Vandal-Resistant Non-Aerated Laminar Flow Outlet
L22	2.2 gpm/8.3 L/min PCA Vandal-Resistant Non-Aerated Laminar Flow Outlet

*PCA - PRESSURE COMPENSATING



ADA Meets the American Disabilities Act Guidelines and ANSI A117.1 Requirements for accessible and usable building facilities - check local codes

PART OF LIXIL