

**MADERA™ 15" HEIGHT 1.6 GPF
FLUSHOMETER TOILET SYSTEM with EVERCLEAN®**

- ❑ **2855.016** 1.6 gpf 15" Height Top Spud Bowl and Manual Flush Valve

BOWL:

- Floor mount elongated flushometer valve toilet
- Vitreous china
- High Efficiency, Low Consumption. Operates in the range of 1.1 gpf to 1.6 gpf (4.2 Lpf to 6.0 Lpf)
- Meets definition of HET (High Efficiency Toilet) when used with a high efficiency flush valve (1.28 gpf or 1.6 / 1.1 gpf Dual Flush)
- Permanent EverClean® surface inhibits the growth of stain- and odor-causing bacteria, mold, and mildew on the surface
- Fully glazed 2-1/8" trapway
- 10" or 12" roughing-in
- 15" rim height
- Condensation channel
- Powerful direct-fed siphon jet action
- 10" x 12" water surface area
- 1-1/2" inlet spud
- 100% factory flush tested
- Less toilet seat
- Model 3451.001

MANUAL FLUSH VALVE:

- Self-cleaning brass piston with integral wiper spring prevents clogging and reduces maintenance
- Piston operation delivers superior flush accuracy and repeatability
- Piston valve remains closed and does not need to be reset after loss of water pressure
- Non-hold open handle
- Positive seal ensures leak-free performance
- No external volume adjustment
- Durable chrome-plated cast brass construction is ideal for commercial applications
- Chloramine-resistant EPDM seals
- Adjustable tailpiece for rough-in flexibility
- Can be installed left or right hand
- Model 6047.161 for 11-1/2" supply C\I to top of bowl, 1.6 gpf with 1-1/2" top spud

Includes:

- 047007-0070A Inlet Spud (furnished with bowl)
- 481310-100 2 Bolt caps with retainers (furnished with bowl)
- 1" I.P.S. angle stop with back-flow prevention and vandal-resistant cap
- Sweat solder kit including cover tube and wall flange
- High back pressure vacuum breaker with down tube
- Spud coupling & flange for 1-1/2" top spud

To Be Specified:

- ❑ Color: ❑ White
- ❑ Seat:
 - ❑ American Standard #5901.100 Heavy duty open front less cover
 - ❑ American Standard #5905.100 Extra heavy duty open front less cover



SEE REVERSE FOR ROUGHING-IN DIMENSIONS

System MaP* Score:

- 1,000 grams of miso @ 1.6 gpf

* Maximum Performance (MaP) testing performed by IAPMO R&T Lab. MaP Report conducted by Veritec Consulting, Inc. and Koeller and Company.

Operating Pressure:

Overall Range: 20-125 psi**

Recommended: 25 psi (flowing)-80 psi (static)

** Water pressure over 80 psi is not recommended for most plumbing fixtures.

Flow Requirement:

25gpm (94.6 L/min.)

Nominal Fixture Dimensions:

718 x 356 x 381mm (28-1/4" x 14" x 15")

Fixture Compliance Certifications -

Meets or Exceeds the Following Specifications:

- ASME A112.19.2-2008 / CSA B45.1-08 for Vitreous China Fixtures

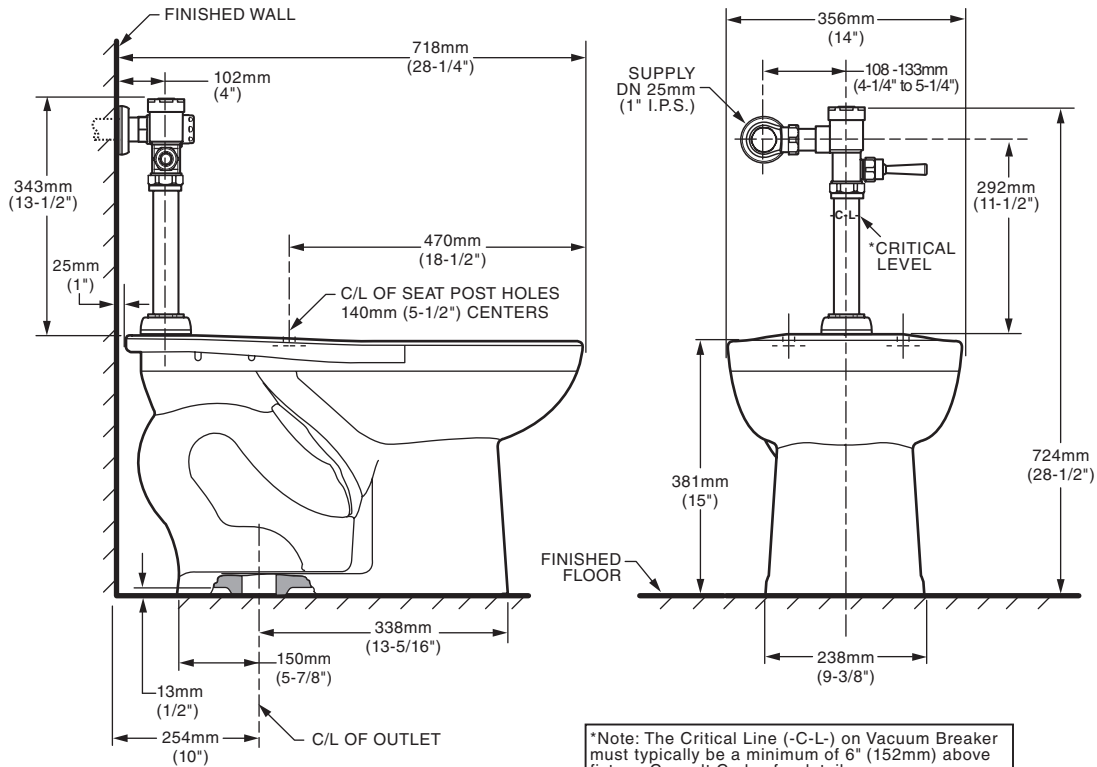
Valve Listings:

- ASSE 1037
- ANSI/ASME A112.19.2
- ADA Compliant

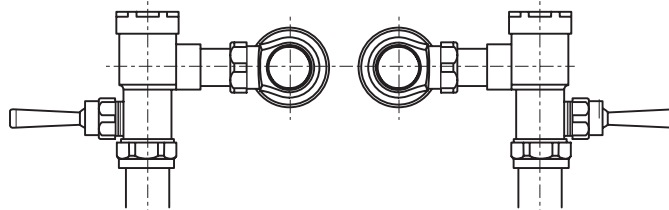
EVERCLEAN®
Surface

MADERA™ 15" HEIGHT 1.6 GPF FLUSHOMETER TOILET SYSTEM

with EVERCLEAN®
MANUAL FLUSH VALVE



*Note: The Critical Line (-C-L-) on Vacuum Breaker must typically be a minimum of 6" (152mm) above fixture. Consult Codes for details.



Valve Left or Right Hand Installation

NOTES:

TO COMPLY WITH AREA CODE GOVERNING THE HEIGHT OF VACUUM BREAKER ON THE FLUSHOMETER VALVE, THE PLUMBER MUST VERIFY DIMENSIONS SHOWN FOR SUPPLY ROUGHING. THIS TOILET DESIGNED TO ROUGH-IN AT A MINIMUM DIMENSION OF 254MM (10") AND A MAXIMUM DIMENSION OF 305MM (12") FROM FINISHED WALL TO C/L OF OUTLET.

IMPORTANT: Dimensions of fixtures are nominal and may vary within the range of tolerances established by ANSI Standard A112.19.2. These measurements are subject to change or cancellation. No responsibility is assumed for use of superseded or voided pages.

COMMERCIAL TOILET SEATS

- Open front toilet seat less cover
- Injection molded solid polypropylene
- Fits elongated bowl
- Features large molded-in bumpers
- External check hinge with 304 Series stainless steel hinge posts stops seat 11° beyond vertical
- Our new EverClean® surface inhibits the growth of stain- and odor-causing bacteria, mold, and mildew on the surface. EverClean® surface does not protect against disease causing bacteria, viruses, germs or other disease causing organisms.

- 5901.100** Elongated Heavy Duty bowl open front seat less cover
- 5901.110** Same as 5901.100 with EverClean® Surface

- 5905.100** Elongated Extra Heavy Duty bowl open front seat less cover
- 5905.110** Same as 5905.100 with EverClean® Surface

To Be Specified:

- Color: White

- 5910.100** Elongated Extra Heavy Duty Plus bowl open front seat less cover
- 5910.110** Same as 5910.100 with EverClean® Surface

To Be Specified:

- Color: White Linen Bone Silver
 Fawn Beige Black

SEE REVERSE FOR ROUGHING-IN DIMENSIONS



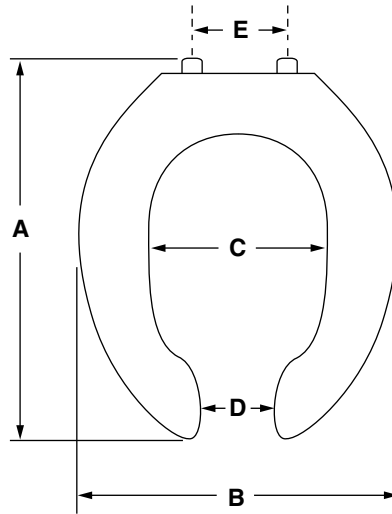
5901



5905



5910



Model #	5901	5905	5910
A	18-9/16" (471mm)	18-9/16" (471mm)	18-3/16" (462mm)
B	14-3/8" (365mm)	14-3/16" (360mm)	14-3/16" (360mm)
C	7-7/8" (200mm)	7-5/8" (194mm)	7-7/8" (200mm)
D	3-1/2" (89mm)	3" (76mm)	3-1/2" (89mm)
E	5-1/2" (140mm)	5-1/2" (140mm)	5-1/2" (140mm)
Ring Thickness	7/8" (22mm)	1" (25mm)	1" (25mm)
Ring Thickness with Bumper	1" (25mm)	1-1/8" (29mm)	1-1/8" (29mm)