

## ONE YEAR WARRANTY

Electrocorp units in this series are covered by one-year warranty against defects in materials and workmanship for a period of one year from the date of purchase. **Warranties are limited to the original purchaser and are thus non-transferrable.**

Units must be shipped back to Electrocorp in their original packaging. Clients are responsible for insuring packages with carriers such as UPS.

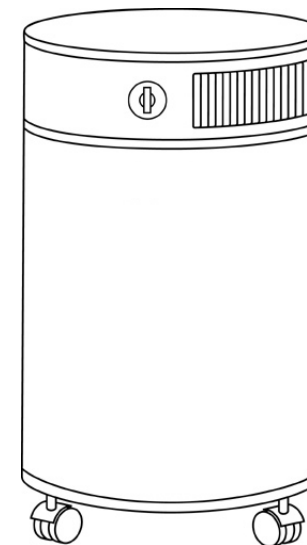
The warranty does not cover expendable parts such as filters and pre-filters.

Electrocorp is not liable for any consequential damages for breach of this or any other warranty expressed or implied whatsoever.

One year parts and labor.

Electrocorp top quality air purification machines are distributed worldwide for commercial, residential, institutional and industrial use. The units employ cutting-edge technology, and are built according to the highest standards required for health and safety.

## Operation and Maintenance Manual



**8000 Series  
Air Purifiers**  
**A8PK7025**

Model # \_\_\_\_\_

Serial # \_\_\_\_\_

**Congratulations!** *You're moments away from fresher, cleaner indoor air.* Your new **Electrocorp** unit will combat many of the chemicals, gases, odors and particles responsible for poor indoor air quality (IAQ). Poor IAQ may cause or worsen allergies, asthma, multiple chemical sensitivities (MCS) and sick building syndrome. We recommend proper maintenance of your unit to keep it running efficiently for years to come.

### Operation:

All 8000 Series models are shipped unassembled due to the weight factor of the filters. Owners may refer to their additional instruction sheet for filter installation, or refer to Page 3 of this booklet.)

**NOTE:** As original packaging is required for warranty returns, new Electrocorp owners are advised to keep boxes and shipping materials.

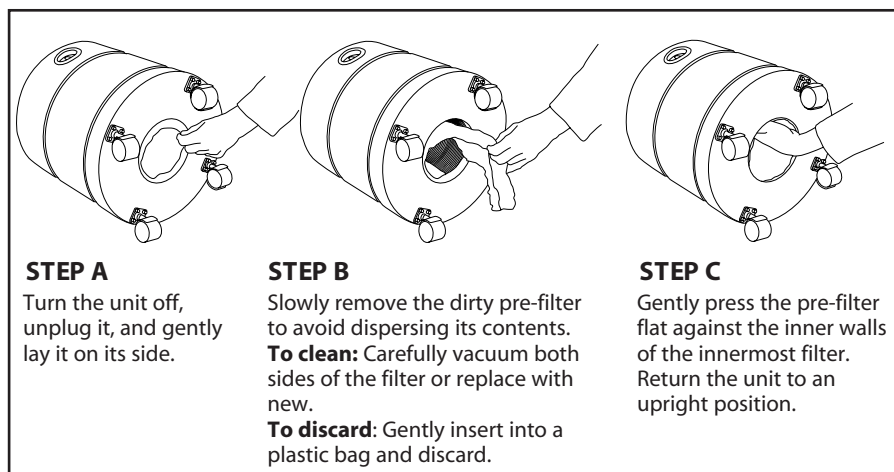
## GETTING STARTED

- Keep packaging in case of warranty returns
- Filters are shipped in a separate box, and must be installed prior to use. Refer to Page 3.
- Wipe the unit with a soft damp cloth to remove dust accumulated during shipping
- Check the inlet opening for extra prefilters if ordered
- Lay the unit on its casters and plug it into a 120-volt outlet with ground
- Run the unit on TURBO for a few minutes to re-adjust the airflow patterns in the room
- Depending on interior conditions, you may choose to run the unit on HIGH during the day and on LOW at night\*
- Running the unit on LOW is energy-efficient and increases the amount of air dwell time in the cleansing chambers

\* Depending on interior dust conditions. But for chemical, smoke or VOC odors we suggest operating on the low setting to allow for the longest dwell time and adsorption.

## REPLACING OR CLEANING THE PRE-FILTER

We recommend changing or cleaning pre-filters every one to two months.



### [ Warning ]

Refrain from poking or sticking any object into the unit's air vents

### Pre-filter Order Reference Numbers\*

To order a new pre-filter, call Electrocorp toll-free at 1-866-667-0297 during regular business hours (EST), or send an e-mail to [info@electrocorp.net](mailto:info@electrocorp.net)

Models	Prefilters	8000	8000 HEPA only
Exec. Vocarb	Poly Prefilters	A8FMP006	Prefilter A8FMPH18
DS Models	Tacky Prefilters		
MCS Models	Cotton Prefilters		

\*Please use the above part numbers when ordering your replacement parts

## THE ELECTROCORP AIR FILTRATION SYSTEM

### ACTIVATED CARBON

Your Electrocorp air purifier contains activated carbon that permanently traps dangerous airborne chemicals, gases and odors. This vital filter should be changed approximately every two to three years, depending on the environment in which the unit is operating. You can also upgrade your Exec, Vocarb or D unit at any time to accommodate a larger and deeper carbon filter suitable for removing heavier concentrations of chemicals, gases and odors.

### PRE-FILTER

The pre-filter included with your unit removes larger particles and helps prolong the life of your HEPA filter. The pre-filter should be vacuumed or replaced every three months.

### LASER TESTED, MEDICAL-GRADE HEPA\*

HEPA or high-efficiency particulate air filters were originally developed by the military to remove radio-active dust, and are now the primary particle filtration systems used in hospitals, laboratories, electronic clean rooms and any application where clean air is critical. Today, HEPA filters are widely recommended by allergists, doctors and indoor air quality experts for home and office. They trap an amazing 99.97% of airborne particles at 0.3 microns, including dust, hair, pollen and even some bacteria and viruses.

Depending on the particle level in the environment in which the unit is used, your HEPA filter should be replaced every three to five years.

\* Note that chemical and odor models D and DX feature a micro-particle filter which is rated to trap at least 95% airborne particles.

### THE ELECTROCORP ADVANTAGE

- Our units offer complete air filtration removing airborne chemicals, gases, odors and particles.
- Our deep bed, activated carbon filters last longer than the average thin filter which is generally carbon sprayed onto a synthetic material.
- Our units do not use dangerous ozone technology
- Our units are manufactured to clean your air and therefore are not made with a plastic housing, or other materials which may off-gas chemicals.
- Our units are powered by American-made motors that are energy efficient and cost only pennies a day to operate.

## IMPORTANT NOTICE

### PLANNING ON PAINTING YOUR HOME? READ THIS FIRST:

Particles from paint may clog your HEPA filter, therefore we recommended that users unplug their units and remove the HEPA filter, storing it off-site until the paint job is complete. Due to the serious toxic nature of paint it is also recommended that your carbon filter be replaced or refilled in the weeks after the paint job is complete.

## REPLACING UV BULB AND BALLAST

**NOTE: BEFORE PERFORMING ANY SERVICE ALWAYS UNPLUG UNIT FROM POWER SOURCE.**

**Step 1**  
Turn the unit off and unplug it. Gently turn it over and lay it upside down.

**Step 2**  
Using a #2 Philips screwdriver, remove the four screws that hold the base onto the unit.

**Step 3**  
Gently grasp the wheels, and remove the lid by pulling gently.

**Step 4**  
Remove the felt pad.

**Carbon Filters**  
Remove the filter(s) according to the indicated directions.

**HEPA Filters**

**Step 6**  
Remove the three screws in the filter end plate, and remove the end plate.

**7A**  
**4 pin socket**

**7B**  
**Wing Nut**

**7A**  
**Nylon wrap**

**7B**  
**4 pin socket**

**8**

**Step 7 For a 10-watt Bulb:**

**A.** Unplug the four-pin socket from the bulb.

**B.** Loosen the wing nut that holds the bulb in place.

**C.** Carefully remove the bulb.

**Step 7 For a 20-watt Bulb:**

**A.** Carefully cut the band of nylon that holds the UV bulb in place.

**B.** Unplug the four-pin socket.

**C.** Carefully remove the bulb.

**Step 8**  
Place the new bulb in the holder. Make sure it is horizontal. Make sure it is not touching any of the other components, and tighten the wing nut.

**Step 9**  
Replace the four-pin socket.

### Notes:

Replace the filter end plate.  
Replace the screws, filter(s) and bottom with the 4 screws.

## REPLACING HEPA AND/OR CARBON FILTERS

**STEP 1**  
Make sure the unit is set to "off" and the unit is **unplugged**. Lay the unit upside down, so that the wheels face up.

**STEP 4**  
Reach inside the unit, and remove felt pad.

**STEP 7**  
Now, **replace** the new HEPA filter into the unit.

**STEP 10**  
Replace the base, making sure the arrow on the gold sticker lines up with unit's rear seam.

**STEP 2**  
Using a #2 Philips screwdriver, remove the four screws that hold the base onto the unit.

**STEP 5**  
First, **remove** the carbon filter. (pull up gently by placing thumbs on the inner side of the filter)

**STEP 8**  
Then, **replace** the new carbon filter into the unit.  
*See page 5 for instructions on replacing carbon filling.*

**Step 11**  
Replace the four screws.

**STEP 3**  
Grasp the wheels. Remove the base by pulling gently on the wheels

**STEP 6**  
Then, **remove** the HEPA filter with the same technique.

**Step 9**  
Put back the felt pad removed in **STEP 4**.

**Step 12**  
Turn the unit back onto its wheels. It is now ready for use.

## HEPA & CARBON FILTERS ORDER GUIDE

These replacement filters will extend the life of your Electrocorp unit. Please be sure to follow the instructions for changing the filters in your unit.

We recommend changing pre-filters every two months, HEPA filters every three to five years, and carbon filters every two years.

### Order Reference Numbers

Please use the numbers in the chart when placing your order.  
Call Electrocorp at 1-866-667-0297 during regular business hours (EST)  
or send an e-mail to [info@electrocorp.net](mailto:info@electrocorp.net)

#### HEPA Filter Order Guide

Models	8000
Exec, Vocarb	A8FH0411

**NOTE:** Please use the above part numbers when ordering your replacement parts

#### Microparticulate Electrostatic Filter Order Guide

Models	8000
D Models	A8FMR002
DX Models	
DS Models	

**NOTE:** Please use the above part numbers when ordering your replacement parts  
This is the filter that wraps around any D, DX, DS or MCS carbon filter.

#### Replacement Carbon Filter Order Guide\*

Models	8000
Exec Models 2.5"***	A8FCB325
Vocarb Models 2.5"***	A8FCB225
D Exec Models 3"	A8FCB330
D Vocarb Models 3"	A8FCB230
DX Exec Models 3.5"	A8FCB335
DX Vocarb Models 3.5"	A8FCB235
DS Models 3"	

\*Please use the above part numbers when ordering your replacement parts.  
If you have ordered a special blend of carbon in the past please let us know about it when ordering the replacement

\*\*Please refer to your carbon filter depth when ordering a replacement

## REFILING THE CARBON CANISTER

Your Electrocorp unit contains two filters. The carbon filter is the smaller, innermost one.

### Tools required:

Philips screwdriver, garbage bag large enough to hold all of the old carbon, rubber mallet.

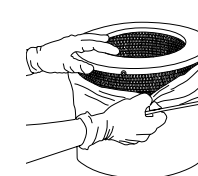
**\* Please note that this is a messy, dust-producing job, so select attire and site for the task accordingly.**  
Electrocorp makes a special funnel to evenly refill carbon filters.

Call 1-866-667-0297 during regular business hours (EST) or e-mail to order.



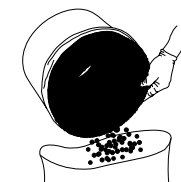
#### STEP 1

Remove the carbon filter from the unit by pressing thumbs against the inner rim and pulling up.



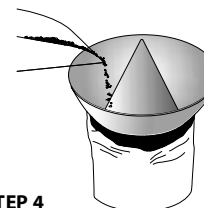
#### STEP 2

Gently pull back the pre-filter to access the four screws at the top of the filter. Remove the screws with a Philips screwdriver and take off the lid of the filter.



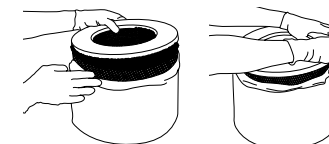
#### STEP 3

Discard all of the old carbon. Pour it into a garbage bag of adequate size and tie the bag shut.



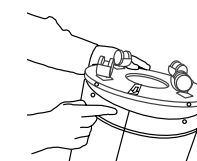
#### STEP 4

Pour in the new carbon, using a funnel if desired. As you pour, tap the sides of the filter with the rubber mallet to help settle the carbon granules.



#### STEP 5

When the filter is full, replace the lid and its screws. Adjust the pre-filter, and gently slide the filter back into the unit.



#### STEP 6

Replace the felt gasket. Replace the base of the unit. Align the arrow on the base's gold sticker with the unit's seam, and replace the four screws with a Philips screwdriver.

### Order Reference Numbers

#### Empty Carbon Canisters Order Guide\*

Models	8000	Notes
2.5" Canister**	A8FC1501	Exec and Vocarb models
D Models	A8FC0503	
DX Models	A8FC1503	

\*Please use the above part numbers when ordering your replacement parts.

\*Please consult the Bulk Carbon Order Guide

\*Please refer to your carbon filter depth when ordering a replacement

#### Bulk Carbon Order Guide\*

Models	4000	Notes
Exec Mix	AM000911	
Vocarb Mix	AM000912	
Tobacco Smoke Mi	AM000901	
Special Blend Mix		please call

\*Please use the above part numbers when ordering your replacement parts