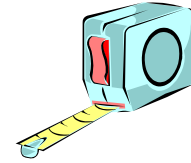


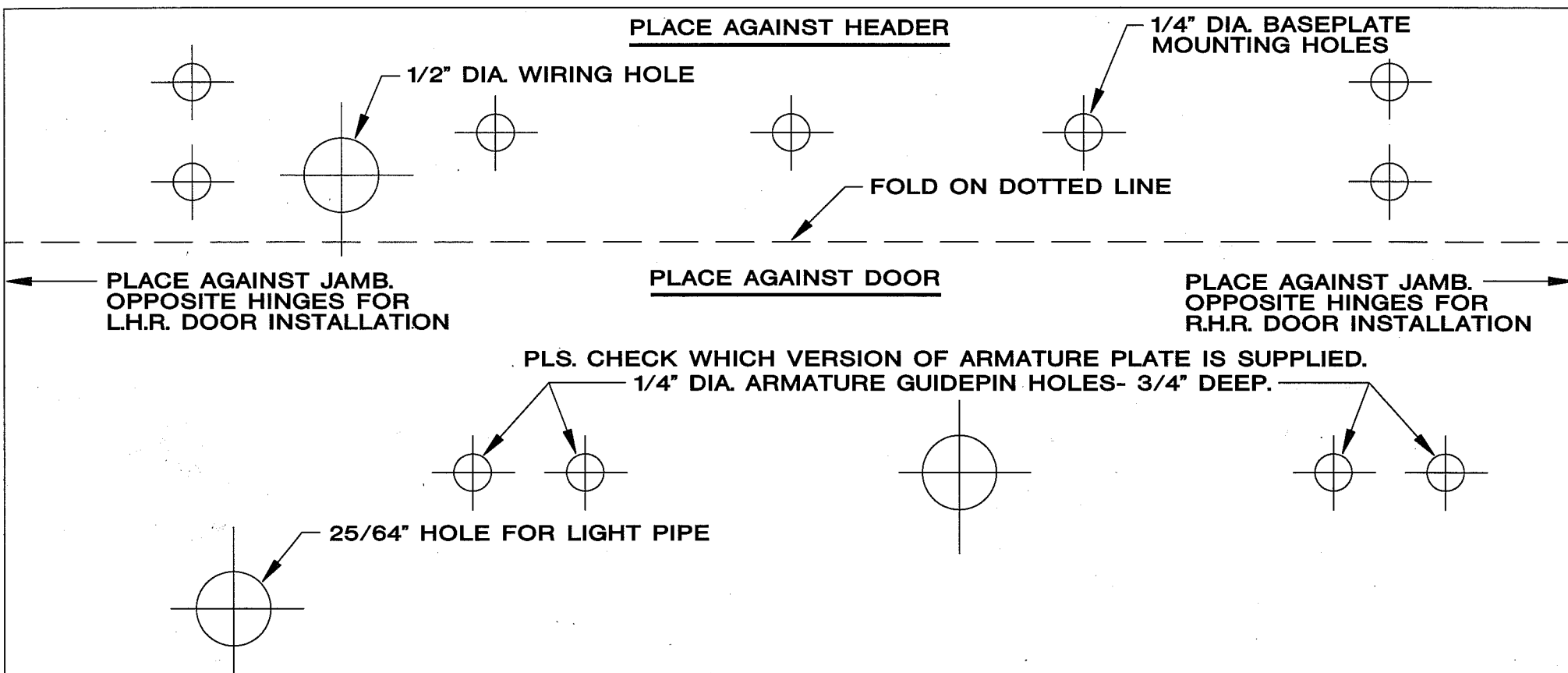


IMPORTANT



Templates must be printed without size modifications and verified for dimensional accuracy.

- Before printing, select the printing options necessary to ensure that copies are produced without size adjustments.
- After printing, measure the dimensions indicated on the template to ensure correct scale.



MOUNTING TEMPLATE FOR PM1200-SERIES

STEP 1. ARMATURE PLATE MOUNTING:

- Fold **TEMPLATE** at dotted line.
- Place bottom part of **TEMPLATE** against door.
- Drill the three holes as indicated.
- Mount the Armature to door using one (1) rubber washer between door and armature plate and tighten bolt.

STEP 2. MAGNET MOUNTING PLATE:

- Place **TEMPLATE** over Armature center hole, using **TEMPLATE** as a guide, mark header with location of 1/4 inch mounting holes.
- Refer to W11020 (RR-PM1200 PAK installation instructions) for details of mounting plate installation.

STEP 3. INSTALLING MAGNET:

- Install magnet to mounting plate.
- Install electrical wiring.