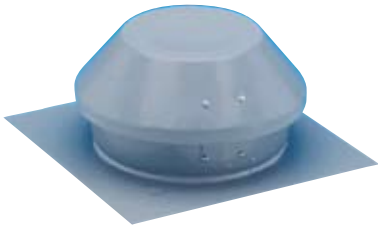


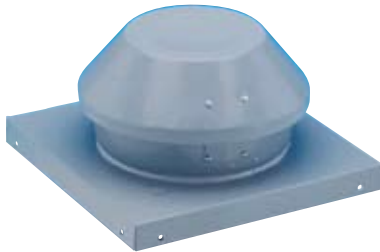


FUJIOH

Exterior-Mounted Fans



Model: 5067,5068,5069

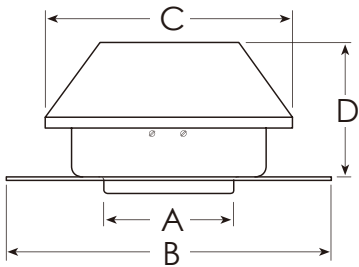


Model: 5070,5071,5072

STANDARD FEATURES

- Galvanized steel housing with baked powder coat finish
- Powered by external rotor motorized impeller
- Permanently lubricated sealed ball bearings
- 100% speed controllable
- Automatic reset thermal overload protection
- Prewired electrical box
- Three-year limited warranty

Model: 5067,5068,5069

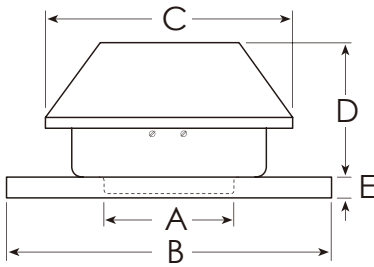


Specifications				
Model	CFM (0"wg)	Watts	Volts	Amps
5067	409	153	115	1.48 ^{*1}
5070				
5068	753	394	115	3.61 ^{*1}
5071				
5069	1008	531	115	5.12 ^{*2}
5072				

*1. Recommended speed control rating 5A.

*2. Recommended speed control rating 7.5/10A.

Model: 5070,5071,5072



Model	A	B	C	D	E	Metal Gauge	Wt. (lbs)
5067	7 7/8	20	15 3/4	6	—	22	19
5070					1 1/2		
5068	9 7/8	20	19 3/4	11 3/4	—		31
5071					1 1/2		
5069	9 7/8	20	19 3/4	12 11/16	—		
5072					1 1/2		

All dimensions in inches

Accessories for 5067,5070	Model
<input type="checkbox"/> φ8" Mounting Clamp	5075
<input type="checkbox"/> Reducers (φ 10" to φ8")	5079

Accessories for 5068,5069,5071,5072	Model
<input type="checkbox"/> φ10" Mounting Clamp	5076

Wall Switch	Model
<input type="checkbox"/> Wall Switch on/off 10Amp	5081
<input type="checkbox"/> Wall Switch on/off 5Amp	5082
<input type="checkbox"/> Wall Switch slider 5Amp	5083
<input type="checkbox"/> Wall Switch slider 7.5Amp	5084
<input type="checkbox"/>	



FUJIOH

Fuji Industrial USA, Inc.

16300 Christensen Rd, #212 Seattle, WA 98188

1-888-547-9880

www.fujioh.com