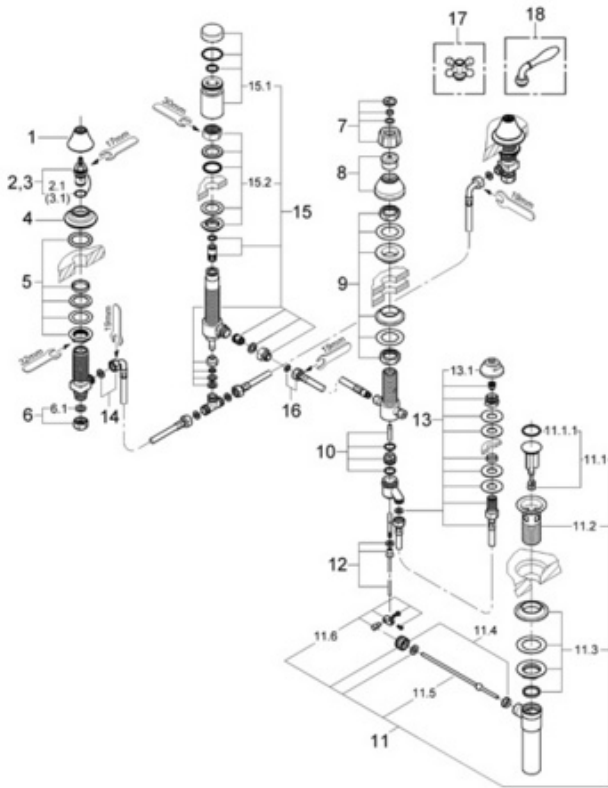


Exploded View



Parts Breakdown

Pos No.	Spare Part Description	Product No.	Pcs.
24 020			
1	Upper flange	45 907	1
2	90 degree carborundum cartridge	45 882	1
2.1	O-ring	03 924	1
3	90 degree carborundum cartridge	45 883	1
3.1	O-ring	03 924	1
4	Lower flange	45 905	1
5	Valve mounting kit	45 286	1
6	1/2" coupling nut	12 902	1
6.1	Fiber washer for relaxa hose	01 389	1
7	Diverter knob	45 709	1
8	Esc w/nut	45 686	1
9	Diverter mounting set	45 687	1
10	Diverter cone & rod	45 645	1
11	Pop-up drain	28 957	1
11.1	Chr pop-up stopper for 28 958	45 324	1
11.1.1	Stopper o-ring for 28 958	01 147	1
11.2	Chrome flange for 28 958	01 153	1
11.3	Mounting nut for 28 958	45 266	1
11.4	Ball rod nut w/bush for 28 958	45 265	1
11.5	Ball rod w/spring for 28 958	45 264	1
11.6	Toggle lever	45 485	1
12	Swivel vertical P-U rod	45 646	1
13	Vertical spray	24 210	1
13.1	Spray face plate	02 664	1
14	Noblesse wideset hose	45 704	1
14.1	Spray face plate	02 664	1
15	Vacuum breaker complete	45 852	1
15.1	Cover & tube for vacuum breaker	45 853	1
15.2	Vacuum mounting kit	45 855	1
16	Diverter connection hose	28 935	1
Special Accessories			
17	Cross handle	45 767	1
18	Lever handle	45 768	1